




WEEN

KIT CERNIERE ANTA AFFIANCATA 100KG




Kit Cerniere e braccio Ween per anta affiancata | Passive sash Ween hinge and arm | Charnières et bras pour dormant | Bisagras y compás para hoja pasiva

 Cerniere in estruso e zama, contropiastre e viti; braccio con leva, viti e grani in acciaio inox, corpo in zama.

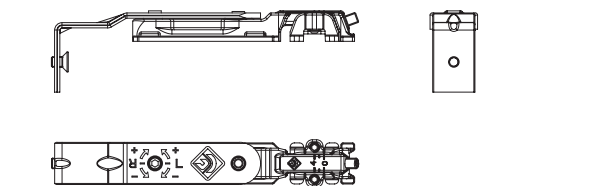
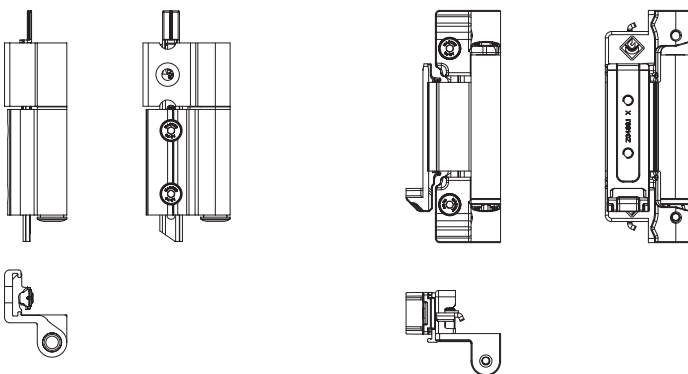
 Extruded aluminum and zamak hinges, counterplates and screws; arm lever, screws and setscrews in stainless steel, zamak body.

 Charnières en aluminium extrudé et zamak, gâches et vis; bras levier, vis et grains en acier inox, corps en zamak.

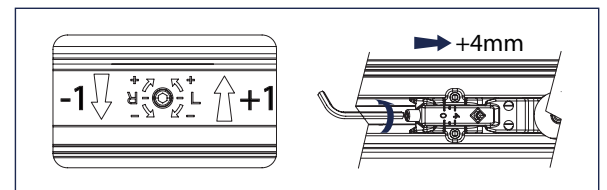
 Bisagras de aluminio extruido y zamac, cerraderos y tornillos; Compás con leva tornillos y prisioneros de acero inox, cuerpo de zamac.



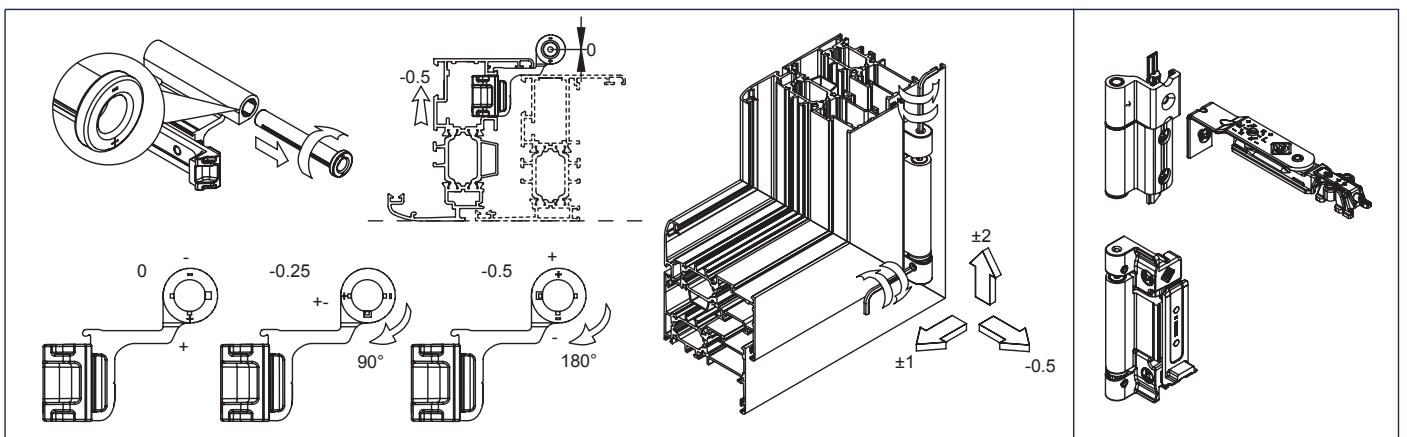
ART.	3400.23			
Imballo Package Conditionnement Embalaje	5 Pz			
Finiture disponibili Available finishes Finitions disponibles Acabados disponibles	1	2	3	4



REGOLAZIONI | ADJUSTEMENT



REGOLAZIONI | ADJUSTEMENT



ART.	NODO SECTION
3400.23	A01 - A02 - A03 - A05 - A06

Kit di conversione 100kg >>>160kg
Conversion kit 100kg >>>160kg

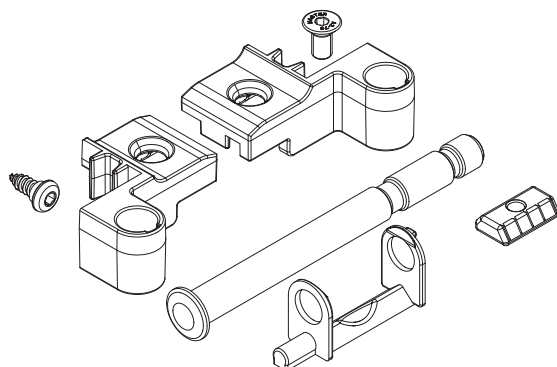


TABELLA DI CARICO | LOAD CHART

PESO MASSIMO DELL'ANTA (alluminio + vetro = 110 Kg) MAXIMUM WEIGHT OF THE SASH (aluminium + glass =110 Kg)												
Spessore max. del vetro indicato (es. 30 mm) Maximum thickness of the glass (es. 30 mm)						N.D. = Dimensione Non Disponibile N.D. = Dimension Not Available						
Nota: Lo spessore massimo del vetro impiegabile si riferisce al materiale senza la camera d'aria Note: The maximum thickness of the glass is considered without the air-space												
2700	40	37	30	25	21	19	16	15	13	12	11	11
2600	42	38	31	26	22	19	17	15	14	13	12	11
2500	43	40	32	27	23	20	18	16	15	13	12	11
2400	45	42	33	28	24	21	19	17	15	14	13	12
2300	47	43	35	29	25	22	19	17	16	14	13	12
2200	49	45	36	39	26	23	29	18	17	15	14	13
2100	50	48	38	32	27	24	21	19	17	16	15	14
2000	50	50	40	33	29	25	22	29	18	17	15	14
1900	50	50	42	35	30	26	23	21	19	18	16	15
1800	50	50	44	37	32	28	25	22	20	19	17	16
1700	50	50	47	39	34	29	26	24	21	29	18	15
1600	50	50	50	42	36	31	28	25	23	21	17	16
1500	50	50	50	44	38	33	30	27	24	22	18	17
1400	50	50	50	48	41	36	32	29	26	21	20	18
1300	50	50	50	50	44	38	34	31	25	23	21	16
1200	50	50	50	50	48	42	37	30	27	25	19	14
1100	50	50	50	50	50	45	36	33	30	23	17	16
1000	50	50	50	50	50	50	40	36	27	20	18	11
900	50	50	50	50	50	50	44	27	24	15	7	x
800	50	50	50	50	50	50	33	30	18	8	x	x
700	50	50	50	50	50	43	38	11	x	x	x	x
600	50	50	50	50	50	33	15	x	x	x	x	x
500	50	50	50	50	46	x	x	x	x	x	x	x
H L	370	400	500	600	700	800	900	1000	1100	1200	1300	1400