




WISLIDE 500 KG


Attuatore per infissi scorrevoli



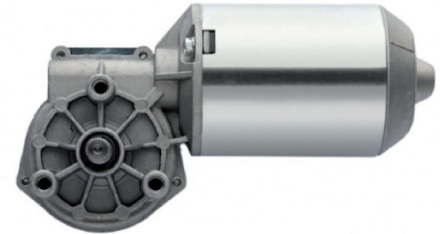
Attuatore elettrico con cinghia rotante | Electric actuator with rotating chain | Actionneur électrique avec chaîne rotant | Actuador eléctrico con correa

 Attuatore elettrico con cinghia rotante che permette di movimentare infissi scorrevoli fino a 500 kg.

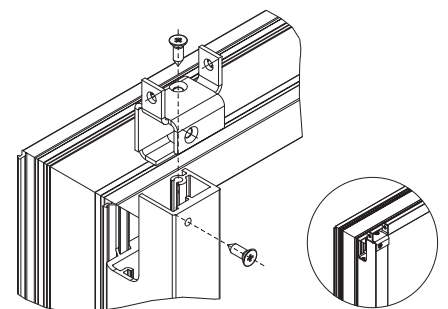
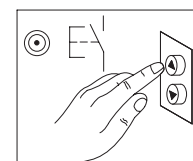
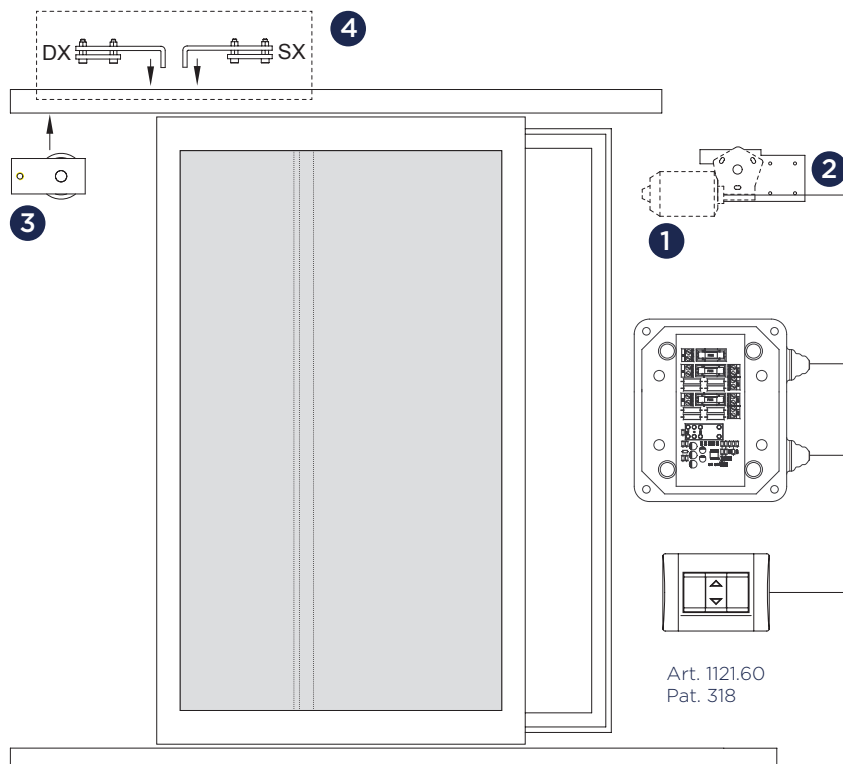
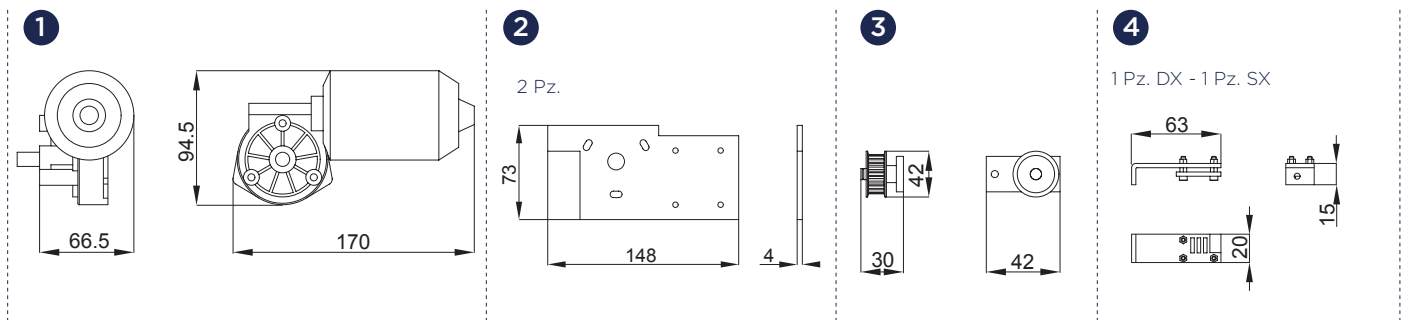
 Electric actuator with rotating chain for sliding system up to 500 Kg.

 Actionneur électrique avec chaîne rotant pour le système coulissant avec une portée maximale de 500 Kg.

 Actuador eléctrico con correa para correderas con carga máxima de 500 Kg.



ART.	1122.5			
Imballo Package Conditionnement Embalaje	1 Pz			
Finiture disponibili Available finishes Finitions disponibles Acabados disponibles	1	2	3	4



Staffa non inclusa nel kit staffe (Art. 1122.70D/S). Le dimensioni della staffa variano in funzione della tipologia di profilo utilizzato. *Bracket not included in the bracket kit (Art. 1122.70D / S). The size of the bracket may change as a function of the type of profile used.*

Dati di targa e marchitura <i>Rating e marking</i> - Art. 1122.1	
Alimentazione motore <i>Power supply</i>	24 Vdc
Peso max totale <i>Total max weight</i>	160 Kg
Luce max <i>Max Dimension</i>	300 cm
Velocità <i>Velocity</i>	10 cm/s
Potenza motore <i>Absorbed power</i>	40 W
Assorbimento medio <i>Average absorbtion</i>	0,8 A
Forza <i>Force</i>	80 N
Ciclo di lavoro <i>Duty cycle</i>	10 cicli/ora <i>10 cycle/hours</i>
Rumorosità <i>Noise level</i>	50 dB
Grado di protezione <i>Degree of protection</i>	IP56
Irreversibile <i>Irreversible</i>	Si / Yes
Elettroblocco <i>Electric lock</i>	Si / Yes

Dati di targa e marchitura <i>Rating e marking</i> - Art. 1122.5	
Alimentazione motore <i>Power supply</i>	24 Vdc
Peso max totale <i>Total max weight</i>	500 Kg
Luce max <i>Max Dimension</i>	500 cm
Velocità <i>Velocity</i>	---
Potenza motore <i>Absorbed power</i>	240 W
Assorbimento medio <i>Average absorbtion</i>	---
Forza <i>Force</i>	450 N
Ciclo di lavoro <i>Duty cycle</i>	10 cicli/ora <i>10 cycle/hours</i>
Rumorosità <i>Noise level</i>	35 dB
Grado di protezione <i>Degree of protection</i>	IP32
Irreversibile <i>Irreversible</i>	---
Elettroblocco <i>Electric lock</i>	---