



# CERNIERA A PETTINE



Cerniera a pettine | Comb hinge  
Paumelle a peigne | Bisagras de tres alas



Cerniera lato telaio in zama, lato anta in alluminio estruso, piastrine in zama, boccole e tappini in nylon, viti e perno in acciaio inox.



Frame side of hinge in zamak, shutter side in extruded aluminum, zamak plates, nylon bushings and caps, stainless steel screws and pin.



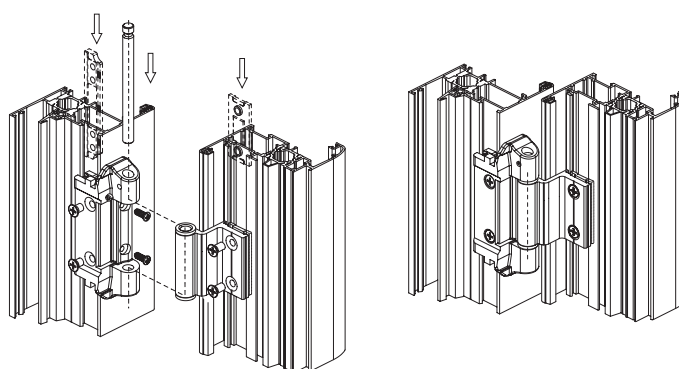
Paumelle côté dormant en zamak, côté ouvrant en aluminium extrudé, plaques en zamak, bagues et bouchons en nylon, vis et pivot en acier inox.



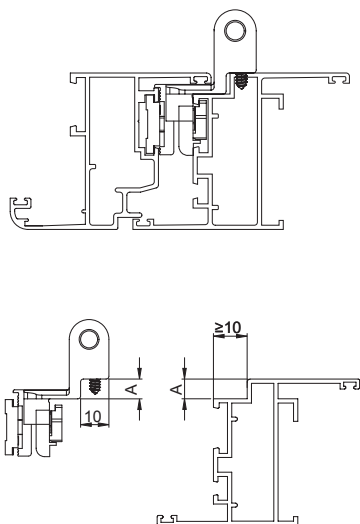
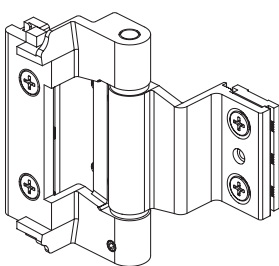
Bisagra del lado del marco de zamak, lado de la hoja de aluminio extruido, placas de zamak, casquillos y tapones de nylon, tornillos y pernio de acero inox.



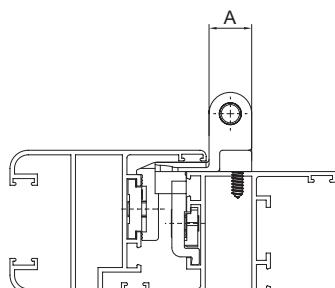
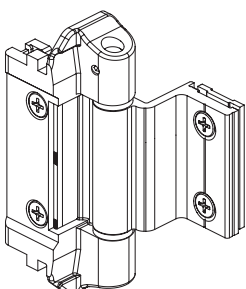
ART.	TUTTI   ALL   TOUS   TODOS				
Imballo   Package   Conditionnement   Embalaje	10 PZ				
Finiture disponibili   Available finishes Finitions disponibles   Acabados disponibles	<table border="1"> <tr> <td>1</td> <td>2</td> <td>3</td> <td>4</td> </tr> </table>	1	2	3	4
1	2	3	4		



Versione complanare interno  
Version for complanate systems



Versione con sormonto  
Version for surmount systems



Profili con sormonto

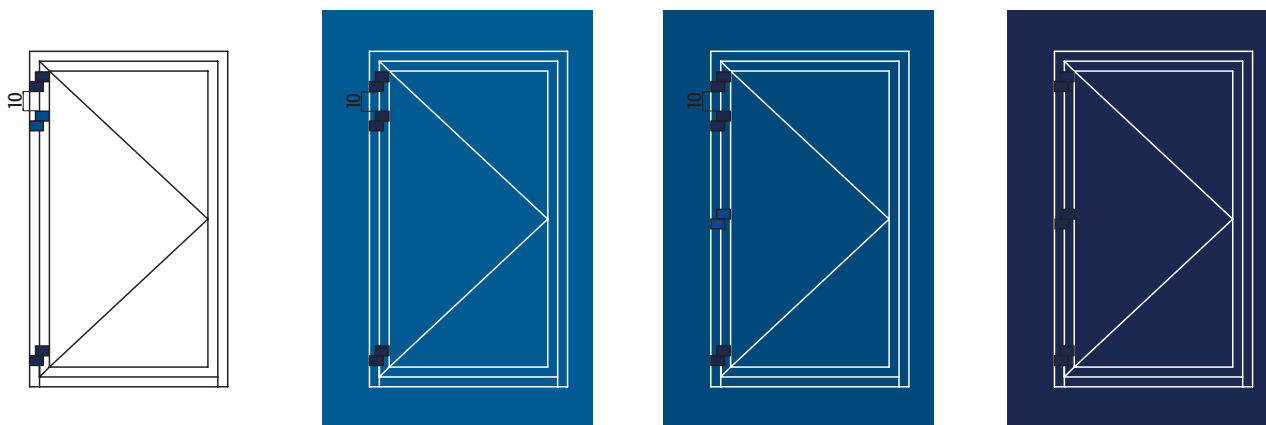
PER PROFILI CON GRADINI FOR PROFILE WITH thickness			
ART	A	PORTATA MAX. MAX LOAD.	NODO SECTION
3520.72	7	80 Kg	A20
3521.72	8		A23
3520.73	8	80 Kg	A21
3522.72			A12
3526.72	7	80 Kg	A17

PER PROFILI CON SORMONTO FOR PROFILE WITH OVERLAPPED			
ART	A	PORTATA MAX. MAX LOAD.	NODO SECTION
3523.71	15	80 Kg	A10
3526.71	16		A16

H	2800	100%	100%	100%	100%	100%	100%	100%	100%
	2700	100%	100%	100%	100%	100%	100%	100%	100%
	2600	100%	100%	100%	100%	100%	100%	100%	100%
	2500	100%	100%	100%	100%	100%	100%	100%	100%
	2400	100%	100%	100%	100%	100%	100%	100%	100%
	2300	100%	100%	100%	100%	100%	100%	100%	100%
	2200	100%	100%	100%	100%	100%	100%	100%	97%
	2100	100%	100%	100%	100%	100%	100%	100%	90%
	2000	100%	100%	100%	100%	100%	100%	94%	83%
	1900	100%	100%	100%	100%	100%	98%	86%	76%
	1800	100%	100%	100%	100%	100%	90%	78%	69%
	1700	100%	100%	100%	100%	100%	95%	82%	61%
	1600	100%	100%	100%	100%	100%	85%	73%	54%
	1500	100%	100%	100%	100%	90%	76%	65%	N.D.
	1400	100%	100%	100%	96%	80%	67%	57%	N.D.
	1300	100%	100%	100%	84%	70%	58%	N.D.	N.D.
1200	100%	100%	90%	73%	60%	N.D.	N.D.	N.D.	
1100	100%	97%	78%	62%	50%	N.D.	N.D.	N.D.	
1000	100%	83%	65%	51%	N.D.	N.D.	N.D.	N.D.	
		600	700	800	900	1000	1100	1200	1300
		L							

Indipendentemente dal peso della porta, per porte sottoposte ad un intenso utilizzo come nel caso di edifici aperti al pubblico, porte con chiudiporta o porte ad azionamento motorizzato il limite di impiego è limitato a H 2200 e L 1000 con l'utilizzo della terza o quarta cerniera (cerniera blu) come da diagramma.

Whatever the door weight, doors subject to heavy duty, such as public building, doors with closers or automatic doors have a limited range of application limited to H 2200 and L 1000 and must be fitted with an addition hinge (blue hinge) as in the diagram.



- Esempio
1. Dim. LxH (WxH) 1200x2200 = 100% Portata 2 cerniere (Load Capacity 2 hinges)
  2. Dim. LxH (WxH) 1200x2300 = 100% Portata 3 cerniere (Load Capacity 3 hinges)
  3. Dim. LxH (WxH) 1400x2800 = 100% Portata 4 cerniere (Load Capacity 4 hinges)

I diagrammi hanno validità per spessore profili (Load charts is for profiles thickness)  $\geq$  a 1,5 mm

ART.	PORTATA LOAD CAPACITY
352X.7X	100% = 80 Kg
355X.7X	100% = 120 Kg