



DAKAR

CARRELLO FISSO A UN CUSCINETTO



Carrello fisso a un cuscinetto | One-bearing fixed roller |
 Chariot fixe a un roulement | Carro fijo con un cojinete



Supporto cuscinetto in alluminio estruso; cuscinetto in acciaio temprato rivestito in nylon con fibra di vetro.
 Portata: 60 kg per anta.



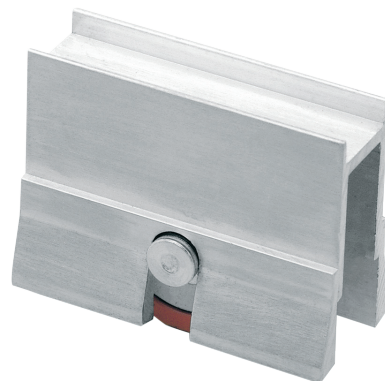
Bearing support in extruded aluminum; bearing in tempered steel covered in nylon with fiberglass.
 Load capacity: 60 kg per sash.



Bearing support in extruded aluminum; bearing in tempered steel covered in nylon with fiberglass.
 Load capacity: 60 kg per sash.



Bearing support in extruded aluminum; bearing in tempered steel covered in nylon with fiberglass.
 Load capacity: 60 kg per sash.



ART.	6661			
Imballo Package Conditionnement Embalaje	100 Pz			
Finiture disponibili Available finishes Finitions disponibles Acabados disponibles	1	2	3	4

