



# EMPIRE

## Rostro di chiusura supplementare universale



Rostro di chiusura supplementare universale | Universal additional locking point | Gâche de fermeture supplémentaire universel | Punto de cierre suplementario universal



Rostro in zama;  
spessori in nylon; viti  
in acciaio inox



Zamak slider; nylon  
thickness; inox steel  
screws



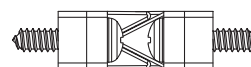
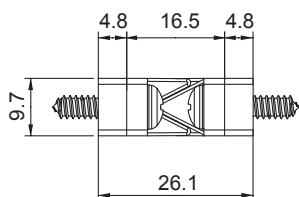
Gâche en zamak ;  
cales en nylon ; vis en  
acier inox



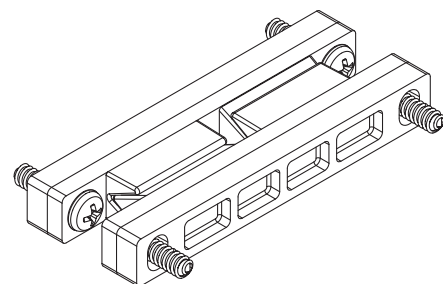
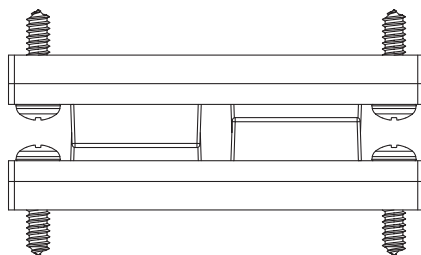
Gâche en zamak ;  
cales en nylon ; vis en  
acier inox



ART.	4227			
Imballo   Package   Conditionnement   Embalaje	50 Pz			
Finiture disponibili   Available finishes Finitions disponibles   Acabados disponibles	1	2	3	4



ART.	NODO / SECTION
4227	A01 - A02 - A03 A05 - A06 - A08 A20 - A21 - A22 - A23



### APPLICAZIONE / APPLICATION

4.8

**CE**

4.5

**R40**

**CE 10**

4.5

**CW**

4.5

Tranciare l'aletta dell'anta oppure sfondare lateralmente l'asola della basetta  
Cut off the wing of the leaf or break the side slot of the base