



CONSULTA
IL CATALOGO
ONLINE
GO TO
THE ONLINE
CATALOGUE

EASY BLOCK

BRACCIO MULTI STAY OPEN 0 - 90°



Braccio Multi Stay Open 0 - 90° | Multi Stay Open Arm 0 - 90°
Multi Stay Open Bras 0 -90° | Multi Stay Open Brazo 0 - 90°



Leva, pioli e grano
in acciaio inox; slitta
in alluminio estruso;
terminale e blocchetti
in zama; cursore in
nylon (forprene)



Stainless steel lever,
pins and grub screw;
slide in extruded
aluminum; terminal
and blocks in zamak;
slider in nylon
(forprene)

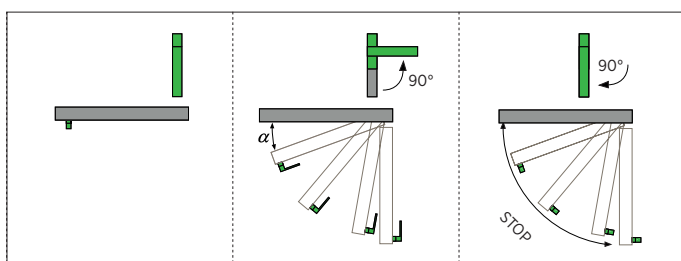
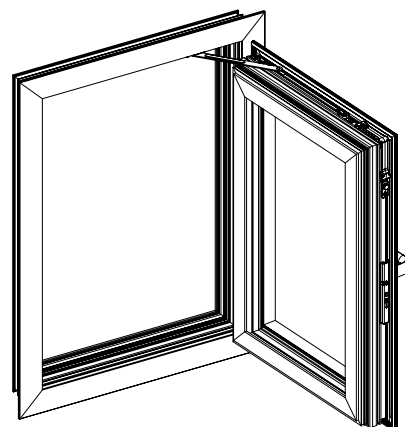
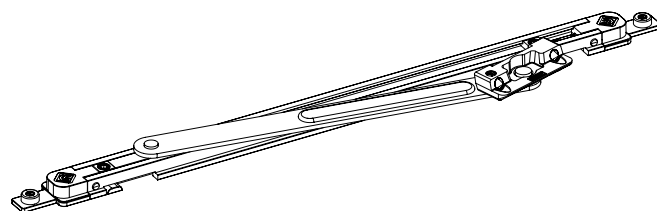
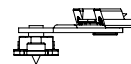
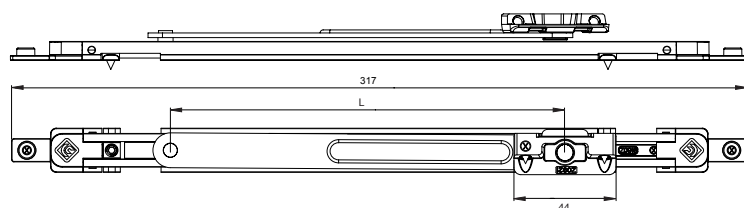


Levier, goupilles et
vis sans tête en acier
inoxydable; coulisse
en aluminium extrudé
; borne et blocs en
zamak; curseur en
nylon (forprene)



Palanca, pasadores y
prisionero de acero
inoxidable; corredera
de aluminio extruido;
terminal y bloques en
zamak; deslizador de
nylon (forpreno)

ART.	1211.20 112.21
Imballo Package Conditionnement Embalaje	20 Pz
Finiture disponibili Available finishes Finitions disponibles Acabados disponibles	2 3 4



ART.	L (mm)	NODO SECTION
1211.20	170	A01 - A03 - A05 - A20 - A21 - A22
1212.21	230	