

# EMPIRE SYSTEM

La linea completa di soluzioni per facciate continue,  
aperture vasistas e sporgere.

Complete line of curtain wall solutions, bottom hung and top hung opening.



**Grande versatilità e alte prestazioni - portata massima 165 Kg**

Great flexibility and high performance - maximum load 165 Kg (360 lbs)





**01**

**EMPIRE SYSTEM**  
**La linea completa di soluzioni  
per facciate continue,  
aperture vasistas e sporgere.**

Complete line of curtain wall  
solutions, bottom hung and  
top hung opening.

**pag. 4**

**02**

**Perché scegliere EMPIRE SYSTEM.**  
Why choose EMPIRE SYSTEM.

**pag. 5**

**03**

**EMPIRE SYSTEM**

**pag. 6**

**04**

**CERNIERE EGRESSO**  
Stay Hinges

**pag. 22**

**05**

**Digramma**  
Configuration chart

**pag. 28**

**06**

**Finiture**  
Finishes

**pag. 34**

# EMPIRE SYSTEM

## La linea completa di soluzioni per facciate continue, aperture vasistas e sporgere.

Complete line of curtain wall solutions, bottom hung and top hung opening.

01

EMPIRE SYSTEM è il sistema completo di accessori per facciate continue, aperture vasistas e sporgere realizzato da Master per coniugare grande flessibilità ed elevate prestazioni. La ferramenta perimetrale, permette di avere più punti di chiusura lungo il profilo a seconda delle dimensioni dell'anta. L'ampia gamma di accessori della linea, permette di soddisfare le molteplici esigenze del mercato, offrendo grande flessibilità e diverse possibilità di personalizzazione. Si tratta di una linea completa composta da chiusure perimetrali, cerniere a compasso, bracci limitatori e cremonesi.

Gli accessori EMPIRE SYSTEM sono certificati per rispondere agli standard di sicurezza e alle prescrizioni normative dei diversi mercati.

La qualità dei materiali utilizzati consente di raggiungere prestazioni elevate e di ottenere una notevole durata nel tempo.

EMPIRE SYSTEM is the complete line of accessories for curtain wall, top hung and bottom hung opening, that was created by Master to combine great flexibility and high performance. The wide range of this accessories line, can meet the multiple needs of the market, offering great flexibility and different possibilities of customization.

It is a full line composed of locking points, stay hinges for curtain walls, limiter arms and cremone bolts.

The EMPIRE SYSTEM accessories are certified to meet the safety standards and regulatory requirements of different markets.

The quality of our production materials allows us to achieve high performance and to obtain remarkable durability.





# Perché scegliere EMPIRE SYSTEM.

## Why choosing EMPIRE SYSTEM.



### ► Completezza di gamma / Complete range

**La gamma EMPIRE, grazie alle diverse combinazioni, copre tutte le esigenze del mercato garantendo la massima efficienza. Il prodotto si adatta alla maggior parte dei sistemi presenti oggi sul mercato.**

Thanks to multiple combinations, the EMPIRE range can satisfy all the market demands assuring the best performance. This complete product range ensures compatibility with most systems.

### ► Prestazioni / Performance

**EMPIRE SYSTEM comprende una serie completa di soluzioni che offrono grande versatilità e alte prestazioni. E' infatti possibile combinare i diversi prodotti della linea raggiungendo portate fino 165 kg, mantenendo i più elevati standard di sicurezza.**

EMPIRE SYSTEM includes a full set of solutions that offer great versatility and high performance. It is possible to combine the different products within the line to achieve a maximum load of 165 kg (360 lbs.), maintaining the highest safety standards.

### ► Estetica / Design

**EMPIRE SYSTEM consente di abbinare diversi punti di chiusura e soluzioni di apertura manuali e motorizzate in maniera tale da poter garantire il minimo impatto estetico sull'infisso.**

EMPIRE SYSTEM allows the combination of different locking points and opening solutions (manual or motorized) in such a way as to minimize aesthetic impact on the frame.

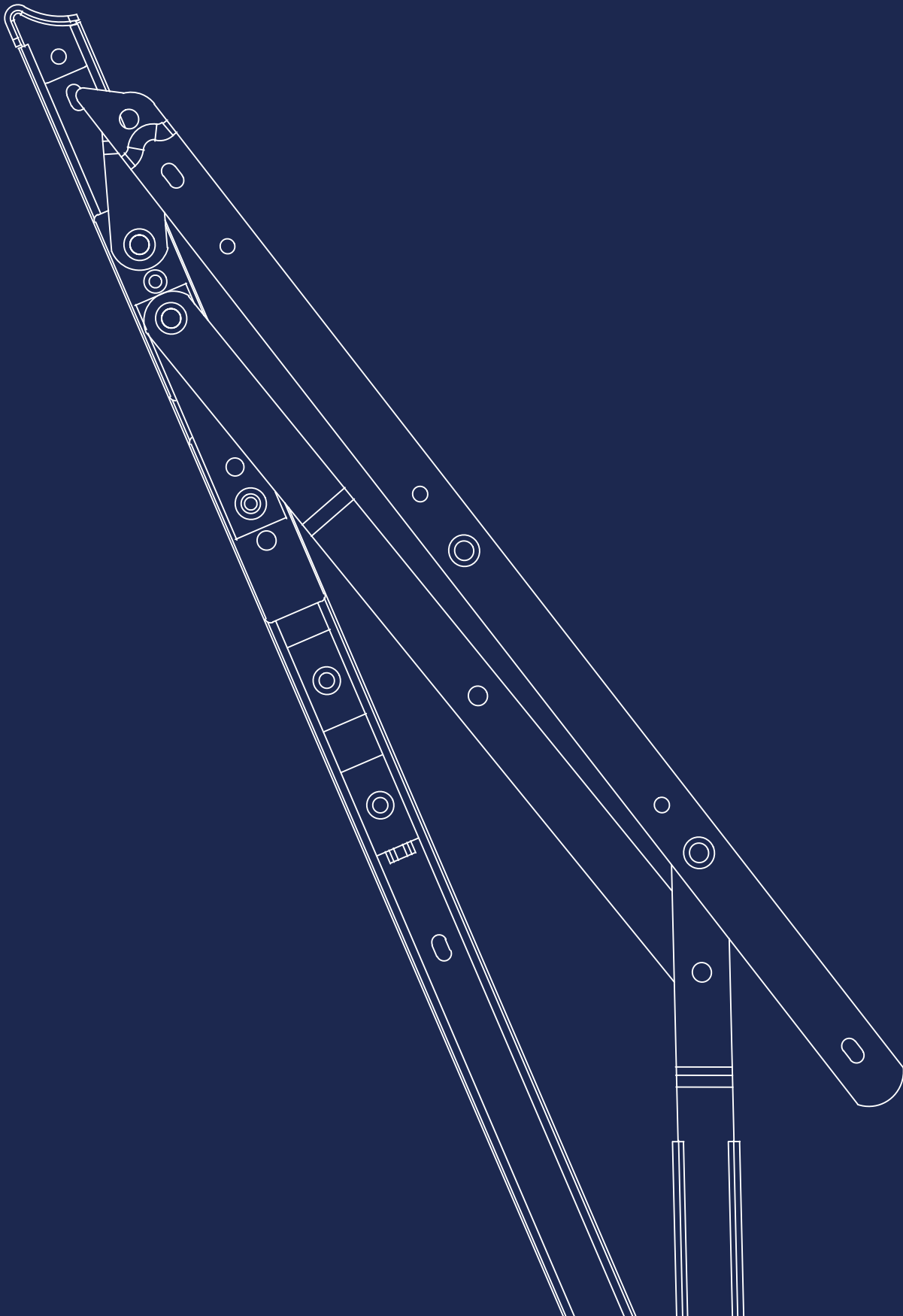
### ► Sicurezza / Security

**La serie di bracci limitatori ed i sistemi di chiusura della linea EMPIRE SYSTEM sono certificati per rispondere agli standard di sicurezza e alle prescrizioni normative dei diversi mercati.**

The EMPIRE SYSTEM limiter arms and locking system are certified to meet the safety standards and regulatory requirements of different markets.

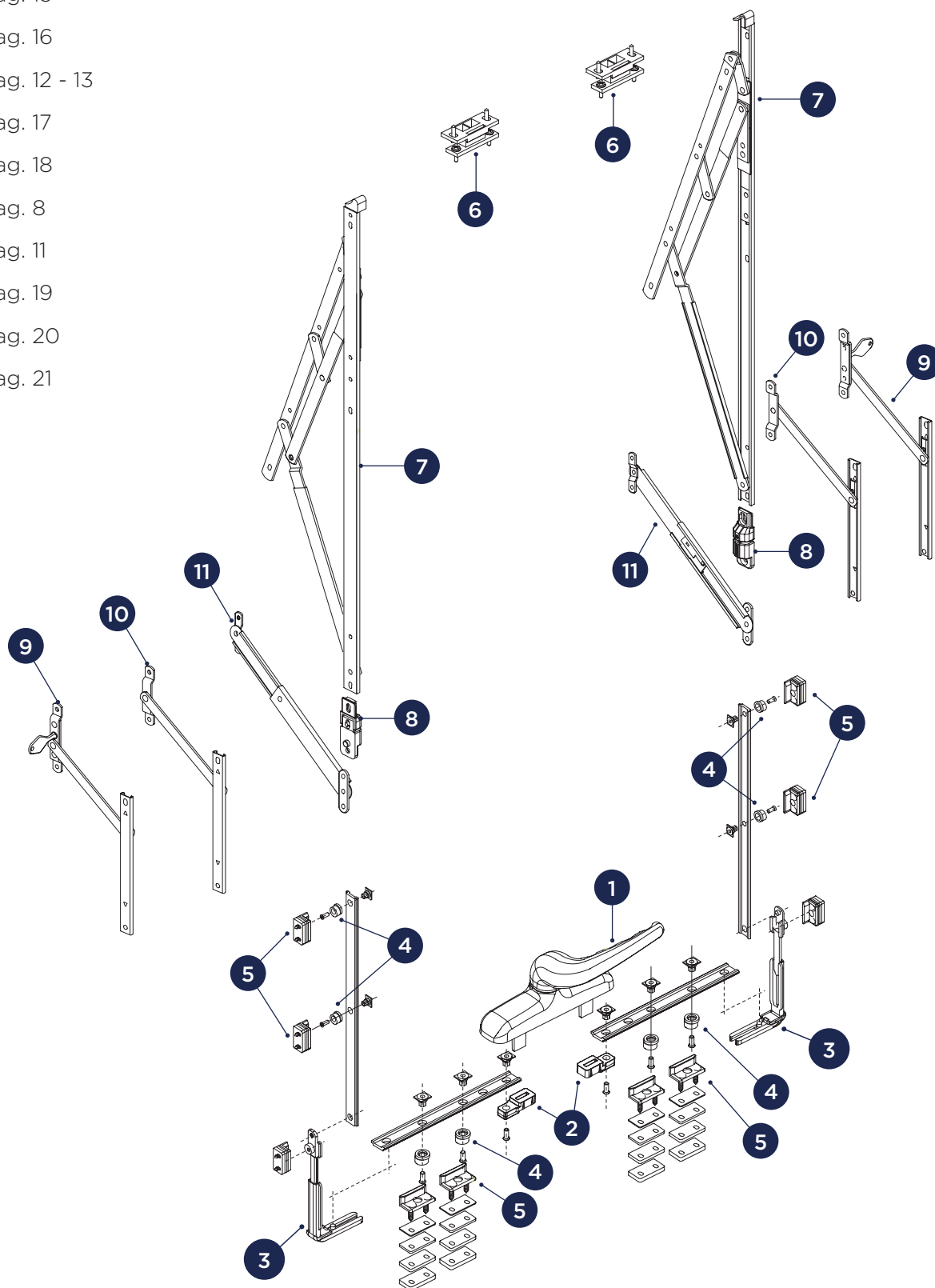
# EMPIRE SYSTEM

03



# EMPIRE

- 1 Pag. 14
- 2 Pag. 15
- 3 Pag. 16
- 4 Pag. 12 - 13
- 5 Pag. 17
- 6 Pag. 18
- 7 Pag. 8
- 8 Pag. 11
- 9 Pag. 19
- 10 Pag. 20
- 11 Pag. 21



# EMPIRE

## Cerniere a compasso per facciata continua



Cerniere a compasso per facciata continua | Stay hinge for curtain wall | Compas pour murs-rideaux | Compases para muro cortina



Cerniere in acciaio inox AISI 304 con pattino di frizionamento rivestito in nylon autolubrificante, regolatore di posizionamento in zama.



Hinge in AISI 304 stainless steel with friction shoe covered in self-lubricating nylon, zamak position regulator.



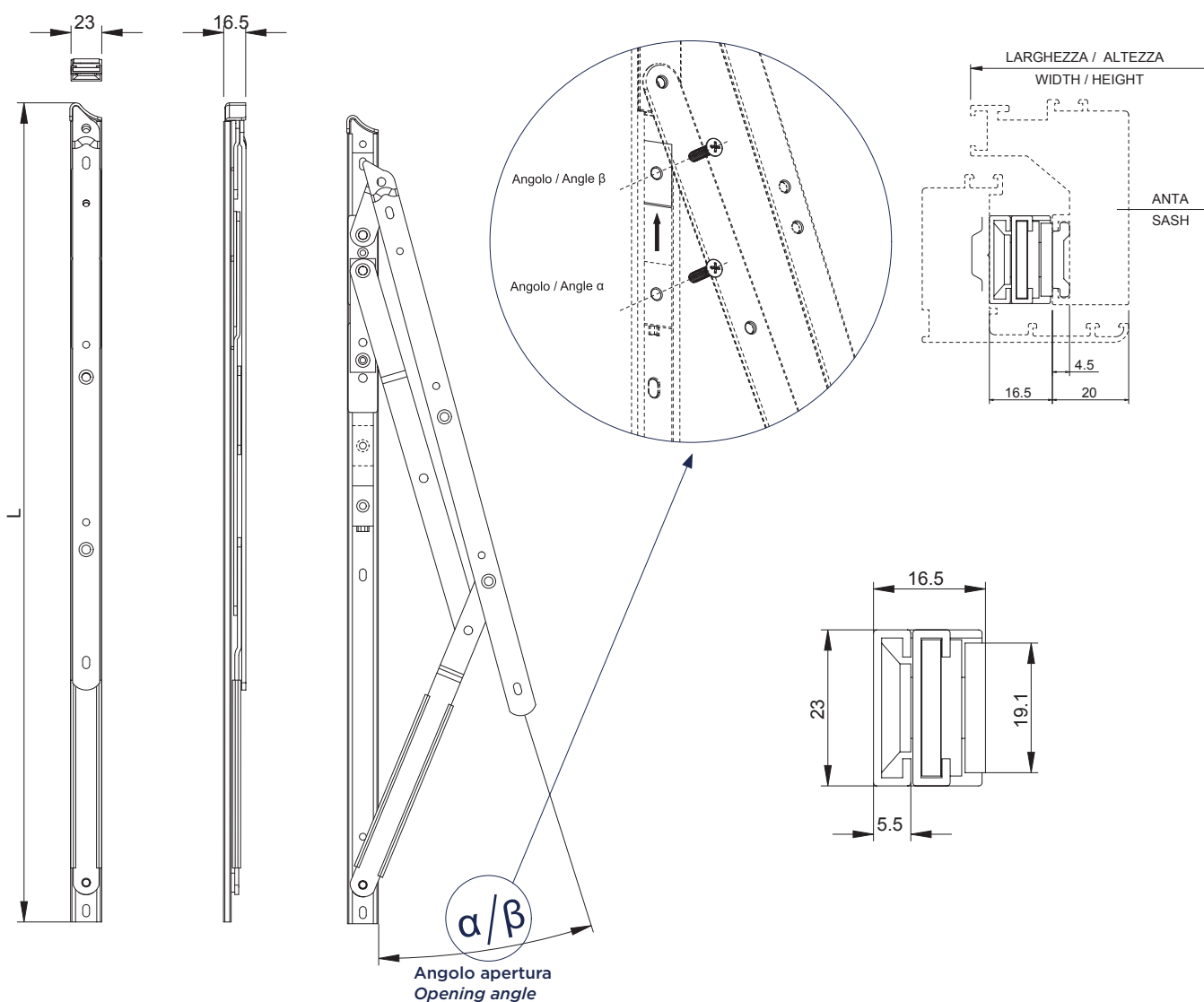
Charnières en acier inox AISI 304 avec patin de friction revêtu en nylon autolubrifiant, régulateur de position en zamak.



Bisagras de acero inox AISI 304 con cojinete de fricción revestido en nylon autolubrificante, regulador de posicionamiento de zamak.



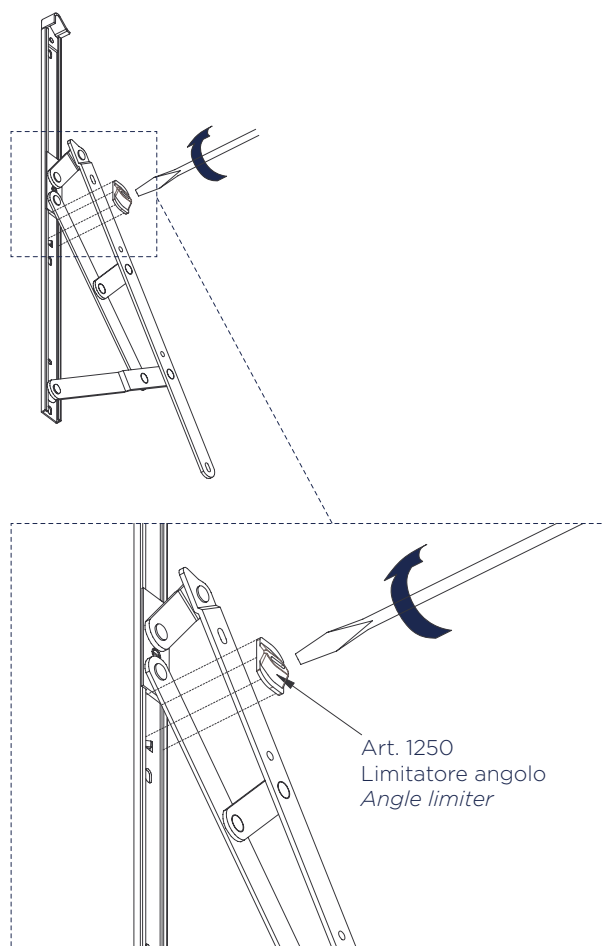
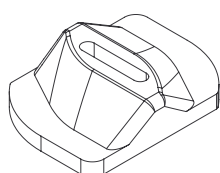
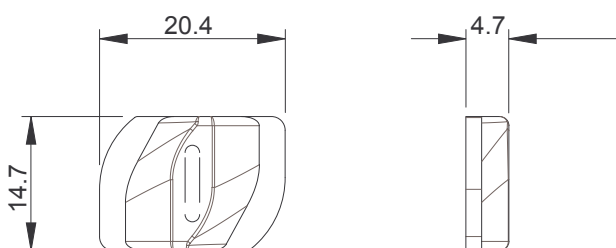
ART.	1206.XX						
Imballo   Package   Conditionnement   Embalaje	5 Cp						
Finiture disponibili   Available finishes Finitions disponibles   Acabados disponibles	<table border="1"> <tr> <td>1</td> <td>2</td> <td>3</td> <td>4</td> <td>5</td> <td>6</td> </tr> </table>	1	2	3	4	5	6
1	2	3	4	5	6		



SELEZIONE DEL COMPASSO IN FUNZIONE DELLE DIMENSIONI DELLA FACCIATA  
 STAY HINGE SELECTION FOR FACADE DIMENSION

ART.	L		ALTEZZA ANTA (MM) HEIGHT SASH (MM)	LARGHEZZA ANTA (MM) WIDTH SASH (MM)	ANGOLI DI APERTURA OPENING ANGLE			PORTATA LOAD CAPACITY
	(INCH)	(MM)	MIN   MAX	MAX				
1206.28	28"	713	1800   2000	2000	$\alpha$	20°	default	140
					$\beta$	10°	screw	148
1206.24	24"	599.5	1600   1800	1800	$\alpha$	25°	default	120
					$\beta$	20°	screw	130
1206.22	22"	555.5	1600   1800	1800	$\alpha$	30°	default	110
					$\beta$	20°	screw	125
1206.20	20"	509.5	1400   1600	1600	$\alpha$	30°	default	100
					$\beta$	20°	screw	120
1206.18	18"	455.5	1200   1400	1500	$\alpha$	35°	default	75
					$\beta$	25°	screw	105
1206.16	16"	410.5	1000   1200	1200	$\alpha$	35°	default	65
					$\beta$	25°	screw	95
1206.14	14"	349.5	800   1000	1200	$\alpha$	40°	default	50
					$\beta$	30°	screw	72
1206.12	12"	311	600   800	1200	$\alpha$	40°	default	45
					$\beta$	30°	screw	65
1206.10	10"	260.5	450   600	1200	$\alpha$	40°	default	35
					$\beta$	35°	screw	40


ART.	1250						
Imballo   Package   Conditionnement   Embalaje	1 Cp						
Finiture disponibili   Available finishes Finitions disponibles   Acabados disponibles	<table border="1"> <tr> <td>1</td> <td>2</td> <td>3</td> <td>4</td> <td>5</td> <td>6</td> </tr> </table>	1	2	3	4	5	6
1	2	3	4	5	6		



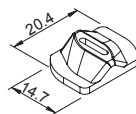


VARIAZIONE DELLA PORTATA IN FUNZIONE DELL'ANGOLO DI APERTURA, CON E SENZA LIMITATORI  
 STAY HINGE LOAD CAPACITY WITH AND WITHOUT LIMITERS

Angolo di apertura Opening Angle	3°	8°	10°	15°	20°		
1206.28	Load 165 Kg	Load 155 Kg	Load 148 Kg	Load 143 Kg	Load 140 Kg		
					$\alpha$		
Angolo di apertura Opening Angle	5°	10°	15°	20°	25°		
1206.24	Load 150 Kg	Load 145 Kg	Load 138 Kg	Load 130 Kg	Load 120 Kg		
				$\beta$	$\alpha$		
Angolo di apertura Opening Angle	5°	10°	15°	20°	25°	30°	
1206.22	Load 145 Kg	Load 139 Kg	Load 132 Kg	Load 125 Kg	Load 118 Kg	Load 110 Kg	
				$\beta$		$\alpha$	
Angolo di apertura Opening Angle	6°	10°	15°	20°	25°	30°	
1206.20	Load 140 Kg	Load 135 Kg	Load 128 Kg	Load 120 Kg	111 Kg	Load 100 Kg	
				$\beta$		$\alpha$	
Angolo di apertura Opening Angle	7°	10°	15°	20°	25°	30°	35°
1206.18	Load 130 Kg	Load 128 Kg	Load 123 Kg	Load 116 Kg	Load 105 Kg	Load 91 Kg	Load 75 Kg
					$\beta$		$\alpha$
Angolo di apertura Opening Angle	8°	15°	20°	25°	30°	35°	
1206.16	Load 115 Kg	Load 111 Kg	Load 105 Kg	Load 95 Kg	Load 82 Kg	Load 65 Kg	
				$\beta$		$\alpha$	
Angolo di apertura Opening Angle	10°	15°	20°	25°	30°	35°	40°
1206.14	Load 95 Kg	Load 92 Kg	Load 87 Kg	Load 80 Kg	Load 72 Kg	Load 62 Kg	Load 50 Kg
					$\beta$		$\alpha$
Angolo di apertura Opening Angle	10°	15°	20°	25°	30°	35°	40°
1206.12	Load 80 Kg	Load 79 Kg	Load 77 Kg	Load 72 Kg	Load 65 Kg	Load 56 Kg	Load 45 Kg
					$\beta$		$\alpha$
Angolo di apertura Opening Angle	15°	20°	25°	30°	35°	40°	
1206.10	Load 55 Kg	Load 50 Kg	Load 47 Kg	Load 44 Kg	Load 40 Kg	Load 35 Kg	
					$\beta$	$\alpha$	

 Con braccio limitatore  
With limiter arm

 Con 1250  
With 1250



$\alpha$  Apertura massima  
Max opening

$\beta$  Apertura limitata con vite  
Limited opening with screw

# EMPIRE

## REGOLATORE DI POSIZIONAMENTO



Regolatore di posizionamento | Position regulator | Régulateur de position | Regulador de posición



Corpo in zama;  
vite di regolazione  
millimetrica in acciaio  
inox.



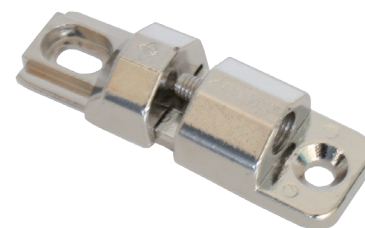
Body in zamak;  
adjustment screw  
stainless steel.



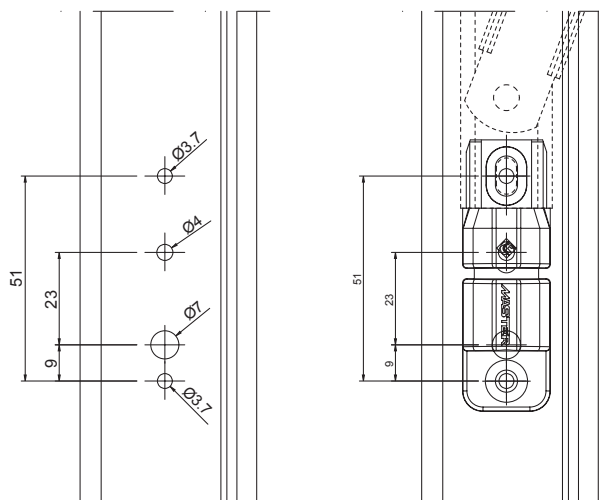
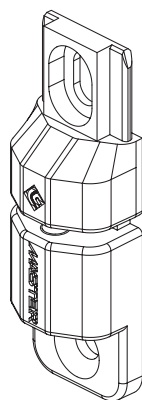
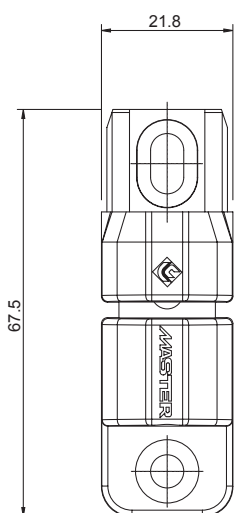
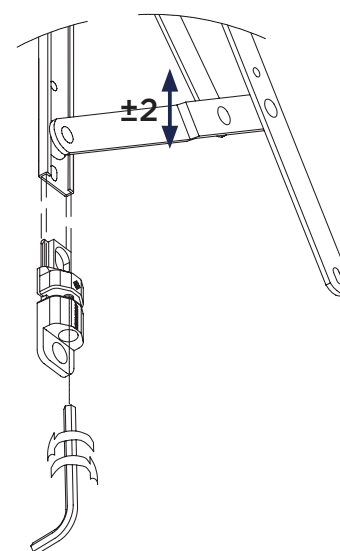
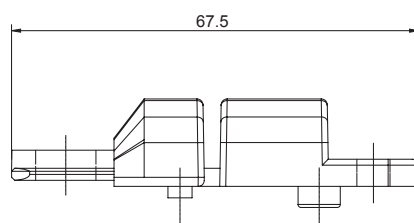
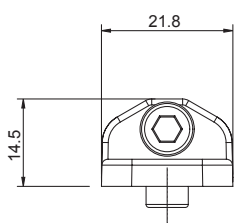
Corps en zamak;  
ajustement vis en  
acier inoxydable.



Cuerpo de zamak;  
ajuste de acero  
inoxidable tornillo.



ART.	1251.1					
Imballo   Package   Conditionnement   Embalaje	20 Cp					
Finiture disponibili   Available finishes Finitions disponibles   Acabados disponibles	1	2	3	4	5	6



# EMPIRE

## SERIE DI ACCESSORI PER CHIUSURE PERIMETRALI SU FACCIATE CONTINUE

Accessori per chiusure perimetrali apribili facciate continue | Locking accessories for operable curtain wall | Accessoires pour fermetures de ouverture facade | Accesorios de cierre por muro cortina aprible



Cremonese EMPIRE,  
rinvio d'angolo,  
riscontri.



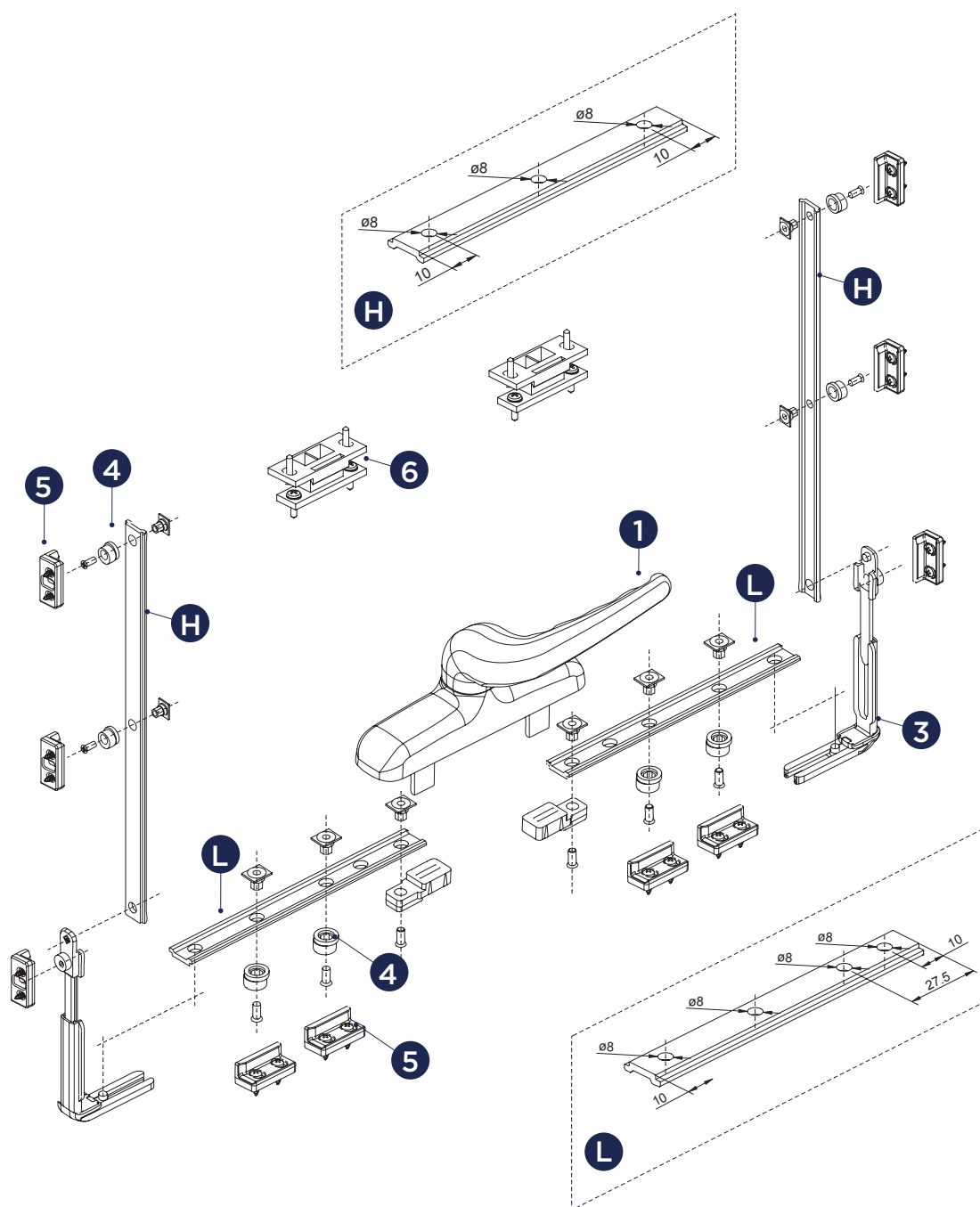
EMPIRE cremonese  
bolt, corner return,  
counterplate parts.



Crémone EMPIRE,  
renvoi d'angle,  
gâches.



Cremona EMPIRE,  
reenvío de ángulo,  
cerraderos.



1

CREMONESE EMPIRE MANICO DISASSATO DESTRO EMPIRE CREMONE BOLT WITH RIGHT CRANK HANDLE	
ART	DESCRIZIONE DESCRIPTION
6006	2 cursori con sporgenza 44 mm. <i>2 protruding sliders 44 mm.</i>
6006.1	2 cursori con sporgenza 24 mm. <i>2 protruding sliders 24 mm.</i>
6006.11	1 cursore con sporgenza 44 mm. <i>1 protruding sliders 44 mm.</i>

4

PERNI DI CHIUSURA LOCKING PINS	
ART	DESCRIZIONE DESCRIPTION
4241	9 mm
4242	12 mm
4246	8 mm (regolabile in pressione) <i>8 mm (pressure - adjustable)</i>

1

CREMONESE EMPIRE MANICO DISASSATO SINISTRO EMPIRE CREMONE BOLT WITH LEFT CRANK HANDLE	
ART	DESCRIZIONE DESCRIPTION
6006S	2 cursori con sporgenza 44 mm. <i>2 protruding sliders 44 mm.</i>
6006.1S	2 cursori con sporgenza 24 mm. <i>2 protruding sliders 24 mm.</i>
6006.11S	1 cursore con sporgenza 44 mm. <i>1 protruding sliders 44 mm.</i>

5

RISCONTRI COUNTERPLATES	
ART	DESCRIZIONE DESCRIPTION
1252.18	Riscontro con spessori <i>Counterplate with thickness</i>
1252.19	Riscontro <i>Counterplate</i>

2

BLOCCHETTI DI COLLEGAMENTO CONNECTION ELEMENTS	
ART	DESCRIZIONE DESCRIPTION
6406.1	Cava 20 mm (per cremonesi 6006-6006S / 6006.1-6006.1S) <i>20 mm Groove</i> (for cremone 6006-6006S / 6006.1-6006.1S)

6

ROSTRO DI CHIUSURA SUPPLEMENTARE ADDITIONAL INTERMEDIATE THIRD CLOSING POINT	
ART	DESCRIZIONE DESCRIPTION
1252.8	Rostro di chiusura supplementare <i>Additional third locking point</i>

3

RINVII D'ANGOLO CORNER TRANSMISSION	
ART	DESCRIZIONE DESCRIPTION
1252.12	Camera europea <i>Euro groove</i>

# EMPIRE CREMONESE



Cremonesi | Cremona bolts  
Cremones | Cremonas



Cassa e manico in alluminio pressofuso; cremagliere, pignone e copricassa in zama zincata; guida e rondella di frizionamento in delrin; viti in acciaio zincato; viti di bloccaggio della cremonese su profilo in acciaio inox.



Case and handle in die-cast aluminum; rack, pinion and cover in galvanized zamak; Delrin guide and friction washer; galvanized steel screws; screws for locking cremone bolts on profile in stainless steel.



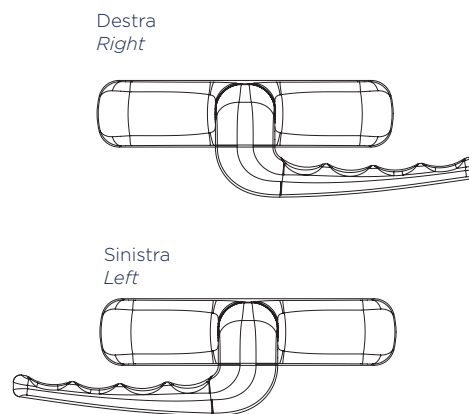
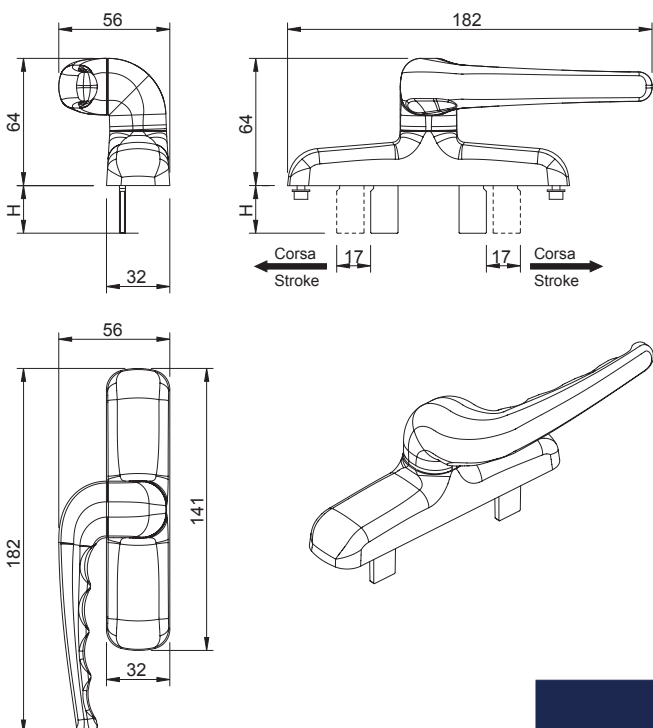
Caisse et poignée en aluminium moulé sous pression; crémaillères, pignon et couvre-caisse en zamak zingué; guide et rondelle de friction en delrin; vis en acier zingué; vis de blocage de la crémonne sur profilé en acier inox.



Caja y mango de aluminio fundido a presión; cremalleras, piñón y cobertura de caja de zamac galvanizado; guía y arandela de fricción de delrin; tornillos de acero galvanizado; tornillos de bloqueo de la cremona sobre perfil de acero inox.



ART.	6006   6006.1   6006.11   6006S   6006.1S   6006.11S
Imballo   Package   Conditionnement   Embalaje	20   5 Pz
Finiture disponibili   Available finishes Finitions disponibles   Acabados disponibles	1 2 3 4 5 6



DESCRIZIONE DESCRIPTION	H	Art. Destro Art. Righth	Art. Sinistro Art. Left
Cremonese EMPIRE manico disassato - 2 cursori EMPIRE cremone bolt with crank handle - 2 protruding sliders	44 mm	6006	6006S
Cremonese EMPIRE manico disassato - 2 cursori EMPIRE cremone bolt with crank handle - 2 protruding sliders	24 mm	6006.1	6006.1S
Cremonese EMPIRE manico disassato - 1 cursore EMPIRE cremone bolt with crank handle - 1 protruding slider	44 mm	6006.11	6006.11S





# EMPIRE

## RINVIO D'ANGOLO



Rinvio d'angolo | Corner return | Renvoi d'angle |  
Transmisión de esquina



Corpo e astine in  
zama; lamelle e perno  
eccentrico in acciaio  
Inox, rullino in ottone.



Body and rods in  
zamak; stainless steel  
reeds and eccentric  
pin, roll brass.



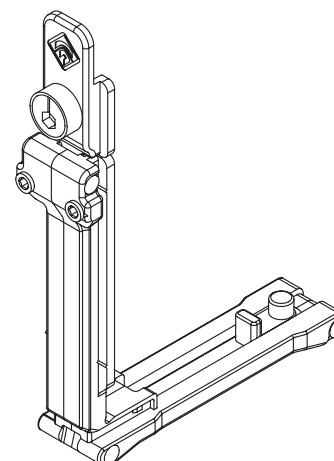
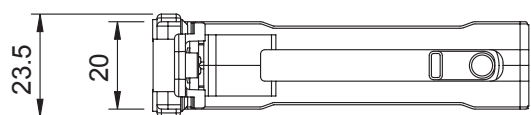
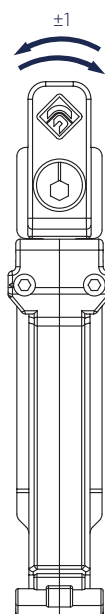
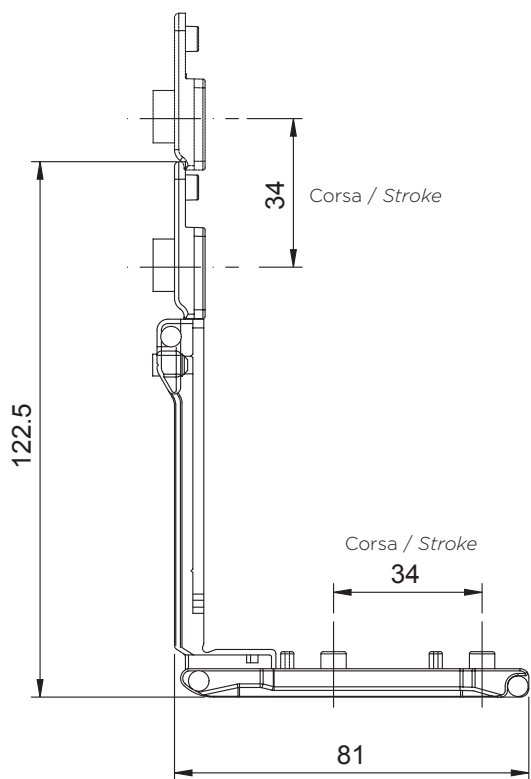
Corps at tiges en  
zamak; lattes et en  
acier inoxydable de  
broche excentrique,  
laiton rouleau.



Cuerpo y varillas  
de zamak; listones  
y acero inoxidable  
perno excéntrico,  
latón rollo.



ART.	1252.12					
Imballo   Package   Conditionnement   Embalaje	10 Pz					
Finiture disponibili   Available finishes Finitions disponibles   Acabados disponibles	1	2	3	4	5	6



# EMPIRE

## RISCONTRI



Riscontri | Counterplate | Gâches | Cerraderos



Corpo in zama;  
spessori in nylon,  
viti autofilettanti TCCR  
Ø3.5x13 in acciaio  
zincato.



Body in zamak; nylon  
thicknesses, screws  
galvanized steel  
TCCR Ø3.5x13.



Corps en zamak;  
épaisseurs en nylon,  
acier galvanisé vis  
TCCR Ø3.5x13.

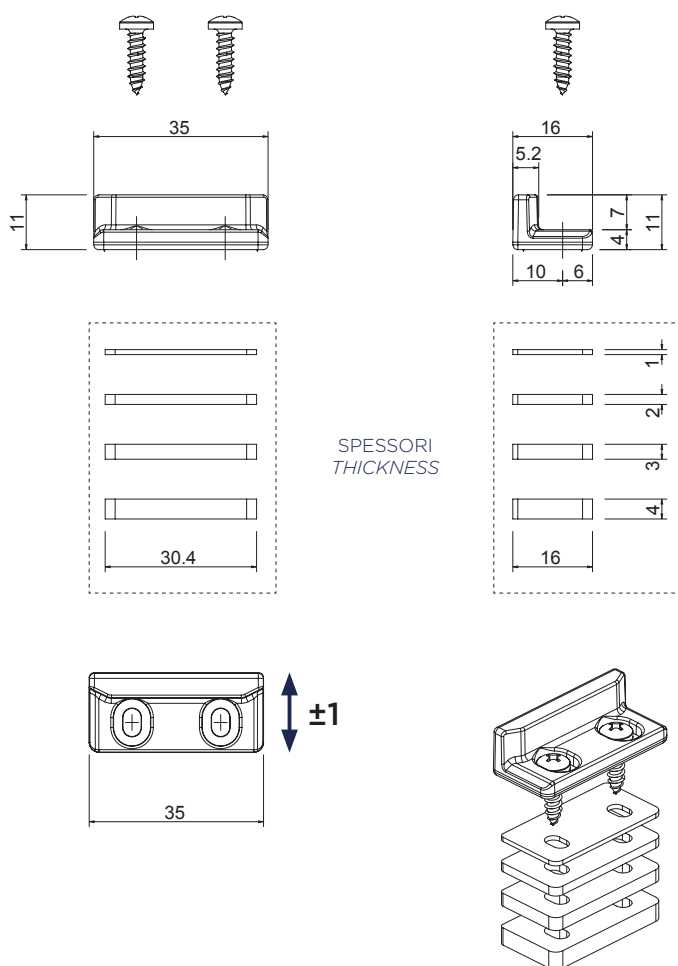


Cuerpo de zamak;  
espesore de nylon,  
acero galvanizado  
tornillos TCCR  
Ø3.5x13.



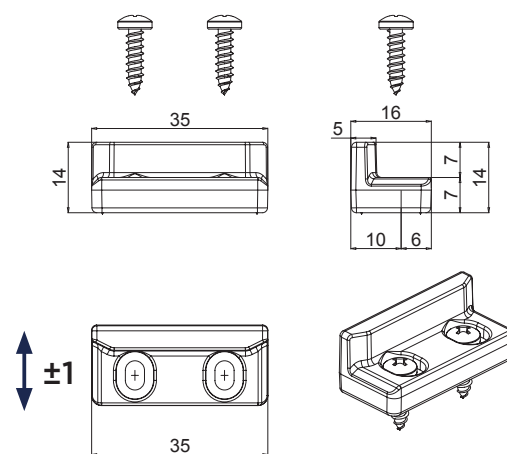
ART.	1252.18   1252.19					
Imballo   Package   Conditionnement   Embalaje	100 Pz					
Finiture disponibili   Available finishes Finitions disponibles   Acabados disponibles	1	2	3	4	5	6

Art. 1252.18

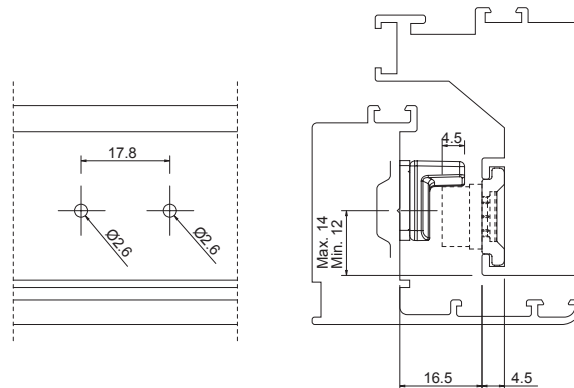


SPESSORI  
THICKNESS

Art. 1252.19



LAVORAZIONI  
MACHINING



# EMPIRE

## ROSTRO DI CHIUSURA SUPPLEMENTARE



Rostro di chiusura supplementare | Additional third locking point |  
 Crochet de fermeture supplémentaire | Punto de cierre suplementario



Corpo in nylon;  
viti autofilettanti in  
acciaio zincato.



Body in nylon; screws  
galvanized steel.

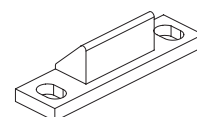
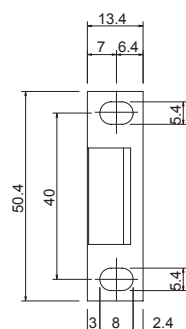
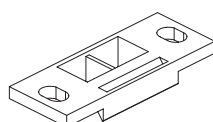
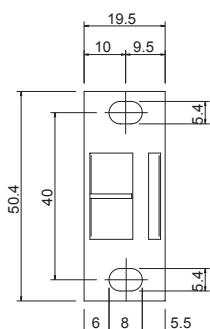
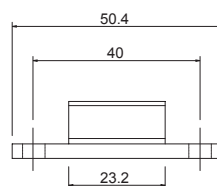
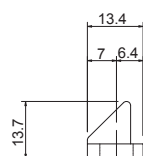
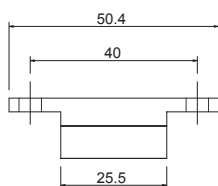
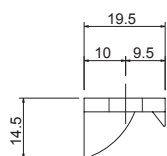
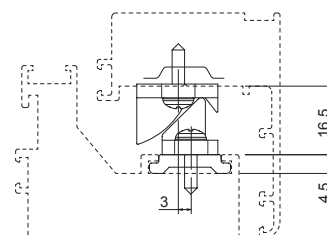
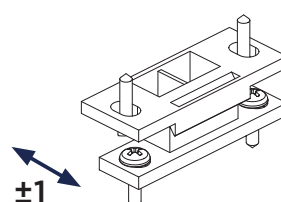
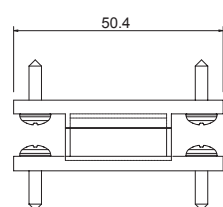
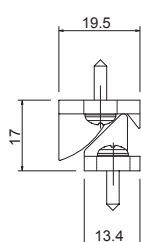


Corps en nylon; acier  
galvanisé vis.



Cuerpo de nylon;  
acero galvanizado  
tornillos.

ART.	1252.8						
Imballo   Package   Conditionnement   Embalaje	50 Pz						
Finiture disponibili   Available finishes Finitions disponibles   Acabados disponibles	<table border="1"> <tr> <td>1</td> <td>2</td> <td>3</td> <td>4</td> <td>5</td> <td>6</td> </tr> </table>	1	2	3	4	5	6
1	2	3	4	5	6		



# EMPIRE

## BRACCIO LIMITATORE DI APERTURA TELESCOPICO A SCATTO



Braccio limitatore telescopico a scatto | Telescopic limiter arm |  
Bras t lescopique limiteur d'ouverture | Compas limitador telesc pica



Bracci in acciaio inox  
AISI 304.



AISI 304 stainless  
steel arms.

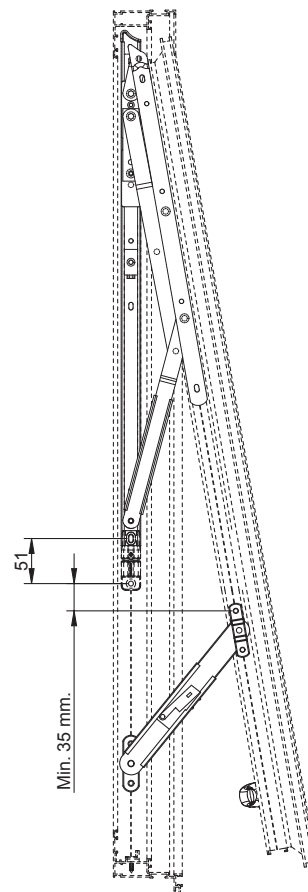
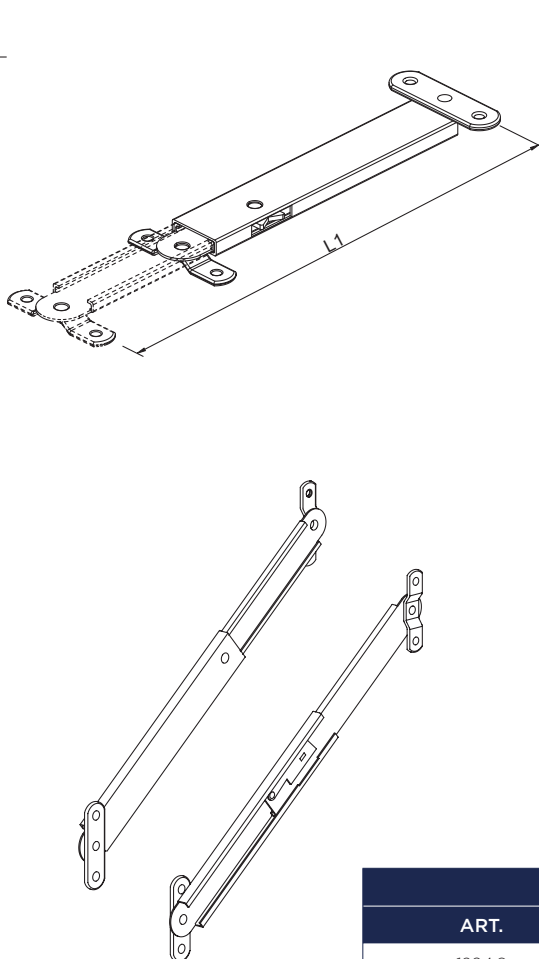
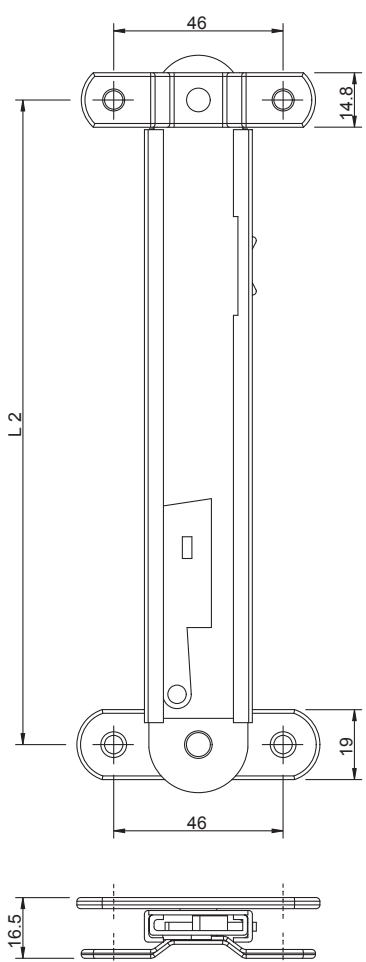


Bras en acier inox  
AISI 304.



Compases de acero  
inox AISI 304.

ART.	1204.8   1204.10   1204.12
Imballo   Package   Conditionnement   Embalaje	5 Cp
Finiture disponibili   Available finishes Finitions disponibles   Acabados disponibles	1 2 3 4 5 6



ART.	L1		L2
	(INCH)	(MM)	(MM)
1204.8	8"	205	150
1204.10	10"	255	175
1204.12	12"	305	200



# EMPIRE

## BRACCIO LIMITATORE DI APERTURA PER COMPASSI FRIZIONATO



Braccio limitatore di apertura frizionato | Limiter for operable curtain wall stay hinges | Bras limiteur d'ouverture pour compas murs-rideaux | Compás limitador frizionato



Bracci in acciaio inox AISI 304, blocchetto limitatore di apertura in delrin.



AISI 304 stainless steel arms, Delrin opening limit block.



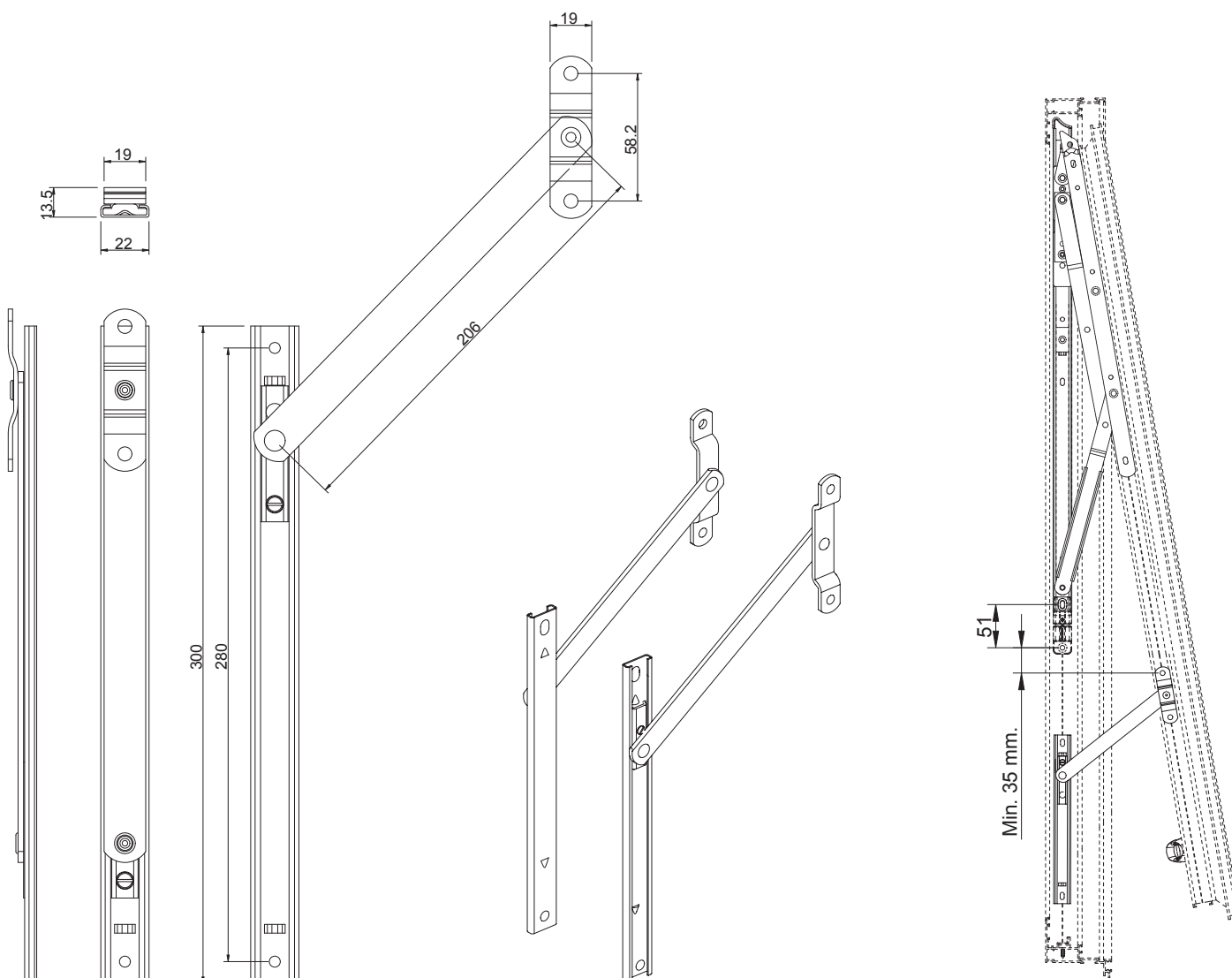
Bras en acier inox AISI 304, bloc limiteur d'ouverture en delrin.



Compases de acero inox AISI 304, bloque limitador de apertura de delrin.



ART.	1205.3					
Imballo   Package   Conditionnement   Embalaje	20 Cp					
Finiture disponibili   Available finishes Finitions disponibles   Acabados disponibles	1	2	3	4	5	6



# EMPIRE

## BRACCIO LIMITATORE DI APERTURA CON CHIAVE DI SGANCIO



Braccio limitatore di apertura per compassi facciata continua con chiave di sgancio | Limiter for operable curtain wall stay hinges with release key friction limit arm | Bras limiteur d'ouverture pour compas murs-rideaux avec clef a declic | Compás limitador de apertura para compases de muro cortina con llave de desenganche



Bracci in acciaio inox AISI 304, bloccetto limitatore di apertura in delrin, chiave di sgancio in alluminio pressofuso.



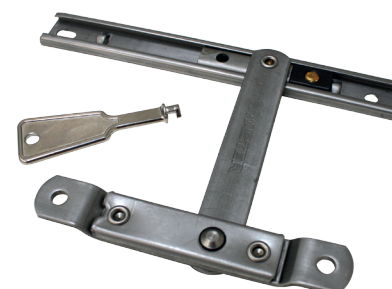
AISI 304 stainless steel arms, Delrin opening limit block, die-cast aluminum release key.



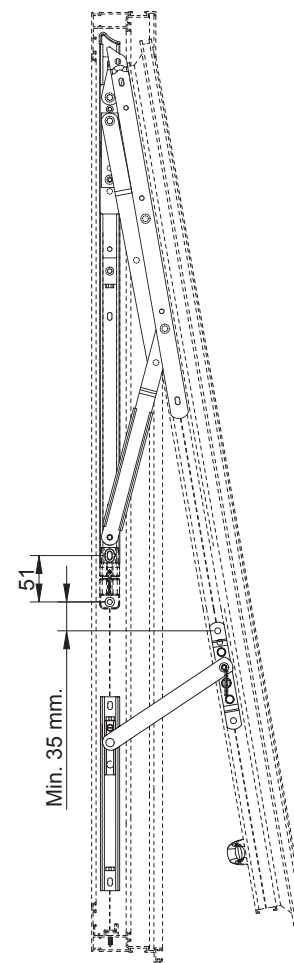
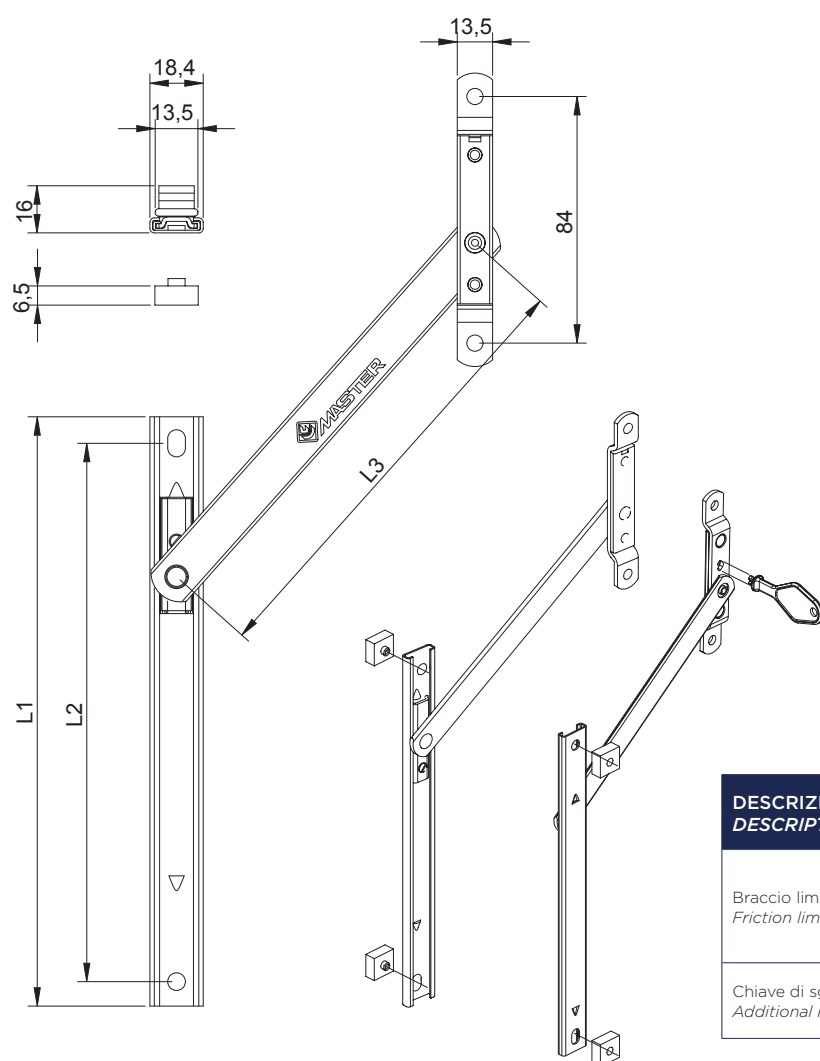
Bras en acier inox AISI 304, bloc limiteur d'ouverture en delrin, clef à dé clic en aluminium moulé sous pression.



Compases de acero inox AISI 304, bloque limitador de apertura de delrin, llave de desenganche de aluminio.



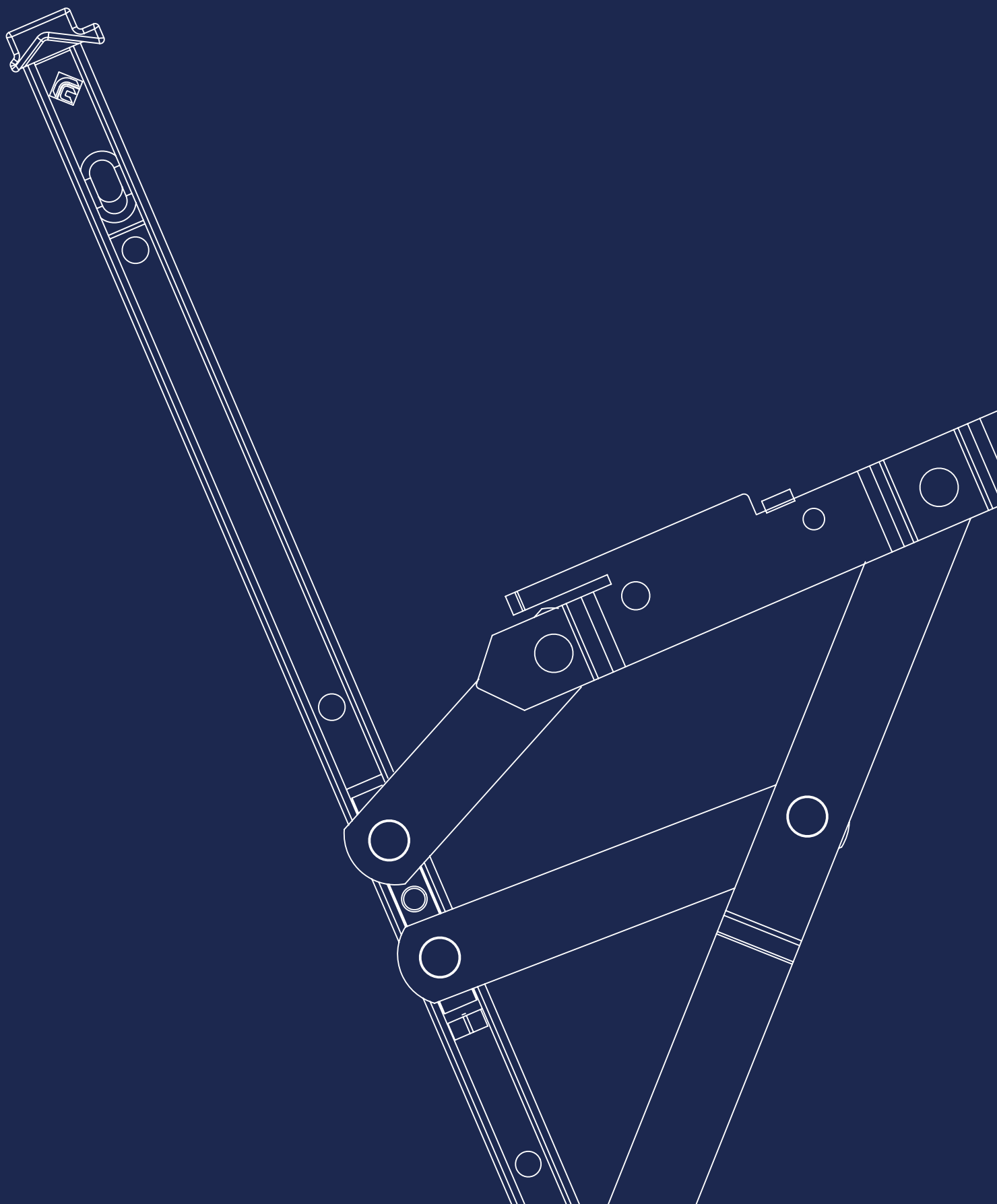
ART.	1203A.6   1203A.8   1203A.10	1203.1
Imballo   Package   Conditionnement   Embalaje	5 Cp	10 PZ
Finiture disponibili   Available finishes Finitions disponibles   Acabados disponibles	1 2 3 4 5 6	1 2 3 4 5 6



DESCRIZIONE DESCRIPTION	ART.	L1		L2 (MM)	L3 (MM)
		(INCH)	(MM)		
Braccio limitatore frizionato Friction limited arm	1203A.6	6"	150,5	131	85,4
	1203A.8	8"	201	184	152
	1203A.10	10"	254	236	180
Chiave di sgancio supplementare Additional release key	1203.1				

# CERNIERE EGRESSO *STAY HINGES*

04



# EASY RAPID

## CERNIERE A COMPASSO PER INFISSI A SPORGERE, BATTENTE E VASISTAS USO DOMESTICO



Cerniere a compasso per infissi | Stay hinges  
| Compas | Compases



Cerniere a compasso in acciaio inox amagnetico, con blocchetti di frizionamento in ottone e blocchetti terminale in nylon.



Stay hinges in non-magnetic stainless steel, with brass friction blocks and nylon terminal blocks.



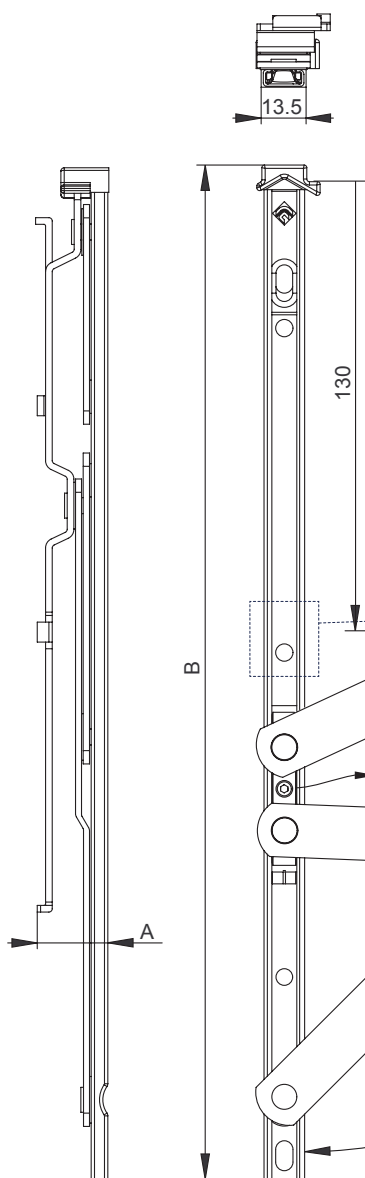
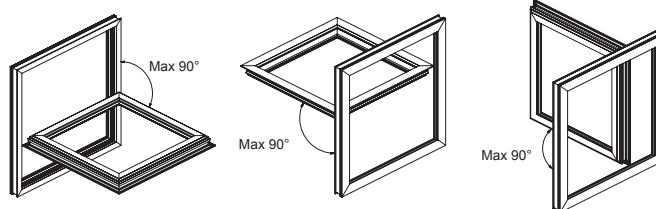
Compas en acier inox amagnétique, avec blocs de friction en laiton et blocs embout de tringle en nylon.



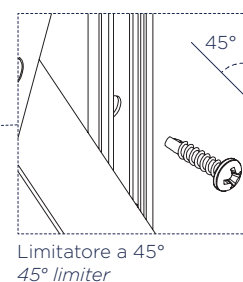
Compases de acero inox no magnético, con bloques de fricción de latón y bloques terminal de nylon.



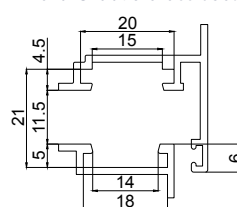
ART.	1231.12   1232.12					
Imballo   Package   Conditionnement   Embalaje	15 Cp					
Finiture disponibili   Available finishes Finitions disponibles   Acabados disponibles	1	2	3	4	5	6



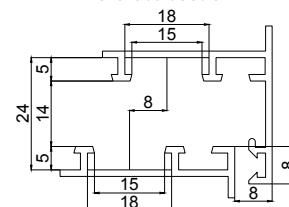
ART.	DIMENSIONI DIMENSION		ALTEZZA ANTA SASH HEIGHT	LARGHEZZA ANTA SASH WIDTH	TIPO DI APERTURA OPENING	ANGOLI DI APERTURA OPENING ANGLE		PORTATA MAX LOAD
	A	B	Min   Max	Min   Max		Opening Angle	Opening Limitation	Kg
1231.12	19,5	313	340   1800	340   450	Battente   <i>Side Hung</i>	$\alpha$	90° vite   screw	20
			340   450	340   1200	Sporgere   <i>Top Hung</i>	$\alpha$	90° vite   screw	20
			340   450	340   1200	Vasistas   <i>Bottom Hung</i>	$\alpha$	90° vite   screw	30
1232.12	21,5	378	340   1200	340   450	Battente   <i>Side Hung</i>	$\alpha$	45° vite   screw	20
			340   450	340   1200	Sporgere   <i>Top Hung</i>	$\alpha$	45° vite   screw	20
			340   450	340   1200	Vasistas   <i>Bottom Hung</i>	$\alpha$	45° vite   screw	30



**Art. 1231.12**  
Nodo Camera Europea  
Euro Groove cross section



**Art. 1232.12**  
Nodo ERRE 40  
ERRE 40 cross section



# EASY RAPID PLUS

## BRACCI EGRESSO PER INFISSI A SPORGERE, BATTENTE E VASISTAS



Cerniere egresso | Stay hinge for outside, casement and transom opening | Compases para proyectante exterior, batiente y abatible | Compas ouverture extérieure pour ouvertures projetant, frappe et à soufflet



Cerniere in acciaio inox AISI 304 con pattino di frizionamento rivestito in nylon autolubrificante, regolatore di posizionamento in zama.



Hinge in AISI 304 stainless steel with friction shoe covered in self-lubricating nylon, zamak position regulator.



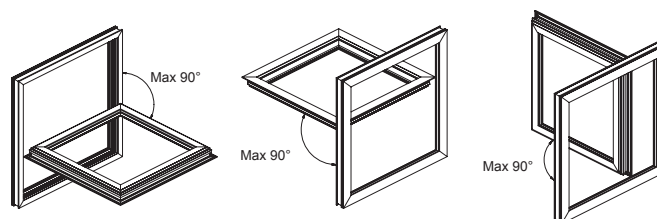
Charnières en acier inox AISI 304 avec patin de friction revêtu en nylon autolubrifiant, régulateur de position en zamak.



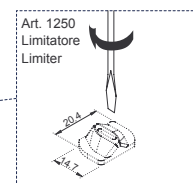
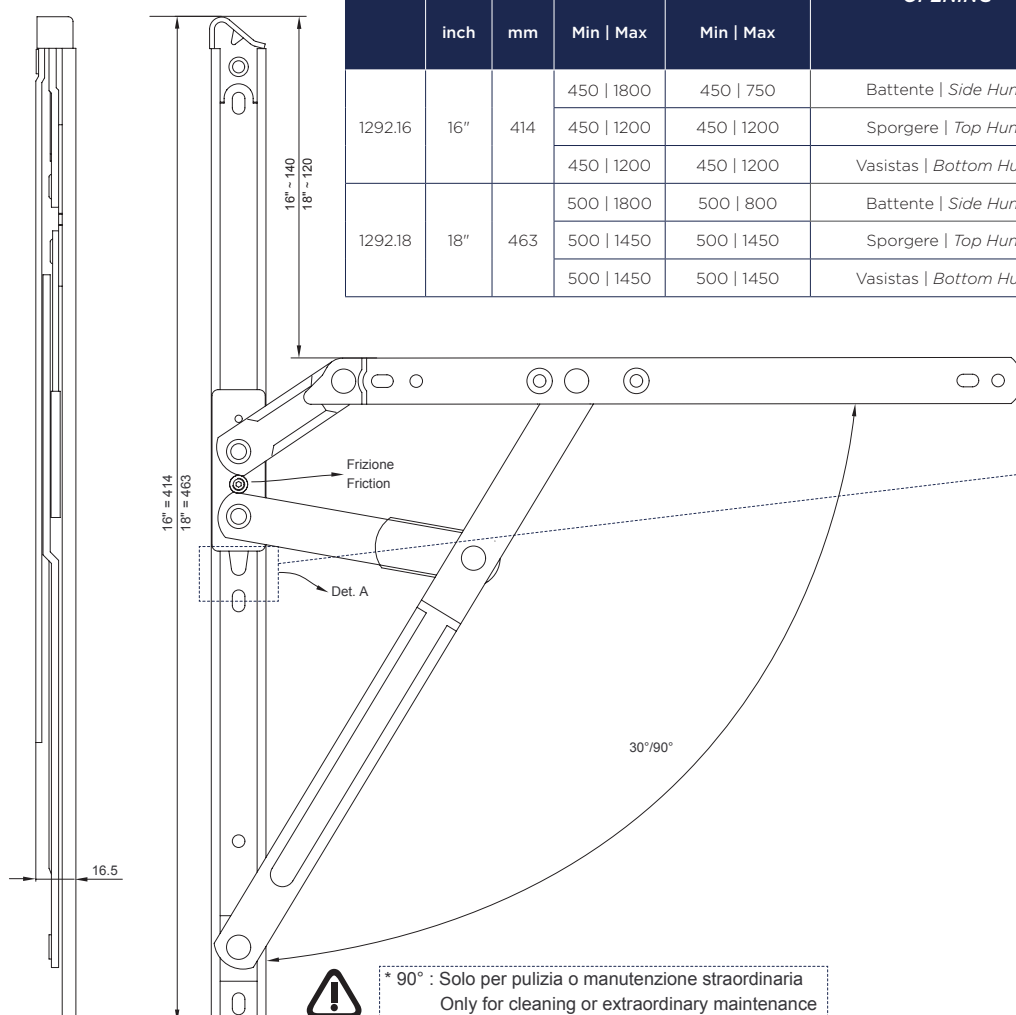
Bisagras de acero inox AISI 304 con cojinete de fricción revestido en nylon autolubricante, regulador de posicionamiento de zamac.



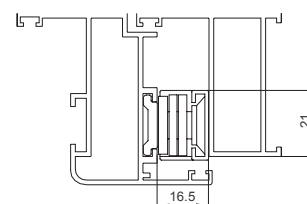
ART.	1292.16   1292.18					
Imballo   Package   Conditionnement   Embalaje	5 Cp					
Finiture disponibili   Available finishes Finitions disponibles   Acabados disponibles	1	2	3	4	5	6



ART.	L		ALTEZZA ANTA SASH HEIGHT	LARGHEZZA ANTA SASH WIDTH	TIPO DI APERTURA OPENING	ANGOLI DI APERTURA OPENING ANGLE		PORTATA MAX LOAD	
	inch	mm	Min   Max	Min   Max		Opening Angle	Opening Limitation		Kg
1292.16	16"	414	450   1800	450   750	Battente   Side Hung	α	30°	A1250 x 6pz.	42
			450   1200	450   1200	Sporgere   Top Hung	α	30°	A1250 x 6pz.	100
			450   1200	450   1200	Vasistas   Bottom Hung	α	30°	A1250 x 6pz.	100
1292.18	18"	463	500   1800	500   800	Battente   Side Hung	α	30°	A1250 x 5pz.	45
			500   1450	500   1450	Sporgere   Top Hung	α	30°	A1250 x 5pz.	100
			500   1450	500   1450	Vasistas   Bottom Hung	α	30°	A1250 x 5pz.	100



Nodo di riferimento  
Cross section reference



\* 90° : Solo per pulizia o manutenzione straordinaria  
Only for cleaning or extraordinary maintenance



# EASY RAPID PLUS

## BRACCI EGRESSO PER INFISSI A SPORGERE, BATTENTE E VASISTAS



Cerniere egresso | Stay hinge for outside, casement and transom opening | Compases para proyectante exterior, batiente y abatible | Compas ouverture extérieure pour ouvertures projetant, frappe et à soufflet



Cerniere in acciaio inox AISI 304 con pattino di frizionamento rivestito in nylon autolubrificante, regolatore di posizionamento in zama.



Hinge in AISI 304 stainless steel with friction shoe covered in self-lubricating nylon, zamak position regulator.



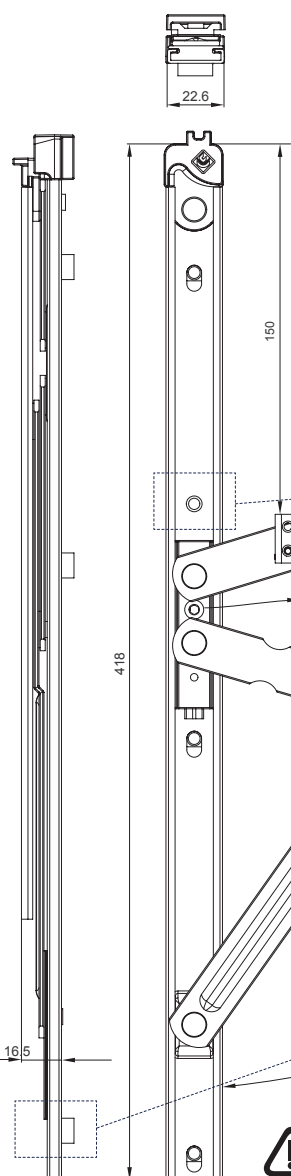
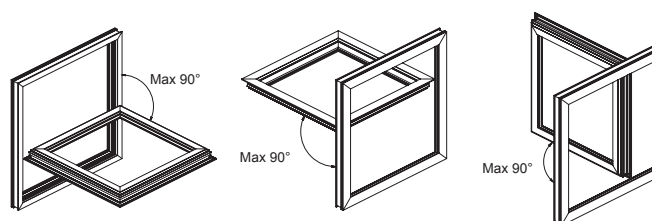
Charnières en acier inox AISI 304 avec patin de friction revêtu en nylon autolubrifiant, régulateur de position en zamak.



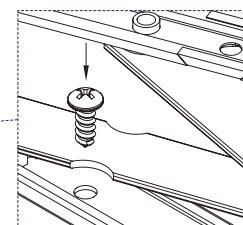
Bisagras de acero inox AISI 304 con cojinete de fricción revestido en nylon autolubricante, regulador de posicionamiento de zamak.



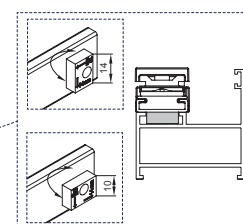
ART.	1233.16					
Imballo   Package   Conditionnement   Embalaje	5 Cp					
Finiture disponibili   Available finishes Finitions disponibles   Acabados disponibles	1	2	3	4	5	6



ART.	L		ALTEZZA ANTA SASH HEIGHT	LARGHEZZA ANTA SASH WIDTH	TIPO DI APERTURA OPENING	ANGOLI DI APERTURA OPENING ANGLE		PORTATA MAX LOAD
	inch	mm				Opening Angle	Opening Limitation	
1233.16	16"	418	450   1800	450   750	Battente   Side Hung	α	30° vite   screw	42
			450   1200	450   1200	Sporgere   Top Hung	α	30° vite   screw	100
			450   1200	450   1200	Vasistas   Bottom Hung	α	30° vite   screw	100

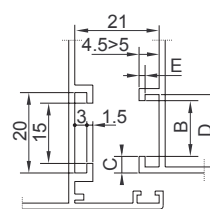


Limitatore  
Limiter



Riferimento nodo Camera Europea  
Euro Groove cross section reference

B	C	D	E
14	4	18	1,5
13,5	3,2	16,8	2,4
12	2,9	15	1,5
10	4,2	14,5	1,5



\* 90° : Solo per pulizia o manutenzione straordinaria  
Only for cleaning or extraordinary maintenance

# EMPIRE

## BRACCIO LIMITATORE DI APERTURA CON CHIAVE DI SGANCIO



Braccio limitatore di apertura per compassi facciata continua con chiave di sgancio | Limiter for curtain wall with release key | Bras limiteur d'ouverture pour compas murs-rideaux avec clef a declic | Compás limitador de apertura para muro cortina con llave de desenganche



Bracci in acciaio inox AISI 304, bloccetto limitatore di apertura in delrin, chiave di sgancio in alluminio pressofuso.



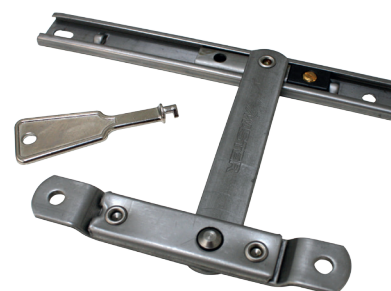
AISI 304 stainless steel arms, Delrin opening limit block, die-cast aluminum release key.



Bras en acier inox AISI 304, bloc limiteur d'ouverture en delrin, clef à déclit en aluminium moulé sous pression.

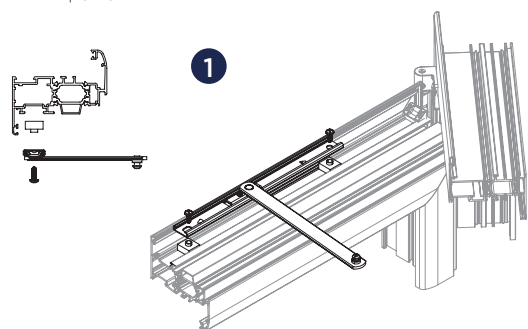


Compases de acero inox AISI 304, bloque limitador de apertura de delrin, llave de desenganche de aluminio.

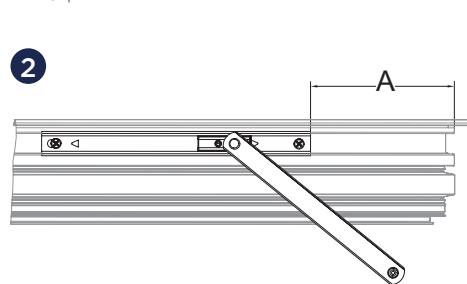


ART.	1203A.6   1203A.8   1203A.10	1203.1
Imballo   Package   Conditionnement   Embalaje	5 Cp	10 PZ
Finiture disponibili   Available finishes Finitions disponibles   Acabados disponibles	1 2 3 4 5 6	1 2 3 4 5 6

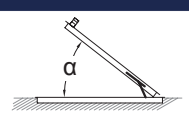
ANTA | SASH



TELAIO | FRAME

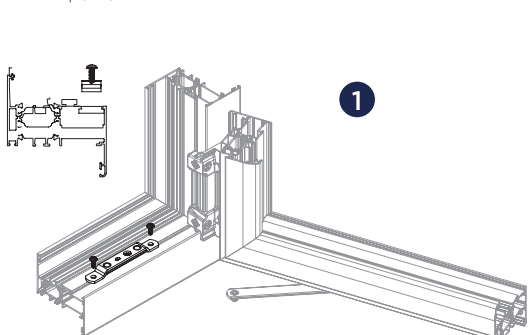


ART.	Lunghezza   Length	A	$\alpha$
1203A.6	6"	90	30°
1203A.8	8"	65	70°
1203A.10	10"	65	90°

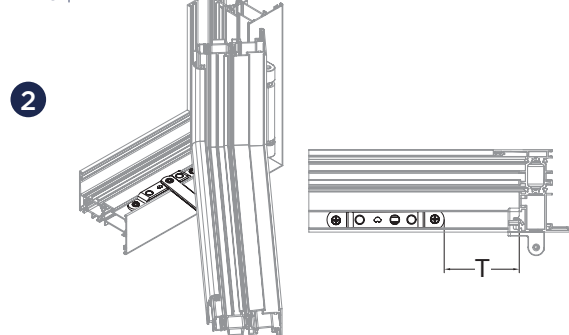


$\alpha=10^\circ$
A
160
210
240

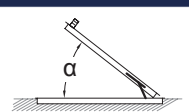
ANTA | SASH



TELAIO | FRAME



ART.	Lunghezza   Length	A	$\alpha$
1203A.6	6"	90	30°
1203A.8	8"	65	70°
1203A.10	10"	65	90°



$\alpha=10^\circ$
A
160
210
240

# STAR

## BRACCIO TELESCOPICO A SCATTO



Braccio telescopico a scatto | Telescopic arm  
 Bras telescopique a declic | Compás telescópico de resorte



Blocchetti di ancoraggio in zama, particolari in acciaio AISI serie 300 (amagnetico).  
 Portata: 80 kg a carico statico.



Zamak anchor blocks, details in AISI series 300 steel (non-magnetic).  
 Load: 80 kg static load.



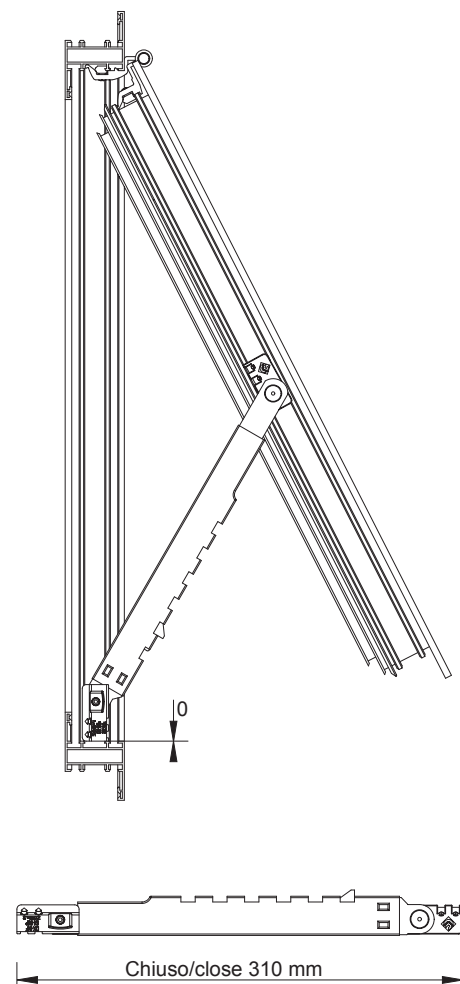
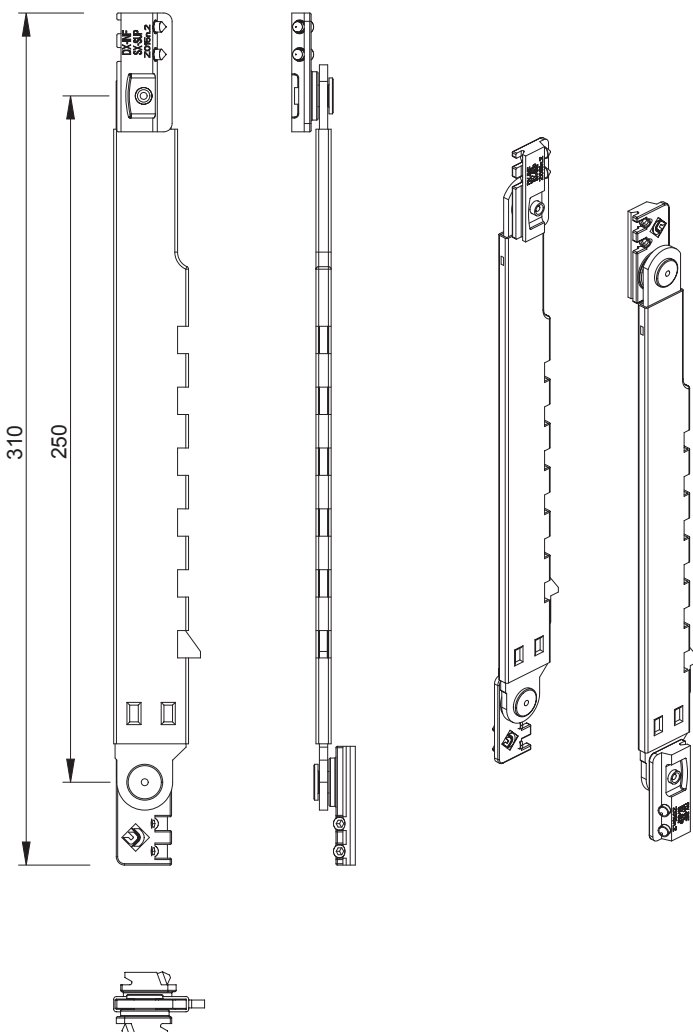
Blocs d'ancrage en zamac, détails en acier AISI série 300 (amagnétique).  
 Portée: 80 kg à charge statique.



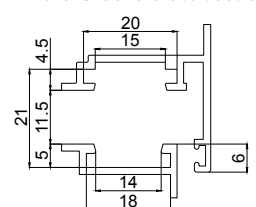
Bloques de anclaje en zamac; bloques de fijación de acero AISI serie 300 (no magnético).  
 Soporta: 80 kg con carga estática.



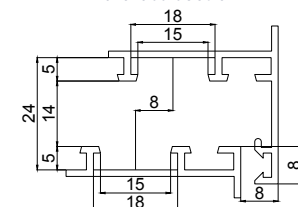
ART.	1210.1   1210.2					
Imballo   Package   Conditionnement   Embalaje	20 Cp					
Finiture disponibili   Available finishes Finitions disponibles   Acabados disponibles	1	2	3	4	5	6



**Art. 1210.1**  
 Nodo Camera Europea  
 Euro Groove cross section

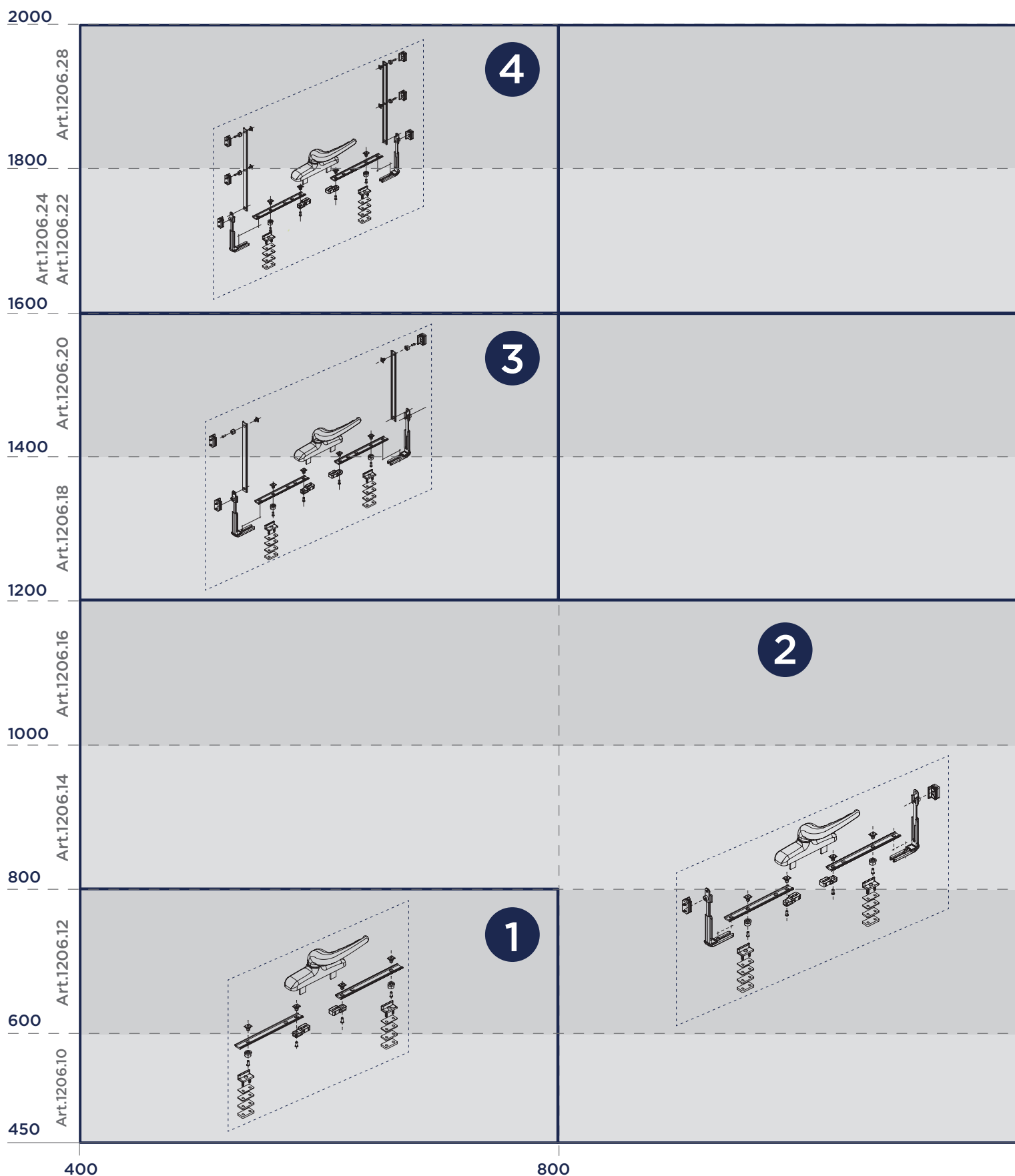


**Art. 1210.2**  
 Nodo ERRE 40  
 ERRE 40 cross section

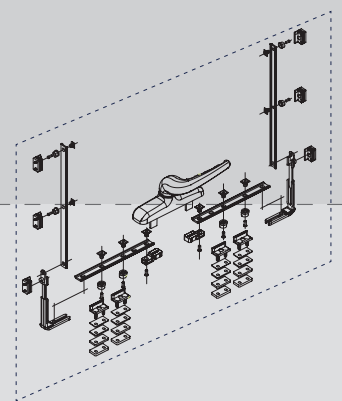


# DIAGRAMMA E CONFIGURAZIONI

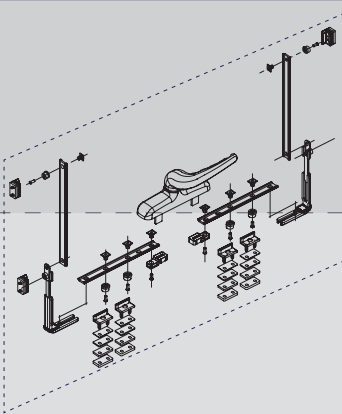
## CONFIGURATION CHART



 N.D.



4



3

1200

1500

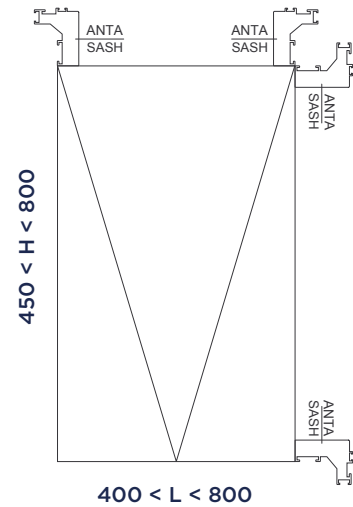
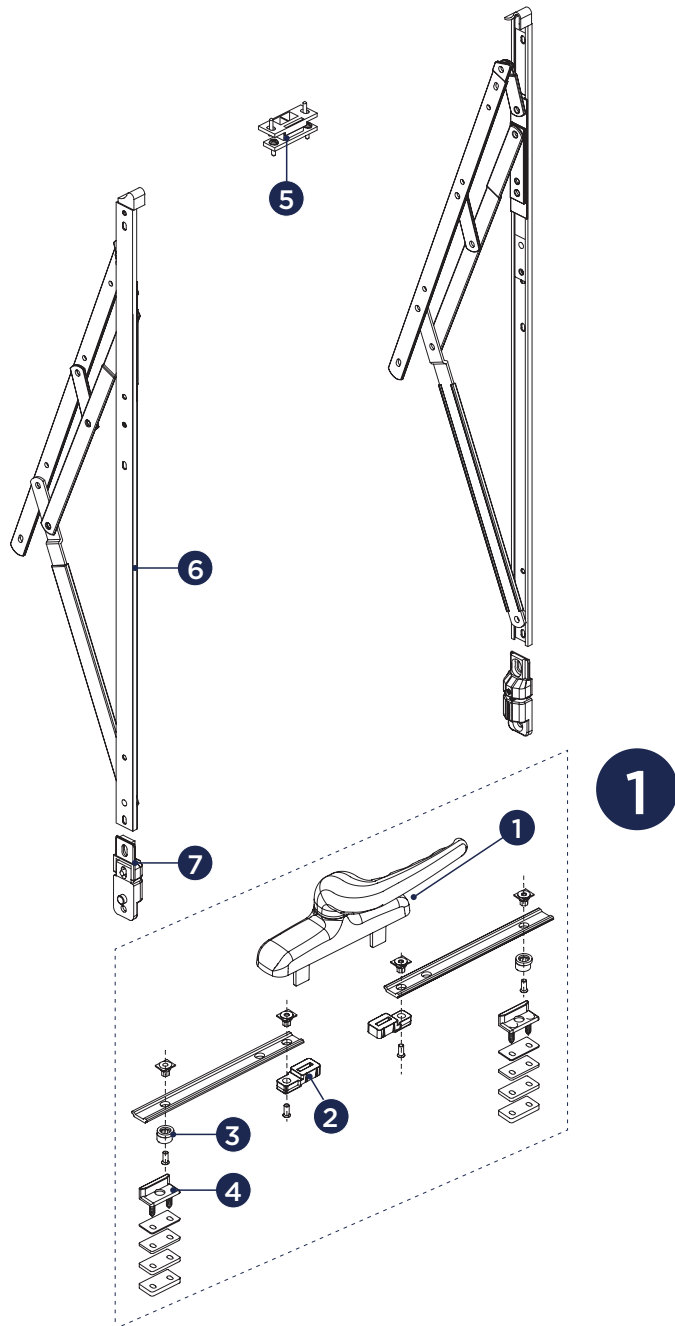
1600

1800

2000

# EMPIRE - CONFIGURATION CHART

Accessori per Facciata continua, configurazione a 3 punti di chiusura  
 Accessories for curtain wall, configuration for 3 locking points

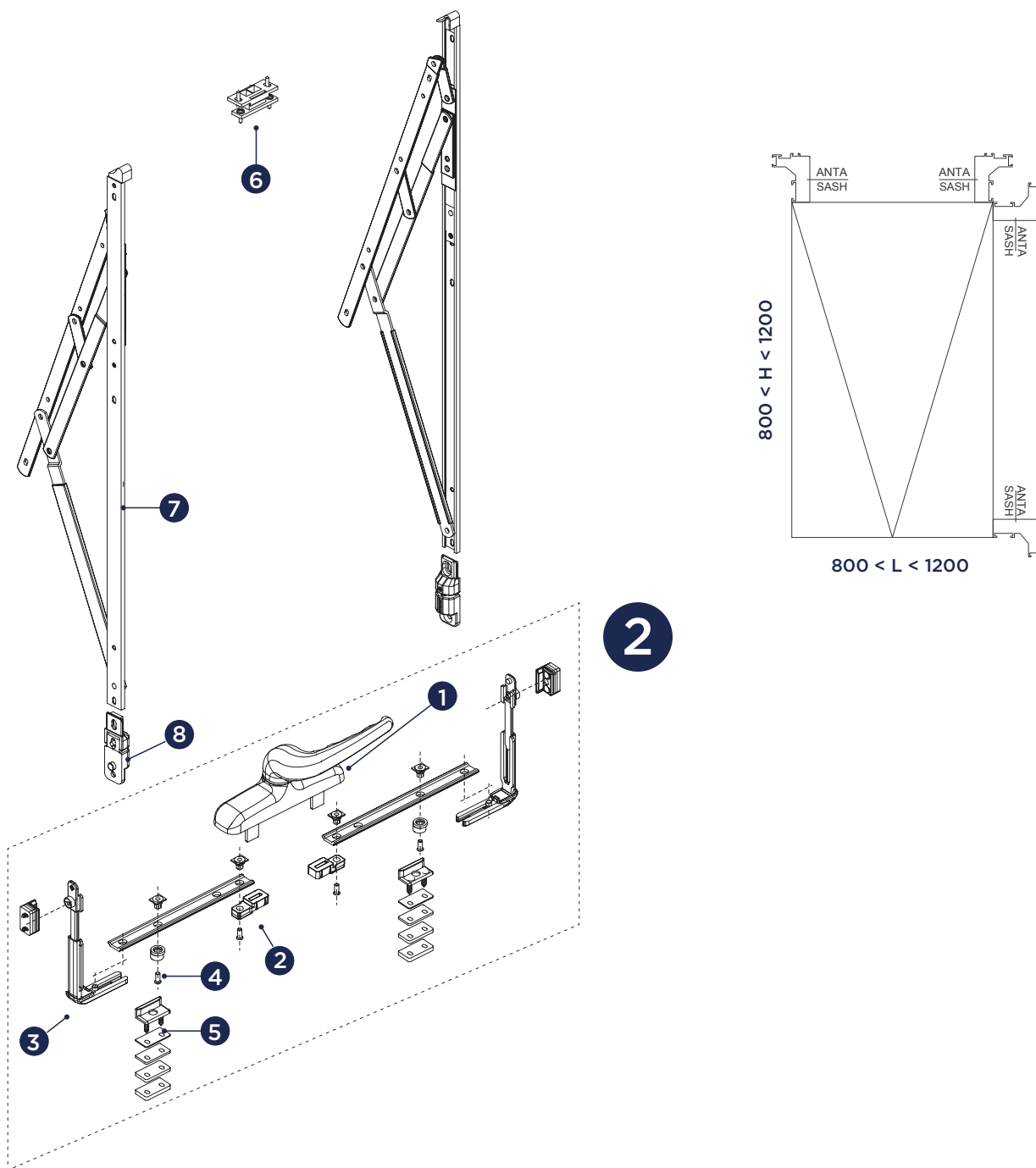


RIF.	ART.	DESCRIZIONE DESCRIPTION	Q.TA'
1	6006.X	Cremonese "Empire" con manico decentrato "Empire" cremone bolt with crank handle	1
2	6406.1	Blocchetti di collegamento astina Connection element	1 Cp
3	4246	Perni di chiusura supplementare regolabile Additional adjustable locking points	2
4	1252.18	Riscontri Counterplate	2

RIF.	ART.	DESCRIZIONE DESCRIPTION	Q.TA'
5	1252.8	Rostro di chiusura supplementare Additional third locking point	1
6	1206.10	450 < H < 600	1 Cp
	1206.12	600 < H < 800	
7	1251.1	Regolatore di posizionamento Position regulator	1 Cp

# EMPIRE - CONFIGURATION CHART

Accessori per Facciata continua, configurazione a 5 punti di chiusura  
 Accessories for curtain wall, configuration at 5 points of closing

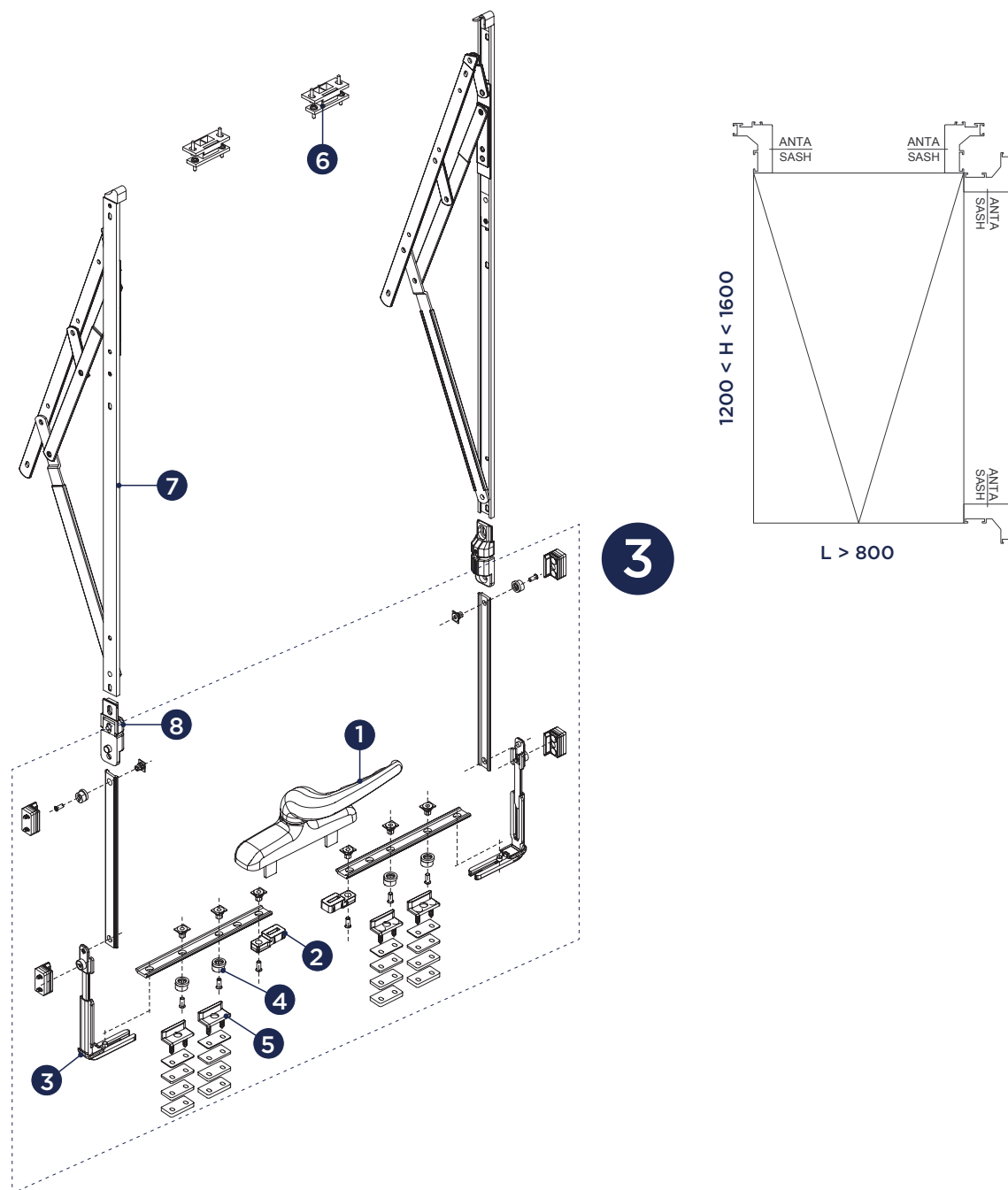


RIF.	ART.	DESCRIZIONE DESCRIPTION	Q.TA'
1	6006.X	Cremonese "Empire" con manico decentrato "Empire" cremone bolt with crank handle	1
2	6406.1	Blocchetti di collegamento astina Connection element	1 Cp
3	1252.12	Rinvio d'angolo Corner return	2
4	4246	Perni di chiusura supplementare regolabile Additional adjustable locking points	2

RIF.	ART.	DESCRIZIONE DESCRIPTION	Q.TA'
5	1252.18	Riscontri Counterplate	4
6	1252.8	Rostro di chiusura supplementare Additional third locking point	1
7	1206.14	800 < H < 1000	1 Cp
	1206.16	1000 < H < 1200	
8	1251.1	Regolatore di posizionamento Position regulator	1 Cp

# EMPIRE - CONFIGURATION CHART

Accessori per Facciata continua, configurazione a 10 punti di chiusura  
 Accessories for curtain wall, configuration at 10 points of closing



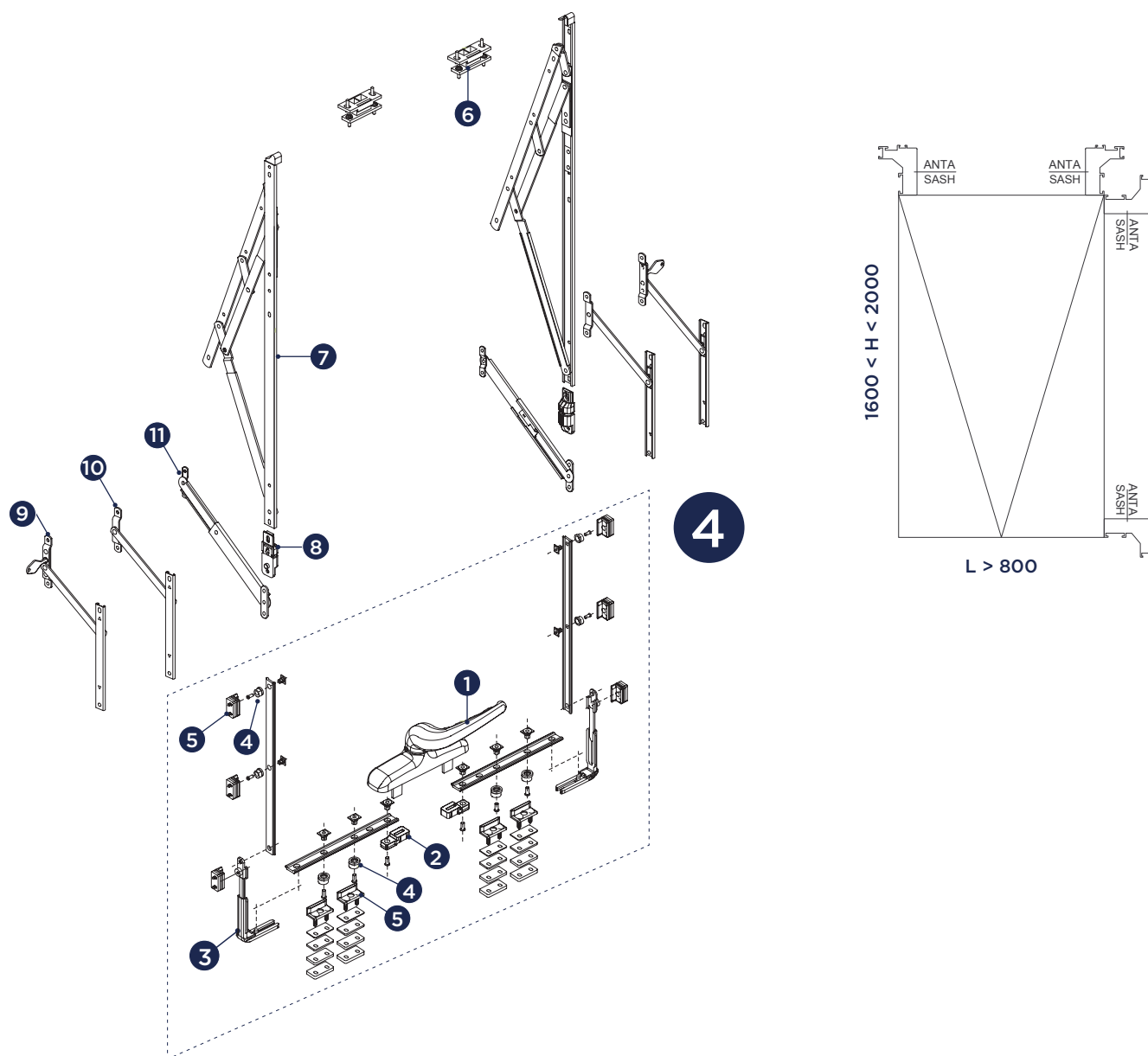
RIF.	ART.	DESCRIZIONE DESCRIPTION	Q.TA'
<b>1</b>	6006.X	Cremonese "Empire" con manico decentrato "Empire" cremonese bolt with crank handle	1
<b>2</b>	6406.1	Blocchetti di collegamento astina Connection element	1 Cp
<b>3</b>	1252.12	Rinvio d'angolo Corner return	2
<b>4</b>	4246	Perni di chiusura supplementare regolabile Closing pin extra adjustable	6

RIF.	ART.	DESCRIZIONE DESCRIPTION	Q.TA'
<b>5</b>	1252.18	Riscontri Counterplate	8
<b>6</b>	1252.8	Rostro di chiusura supplementare Additional third locking point	2
<b>7</b>	1206.18	1200 < H < 1400	1 Cp
	1206.20	1400 < H < 1600	
<b>8</b>	1251.1	Regolatore di posizione Position regulator	1 Cp



# EMPIRE - CONFIGURATION CHART

Accessori per Facciata continua, configurazione a 12 punti di chiusura  
 Accessories for curtain wall, configuration at 12 points of closing



RIF.	ART.	DESCRIZIONE DESCRIPTION	Q.TA'
1	6006.X	Cremonese "Empire" con manico decentrato "Empire" cremonese bolt with crank handle	1
2	6406.1	Blocchetti di collegamento astina Connection element	1 Cp
3	1252.12	Rinvio d'angolo Corner return	2
4	4246	Perni di chiusura supplementare regolabile Closing pin extra adjustable	8
5	1252.18	Riscontri Counterplate	10
6	1252.8	Rostro di chiusura supplementare Additional third locking point	1

RIF.	ART.	DESCRIZIONE DESCRIPTION	Q.TA'
7	1206.24	1600 < H < 1800	1 Cp
	1206.28	1800 < H < 2000	
8	1251.1	Regolatore di posizionamento Position regulator	1 Cp
9*	1203A.X	Braccio limitatore di apertura con chiave di sgancio Limiter for opening with relese key	2
10*	1205.3	Braccio limitatore frizionato Friction limiter arm	2
11*	1204.X	Braccio limitatore a scatto Friction limiter arm	2
* Scelta del braccio limitatore in funzione dell'applicazione * Selection of the limiting arm according to the application			

# Finiture

## Finishes

05

### 1 Finitura grezza

#### Mill Finish

Nessun trattamento di verniciatura.  
Unpainted

### 2 Finiture Tek - Speciali - Pvd

#### Tek - Special - Pvd Finishes

- Finitura vintage "old": bronzo, argento; • Trattamento goldfinish: oro, inox, inox satinato; • Finiture speciali: effetto titanio; • Pvd: ottone pvd, inox satinato pvd.
- "Old" vintage finishes: bronze, silver; • Goldfinish treatment: gold, inox, satin inox; • Special finishes: titanium
- Pvd: pvd brass , pvd satin inox.

### 3 Ossidazione anodica

#### Anodized colours

- Oro lucido, inox satinato, argento, bronzo; • Argento satinato, argento lucido.
- Shiny gold, satin inox, silver, bronze; • Satin silver, shiny silver.

### 4 Verniciatura (RAL1)

#### Painting (RAL1)

RAL 9010 (bianco) - RAL 9010op (bianco opaco) - RAL 1013 (avorio) - RAL 1013OP (avorio opaco) - AVOR (avorio scuro) - NERO OPACO.  
RAL 9010 (white) - RAL 9010op (matte white) - RAL 1013 (ivory) - RAL 1013OP (matte ivory) - AVOR (dark ivory) - MATTE BLACK.

### 5 Verniciatura in altri colori (RAL2)

#### Painting in others colours (RAL2)

RAL 7001 grigio argento - RAL 6360 verde gotico - bronzo - RAL 9003 bianco - RAL 9001 avorio chiaro - RAL 3976 - marrone Gotico - marrone raggr. - RAL 8017 marrone - RAL 9005 nero - argento - verde scuro raggr. - RAL 6005 verde RAL 8019 marrone grigio - RAL 9420 grigio gotico - Marrone opaco - RAL 9006 argento - inox - RAL 6005OP Verde Opaco - VGRAY (Grigio Metallico).

RAL 7001 silver grey - RAL 6360 gothic green - bronze - RAL 9003 white - RAL 9001 lighr ivory - RAL 3976 - gothic brown - wrinkled brown - RAL 8017 brown - RAL 9005 black - silver - dark wrinkled green - RAL 6005 green - RAL 8019 grey brown - RAL 9420 gothic grey - mat brown - RAL 9006 silver - inox - RAL 6005OPmat green - VGRAY (metal grey).

### 6 Verniciatura Speciale

#### Special Painting

argento\*, bronzo\*  
silver\*, bronze\*

\*Effetto ossidato  
\*Anodized effect



