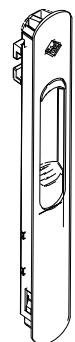


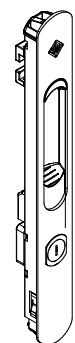
IT "INNER CLICK" Maniglie ad incasso ad aggancio rapido

EN "INNER CLICK" Fast mounting Embedded Handle



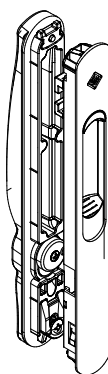
- A6450.1** - Automatica - Lavorazione 143x19.5
- A6451.1** - Automatica - Lavorazione 165x19.5
- A6452.1** - Automatica - Lavorazione 187x19.5
- A6452** - Manuale - Lavorazione 187x19.5

- IT** "INNER CLICK" Maniglia ad incasso ad aggancio rapido senza viti di fissaggio senza Kit di chiusura
- EN** "INNER CLICK" Fast Mounting Embedded Handle
- FR** "INNER CLICK" Poignee a Emboiter a Accrochage Rapide
- ES** "INNER CLICK" Manilla con Cierre Embutido de Agarre Rapido



- A6452.3** - Lavorazione 187x19.5

- IT** "INNER CLICK" Maniglia ad incasso singola con cilindro, ad aggancio rapido senza viti di fissaggio, senza Kit di chiusura
- EN** "INNER CLICK" Fast Mounting Embedded Handle with safety cylinder
- FR** "INNER CLICK" Poignee a Emboiter a Accrochage Rapide - avec cylindre
- ES** "INNER CLICK" Manilla con Cierre Embutido de Agarre Rapido - con cilindro



- A6452.13** - Lavorazione 187x19.5

- IT** "INNER CLICK" Maniglia ad incasso doppia con cilindro di sicurezza, senza Kit di chiusura
- EN** "INNER CLICK" double Embedded Handle with safety cylinder
- FR** "INNER CLICK" Poignee Double a Emboiter
- ES** "INNER CLICK" Manilla con Cierre Embutido Doble

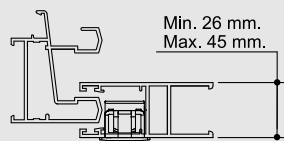


- A6495.11** - Per lavorazione 187x19.5

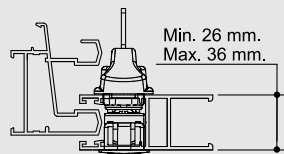
- IT** "INNER CLICK" Maniglia di traino esterna
- EN** "INNER CLICK" Handle to pull external
- FR** "INNER CLICK" Poignee de tirage exterieur
- ES** "INNER CLICK" Manilla externa

INGOMBRI / DIMENSIONS

**Maniglia singola
Single handle**

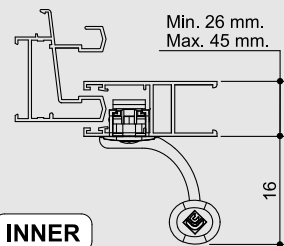


**Maniglia doppia
Double handle**



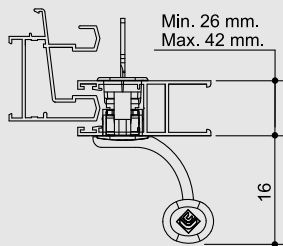
INNER CLICK

**Maniglia singola
Single handle**



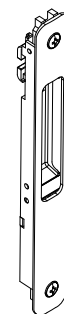
INNER

**Maniglia doppia
Double handle**



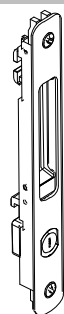
IT "INNER" Maniglie ad incasso

EN "INNER" Embedded Handle



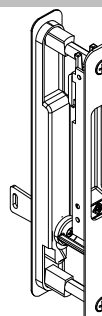
- A6431 / A6435** - Lavorazione 143x19.5
- A6434 / A6436** - Lavorazione 165x19.5
- A6432 / A6438** - Lavorazione 187x19.5
- A6433 / A6439** - Lavorazione 205x19.5

- IT** "INNER" Maniglia ad incasso singola senza cilindro
- EN** "INNER" Embedded Handle without safety cylinder
- FR** "INNER" Poignee Emboiter
- ES** "INNER" Manilla con Cierre Embutido



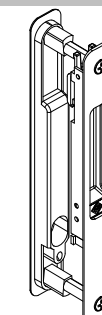
- A6446** - Lavorazione 165x19.5
- A6448** - Lavorazione 187x19.5
- A6449** - Lavorazione 205x19.5

- IT** "INNER" Maniglia ad incasso singola con cilindro, senza Kit di chiusura
- EN** "INNER" Embedded Handle with safety cylinder
- FR** "INNER" Poignee Emboiter
- ES** "INNER" Manilla con Cierre Embutido



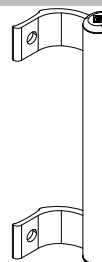
- A6458** - Lavorazione 187x19.5

- IT** "INNER" Maniglia ad incasso doppia con cilindro di sicurezza, senza Kit di chiusura
- EN** "INNER" double Embedded Handle with safety cylinder
- FR** "INNER" Poignee Double a Emboiter
- ES** "INNER" Manilla con Cierre Embutido Doble



- A6468** - Lavorazione 187x19.5

- IT** "INNER" Maniglia ad incasso doppia senza cilindro, senza Kit di chiusura
- EN** "INNER" Double Embedded Handle without safety cylinder
- FR** "INNER" Poignee Double Emboiter
- ES** "INNER" Manilla con Cierre Embutido Doble



- A6490** - Per "INNER" con lavorazione 143x19.5
- A6491** - Per "INNER" con lavorazione 165x19.5
- A6493** - Per "INNER" con lavorazione 187x19.5
- A6494** - Per "INNER" con lavorazione 205x19.5

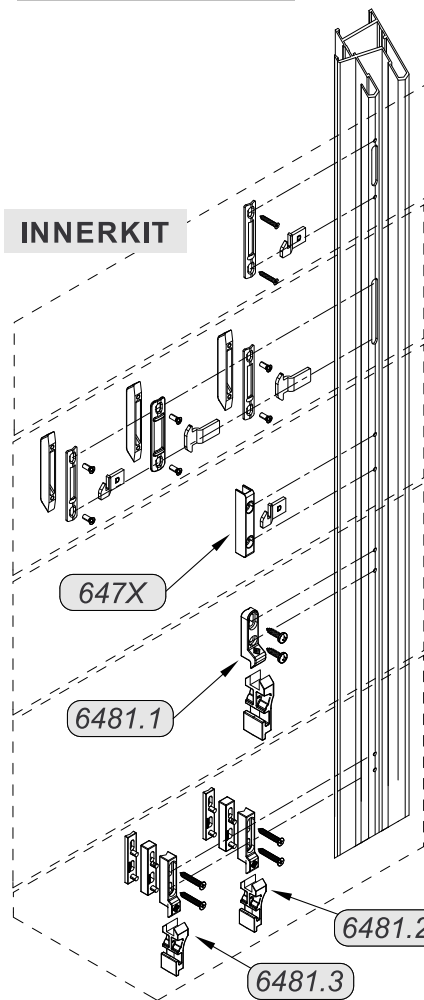
- IT** Maniglia di traino
- EN** Pull Handle
- FR** Poignee de Tirage
- ES** Manilla Tiradora



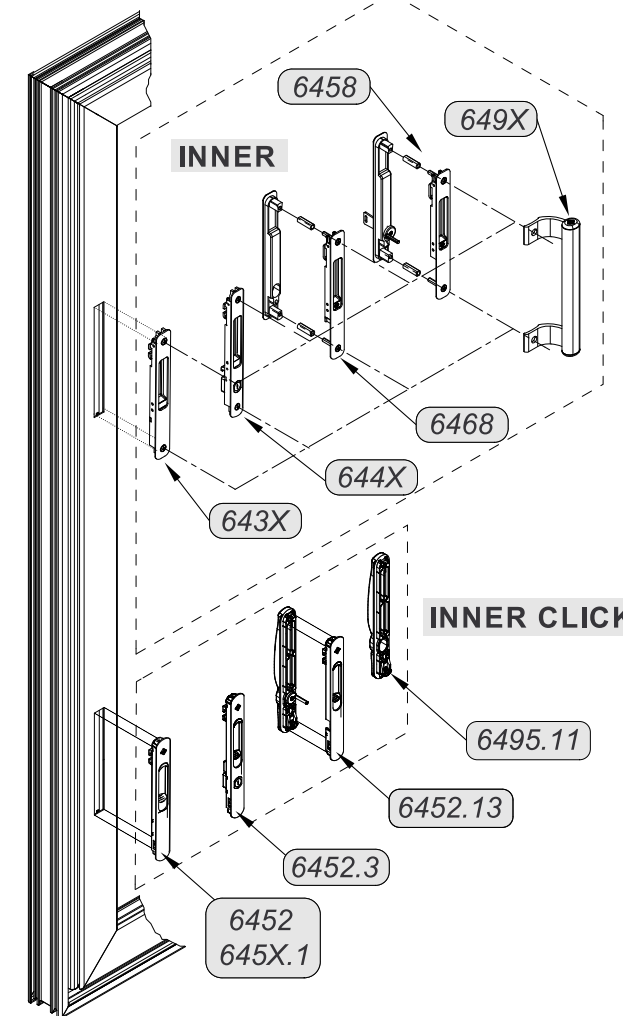
Inner Inner Click

Maniglie ad incasso - Per sistemi scorrevoli
Embedded Handle - For sliding system

TELAIO/FRAME



ANTA/SASH



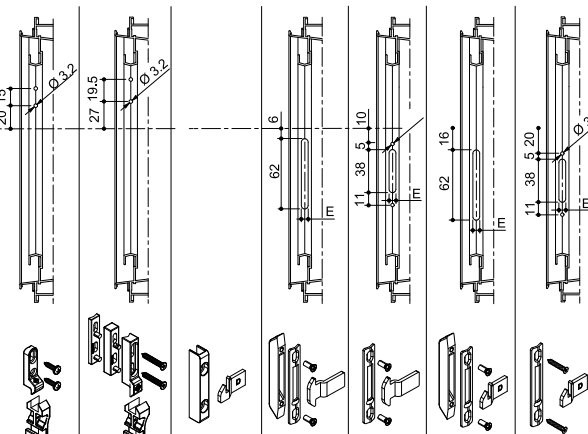
Adattabilità su profili in alluminio / Adaptability on aluminium profiles

Serie / Series	C	E	Kit Art.		
Abhtal Runner	11	6	6480	6480T.1	6481.1
Alexia 650 S / 650 S.T.	17	8	6479	6479T.1	6481.2
Alpha 560/S	12	6	6480	6480T.1	6481.1
Ayrton 60	13.5	6	6480	6480T.1	6481.1
Ayrton 60 T.T.	14.5	6	6479	6479T.1	6481.2
Classic Slide 650 S / 650 S.T.	17	8	6479	6479T.1	6481.2
D 60/S	12	6	6480	6480T.1	6481.1
Domal 40/S	13.5	6	6480	6480T.1	6481.1
Domal Slide 56 (PR15188)	27.5	8	6470B	-----	-----
Domal Slide 56 (PR26255)	14	8	6470	6470T.1	6481.1
Domal Slide 80 / PA 80	13	8	6486	-----	6481.3
Domal Slide 84	13	8	6470A	-----	6481.1
Erre 50/S (900173 - 900247)	24	-	6476	-----	-----
Ekos 60 STH	16	8	6479	6479T.1	6481.2
Export 60 S	12.5	6	6480	6480T.1	6481.1
Gold 650 S / 650 S.T.	16.5	8	6479	6479T.1	6481.2
Monaco	16	6	6479	6479T.1	-----
NC 60 INT.	13.5	6	6480	6480T.1	6481.1
NC 60 STH	15	-	6487.1	-----	-----

Serie / Series	C	E	Kit Art.		
Parigi	10	6	6480	6480T.1	-----
PE 60 Slide	12.5	6	6480	6480T.1	6481.1
PE 70 Slide/PE 70 TT Slide	15	8	6470	6470T.1	6481.1
Skelt 60	11.5	6	6480	6480T.1	6481.1
Skelt 60 Super (anta da 32mm)	12	8	6474	-----	6481.1
Skelt 60 Super (anta da 36mm)	16	8	6479.2	6479T.2	6481.1
Skelt 60 Super TH	16	8	6479.2	6479T.2	6481.2
Skelt 70	11.5	6	6474	-----	6481.1
Sliding 600 (binari chiusi)	16	8	6470A	-----	6481.1
Triall.co 65-90/65 TT-90TT	16.5	8	6479	6479T.1	6481.2
Start 900S/900 STT	16.5	8	6479	6479T.1	6481.2
Atlantis 78 S/78 STT	11.5	8	6486	-----	6481.3
PLATHINA 78S	14	-	-----	-----	6481.3
SC70	12	6	6480	6480T.1	6481.1
Eku Vuerre 100 STH	14	8	6486	-----	6481.3
Win 65 / TT	14	8	6470	6470T.1	6481.1
Win 90S / TT	14	8	6486	-----	6481.3

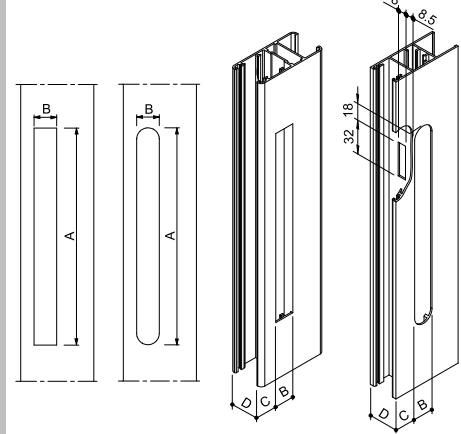
LAVORAZIONI / MACHINING

IT LAVORAZIONE PROFILO TELAIO
EN WINDOWS FRAME PROFILE MACHINING



Art.	Art.	Art.	Art.	Art.
6481.1	6481.2	6471 - 6472	6470T.1 - 6480T.1	6431-6434-6430
	6481.3	6476 - 6478	6479T.1 - 6479T.2	6432
		6433		6470 - 6473
				6474 - 6477
				6479 - 6480

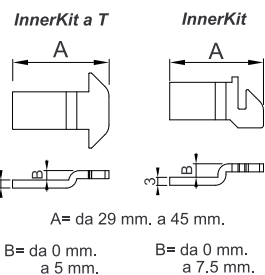
IT LAVORAZIONI PROFILO ANTA
EN WINDOWS SASH PROFILE MACHINING



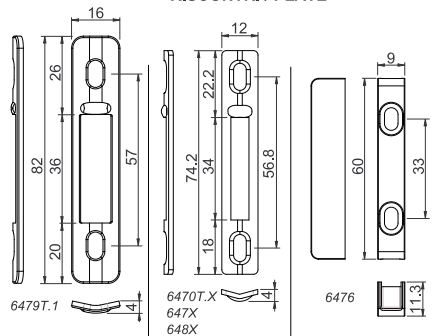
Art.	A	B
6431-6435-6450,1	143	
6434-6436-6446-6451,1	165	
6432		19,5
6430-6430-6439-6448-6452	187	
6452,1-6452,3-6452,13-6495,11		
6439-6449	205	

IT Kit di chiusura per maniglie INNER e INNERCLICK
EN Closing Kit for INNER and INNERCLICK handles

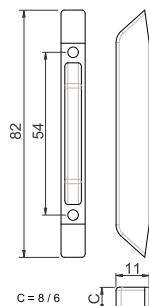
NASELLI / HOOK



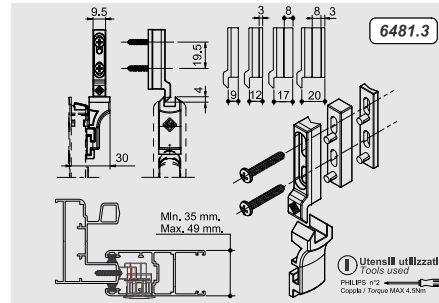
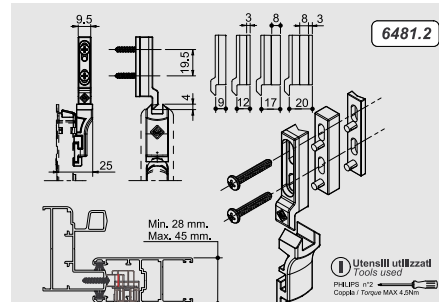
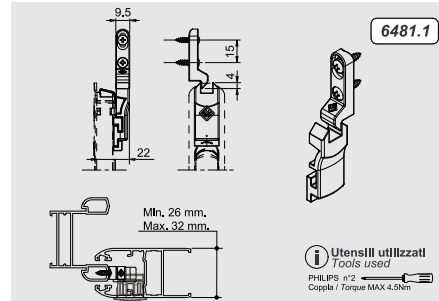
RISCONTRI / PLATE



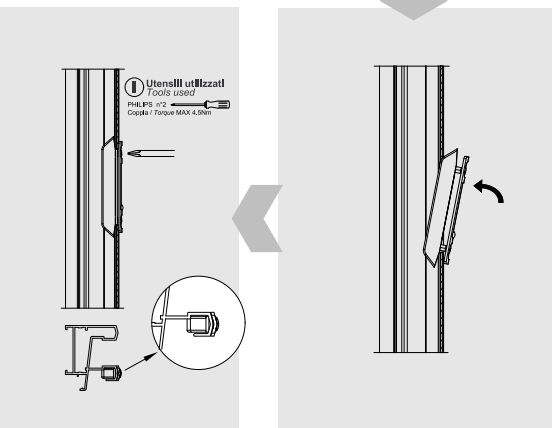
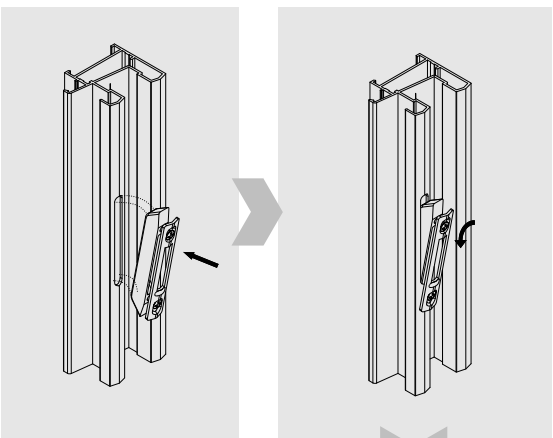
OCCLUSORE / COUNTERPLATE



IT Kit di chiusura per maniglie INNER e INNERCLICK
EN Closing Kit for INNER and INNERCLICK handles

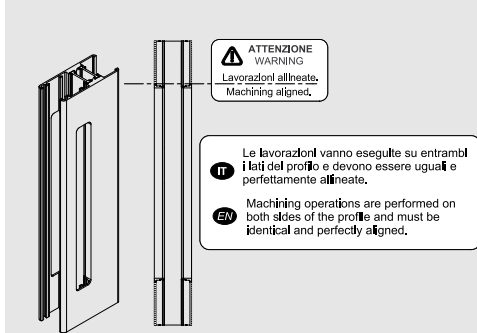
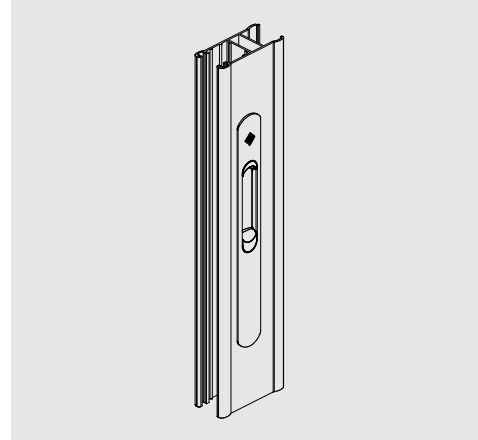
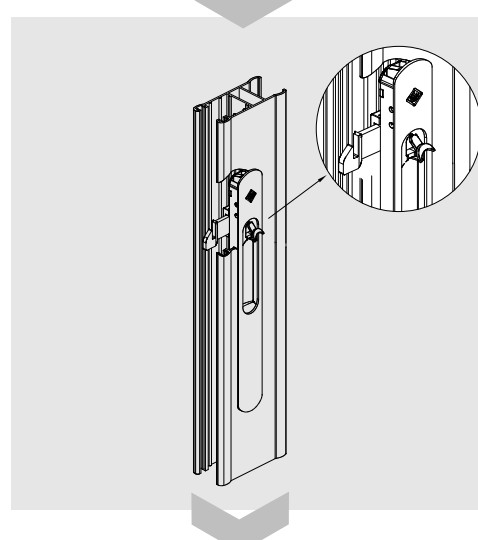
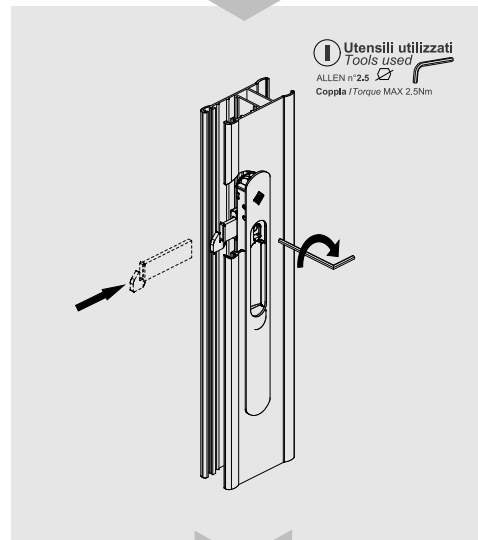
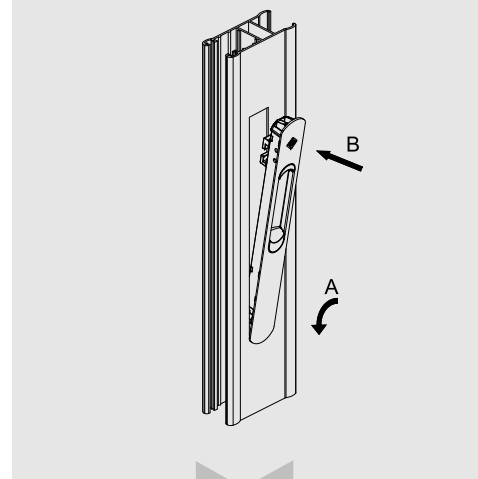


IT Montaggio kit di chiusura per maniglie INNER e INNERCLICK con occlusore in zama
EN Mounting closing kit for INNER and INNERCLICK handles with zamak counterplate

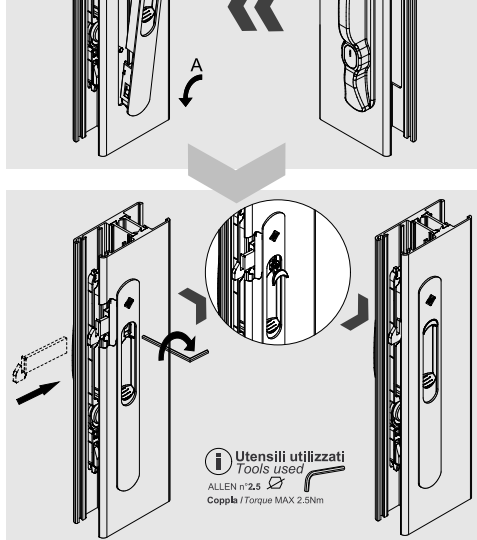
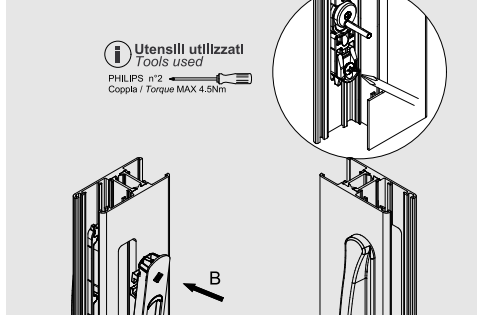
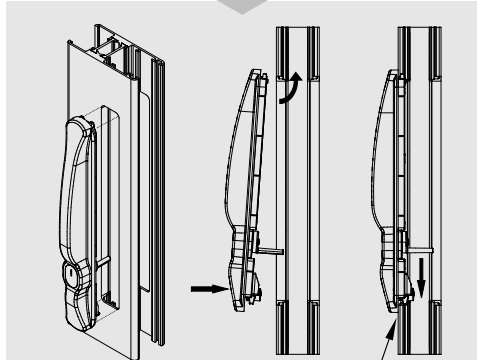
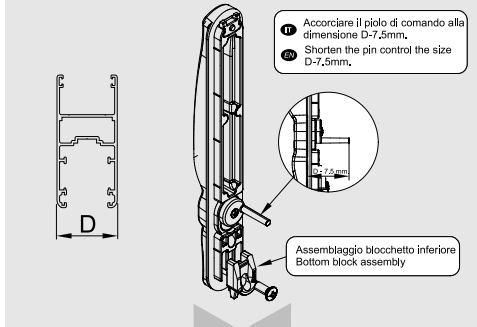


MONTAGGIO / MOUNTING

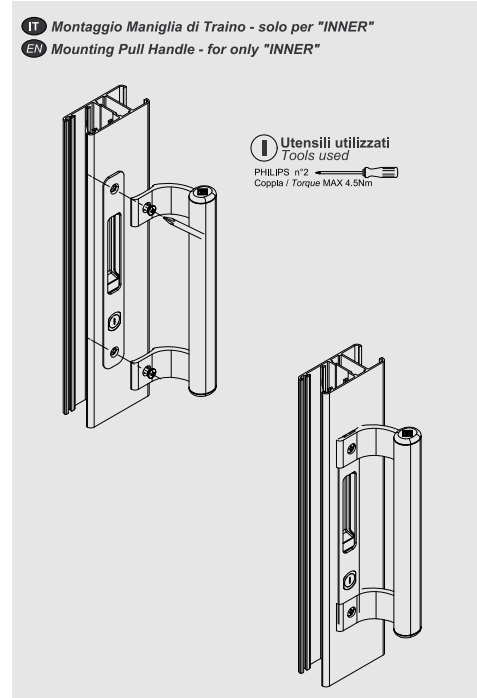
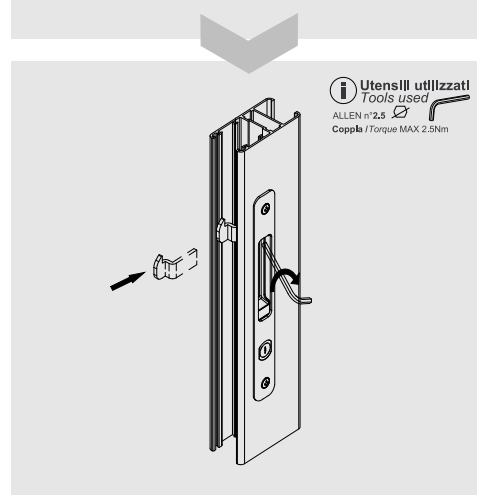
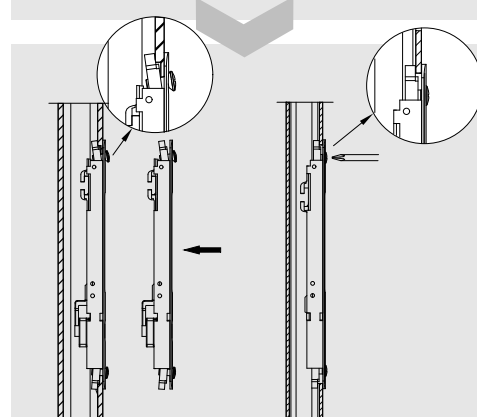
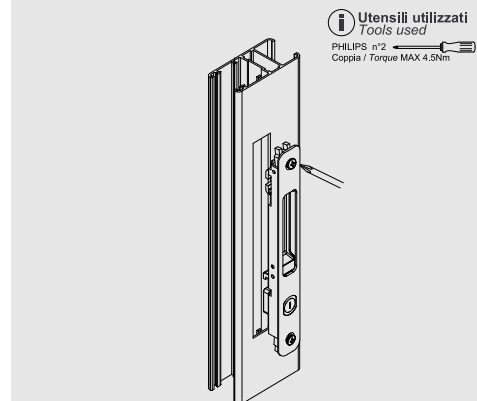
IT MONTAGGIO "INNER CLICK" - Versione singola
EN MOUNTING "INNER CLICK" - Embedded Handle Single Version



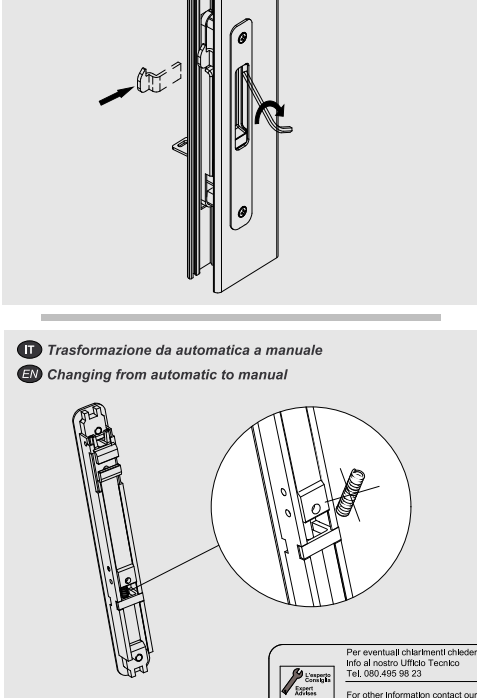
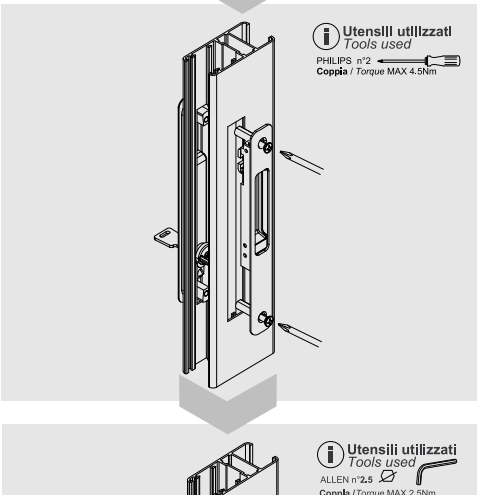
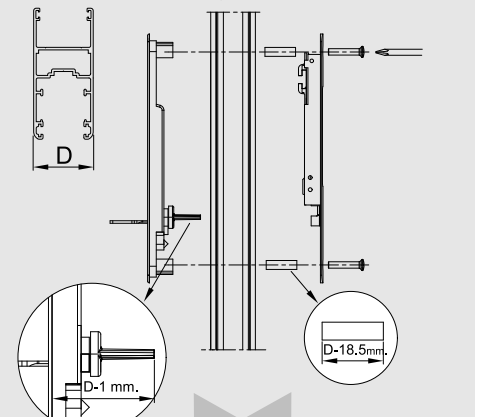
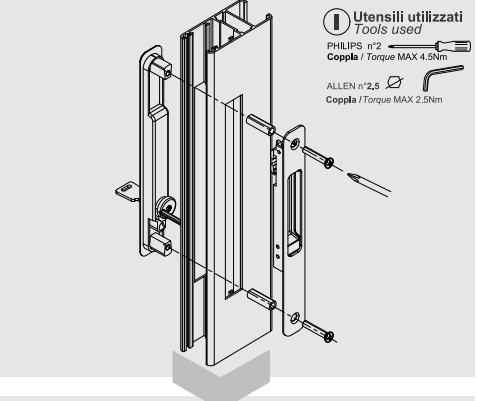
IT Preparazione della maniglia esterna
EN Preparation of the external handle



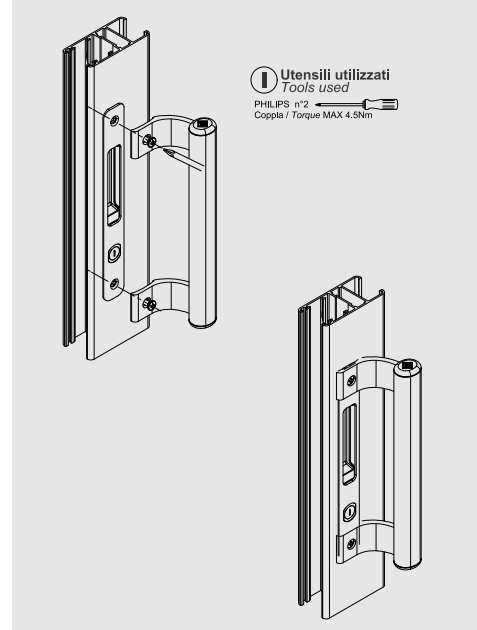
IT MONTAGGIO "INNER" - Versione singola
EN MOUNTING "INNER" - Embedded Handle Single Version



IT MONTAGGIO "INNER" - Versione doppia
EN MOUNTING "INNER" - Embedded Handle Double Version



IT Montaggio Maniglia di Traino - solo per "INNER"
EN Mounting Pull Handle - for only "INNER"



IT Trasformazione da automatica a manuale
EN Changing from automatic to manual

