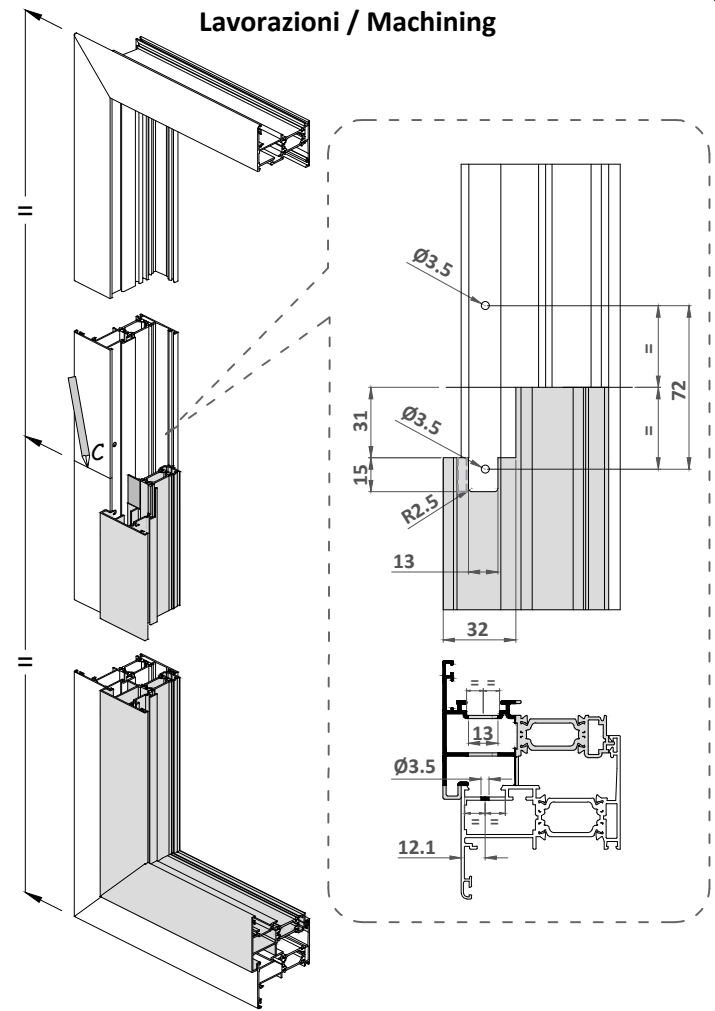
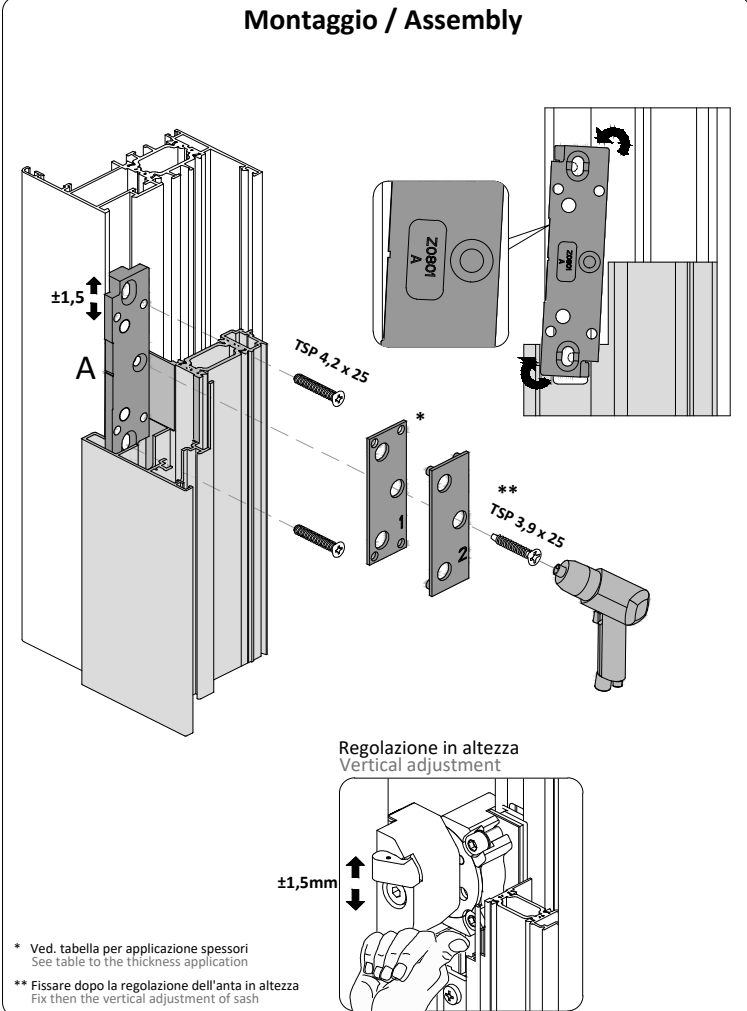


Telaio - Frame

Lavorazioni / Machining



Montaggio / Assembly



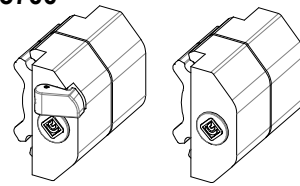
SCHEDA TECNICA DI MONTAGGIO

EasyPivot

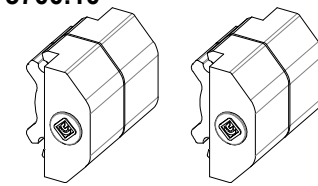
<http://www.masteritaly.com>

CERNIERA A FRIZIONE PER FINESTRE BILICO ORIZZONTALI E VERTICALI
 FRICTION HINGE FOR HORIZONTAL AND VERTICAL PIVOT WINDOWS
 Per Camera Europea - For CE groove

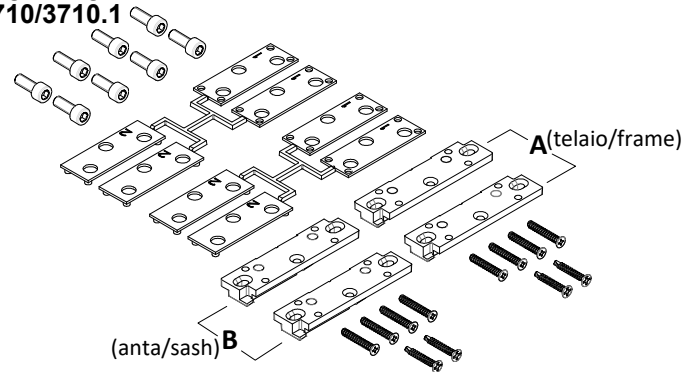
Kit cerniere orizzontale con blocco
 Hinges kit to horizontal with lock
3700



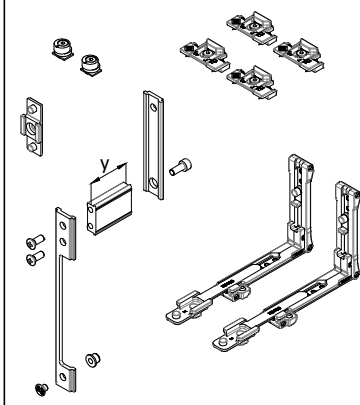
Kit cerniere verticale senza blocco
 Hinges kit to vertical without lock
3700.10



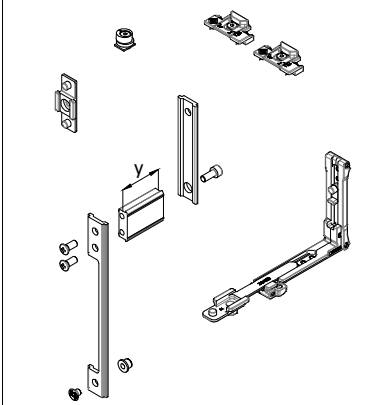
Kit fissaggio cerniere
 Hinges fixing kit
3710/3710.1



Kit chiusura perimetrale
 Multi-point locking kit
3710.11 / 3710.12 / 3710.13

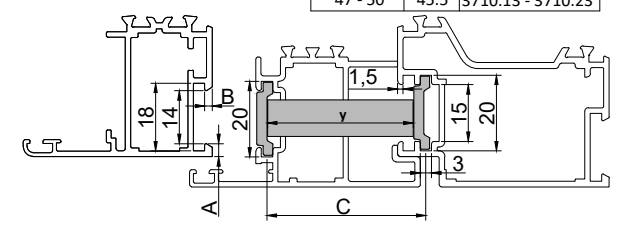


Kit chiusura supplementare
 Additional multi-point locking kit
3710.21 / 3710.22 / 3710.23



Riferimento nodo Camera Europea
 Euro groove section referment

A	B	C	y	Kit chiusure
3.5	2	38 - 41	35.5	3710.11 - 3710.21
4	1.5 - 1.8 - 2	41.5 - 43	38.5	3710.10 - 3710.20
		43.5 - 46.5	41.5	3710.12 - 3710.22
		47 - 50	45.5	3710.13 - 3710.23

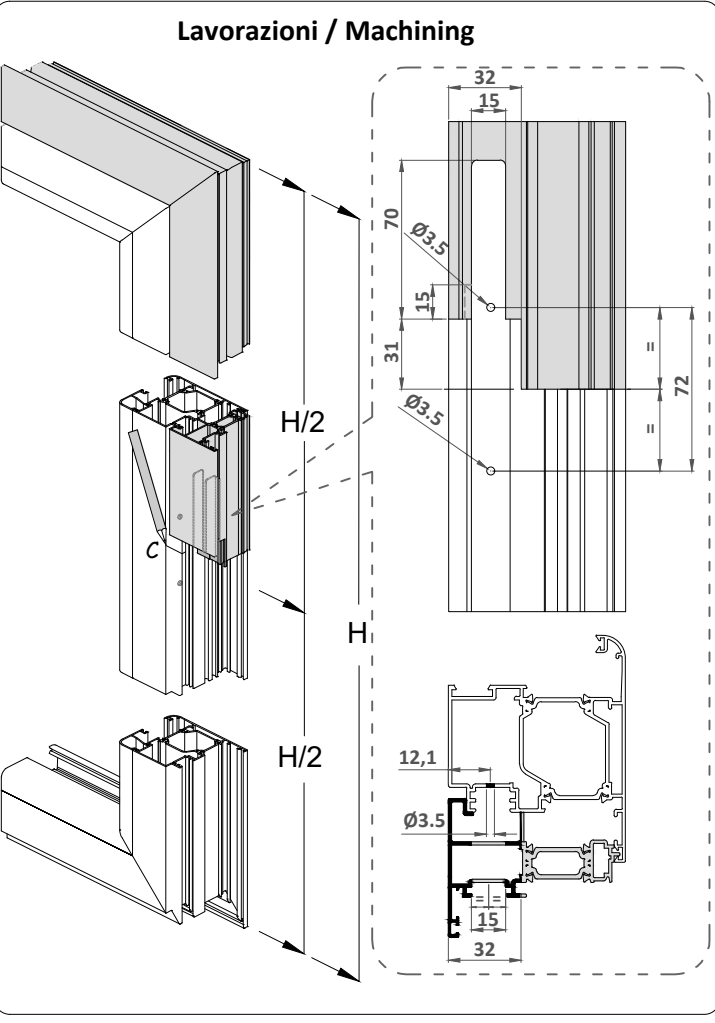


Norma di riferimento Europea UNI EN 13126-1:2006 / 13126-9:2006
 Certified according to European Standard UNI EN 13126-1:2006 / 13126-9:2006

Hor.	5	120	0	1	4	-	9/1	1400x1400
Ver.	5	80	0	1	4	-	9/3	1400x1400
Categoria d'uso	Durabilità	Massa	Resistenza fuoco	Sicurezza di utilizzo	Resistenza alla corrosione	Resistenza effrazione	Applicazione	Dimensione di prova
Category of use	Durability	Mass	Fire resistance	Safety in use	Corrosion resistance	Security	Applicable part	Test size

Anta - Sash

Lavorazioni / Machining



Montaggio / Assembly

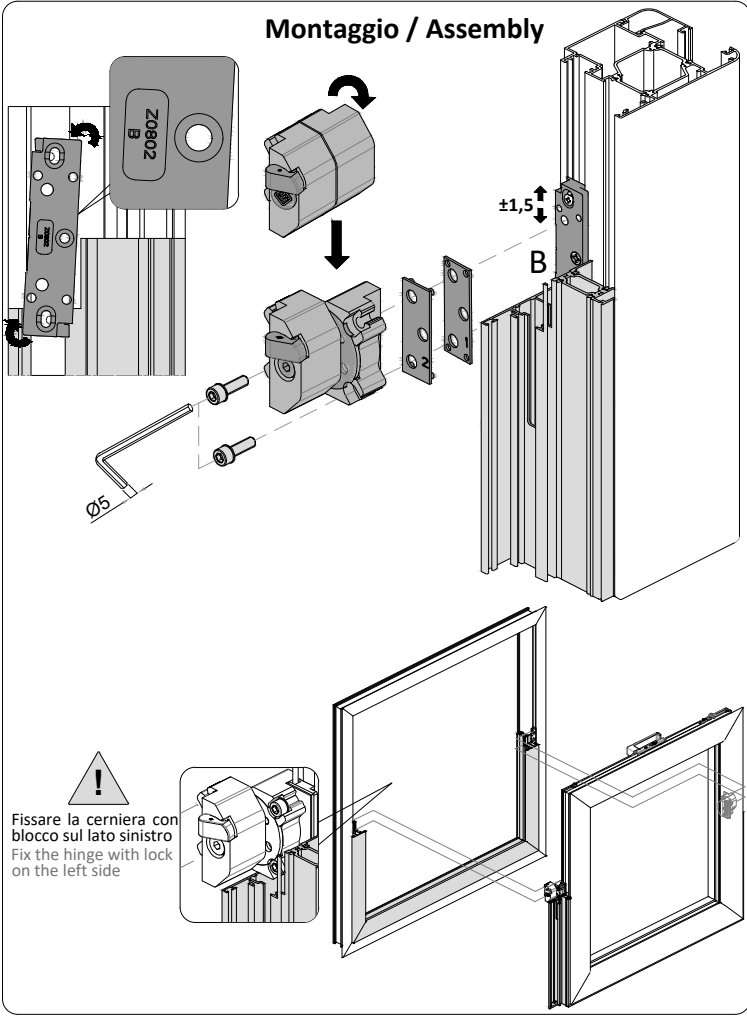
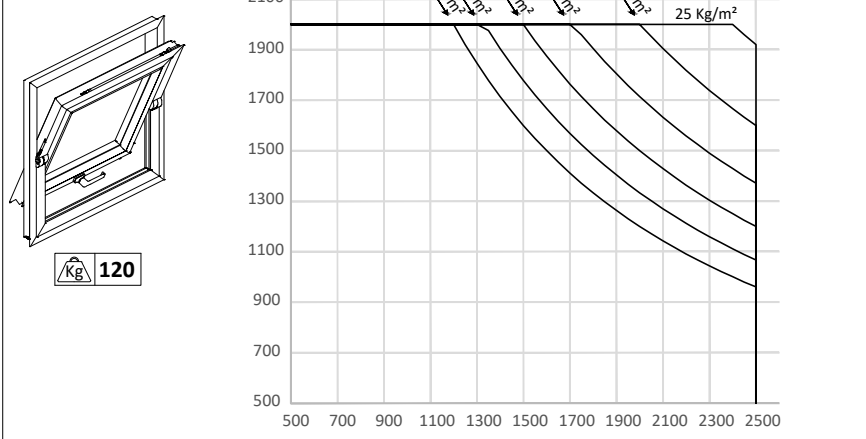
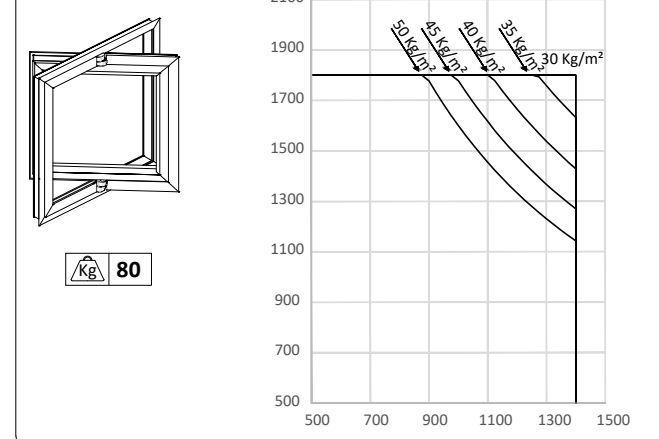


Diagramma di carico - Application range

Horizontal

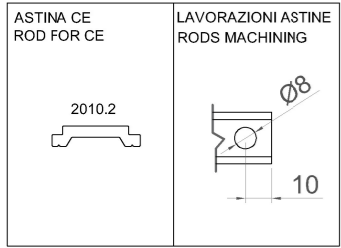
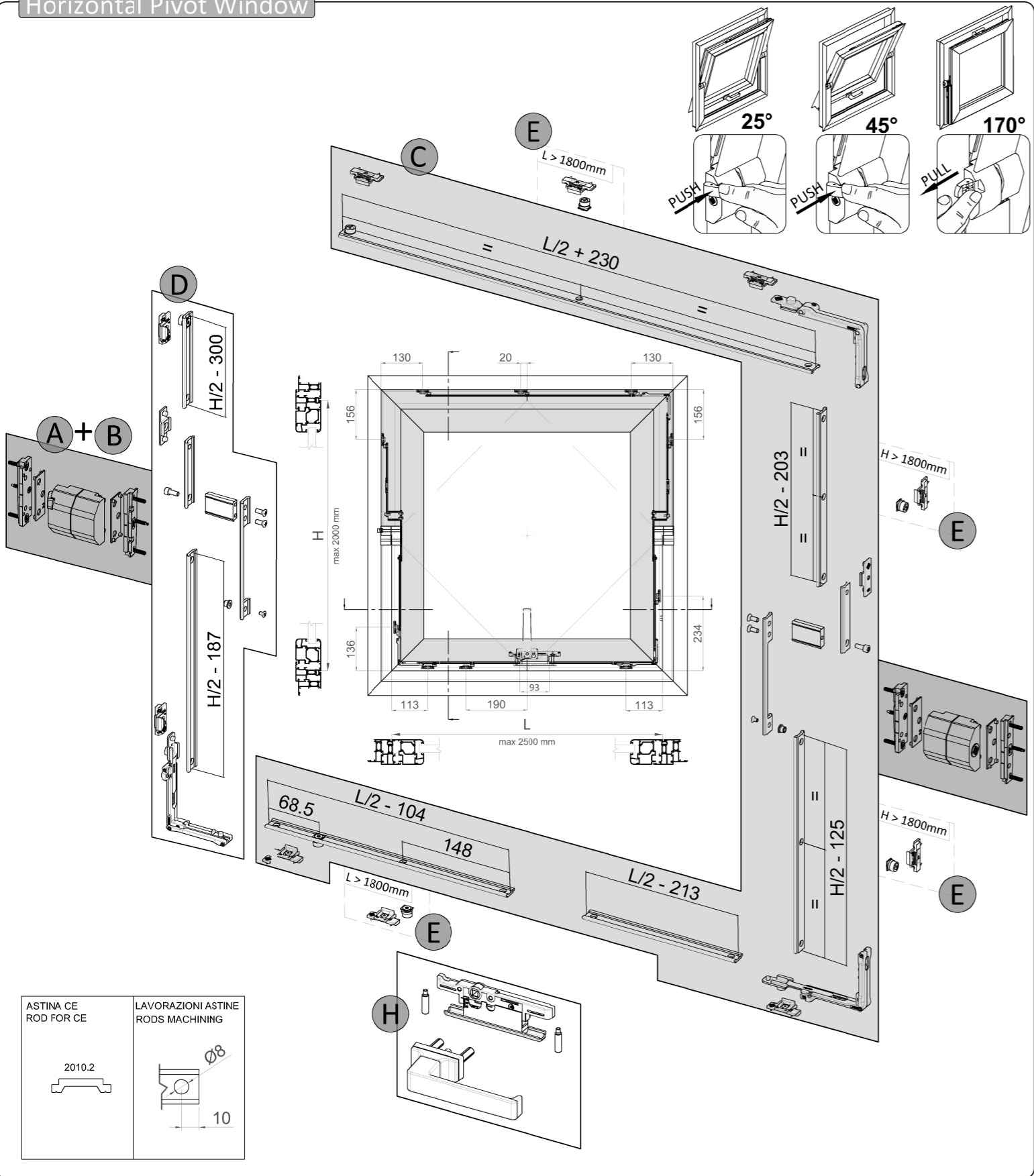


Vertical



ESTRUSORE EXTRUDER	SERIE PROFILES MATCHING	SPESSORE 1 THICKNESS 1	SPESSORE 2 THICKNESS 2	KIT BASE BASIC KIT	KIT SUPPLEMENTARE SUPPLEMENTARY KIT
ALL.CO	EXPORT 50T - 45 - 45TT - 50 - 50TT - 51TT - 68TT			A3710.10	A3710.20
ALL.CO	ALL.COTEC 72	■	■	A3710.12	A3710.22
ALSISTEM	PLANET 45 - 50 - 62 - 72 PLUS		■	A3710.10	A3710.20
ALU-K	50 - 63 IW		■	A3710.10	A3710.20
COLMA	MA 68TT - 72HP - 77HTI		■	A3710.10	A3710.20
DFV	ECOWIN TH 62 - 72		■	A3710.10	A3710.20
HYDRO	DOMAL TB 65 - 75		■	A3710.12	A3710.22
HYDRO	DOMAL BREAK 52 - 63 - PA70 - PA70S		■	A3710.10	A3710.20
HYDRO	DOMAL BRIGHT PA 70S	■	■	A3710.12	A3710.22
ETA	ROAD 520TT - 600TT - START 410 - 560TT		■	A3710.10	A3710.20
IBLEA COLOR GROUP	VUERRE 53 TT		■	A3710.10	A3710.20
IBLEA COLOR GROUP	VUERRE 56TT	■	■	A3710.10	A3710.20
INDINVEST	GOLD 400 - 450 - 500 - DOGMA		■	A3710.10	A3710.20
INDINVEST	PLATHINA 69 - 75		■	A3710.12	A3710.22
PONZIO	WS 45 - 45TT - 55TT - 65TH		■	A3710.10	A3710.20
PROFILATI	EKU 40 - 45 - 53 - 62TT - 66TT HP - 78TT		■	A3710.10	A3710.20
TOMA	TIERRE 450TH - 550TH - 590TH - 600TH - 640TH		■	A3710.12	A3710.22
TWIN SYSTEMS	CX450 - 550 - 600 - 650 - 700 - 850		■	A3710.10	A3710.20
AYUSO	ENERGY PIVOT		■	A3710.13	A3710.23

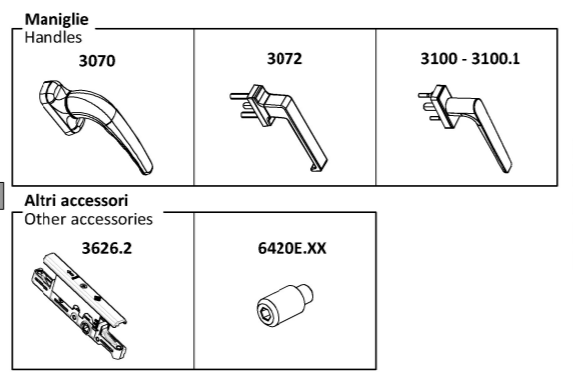
Horizontal Pivot Window



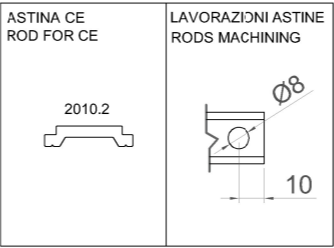
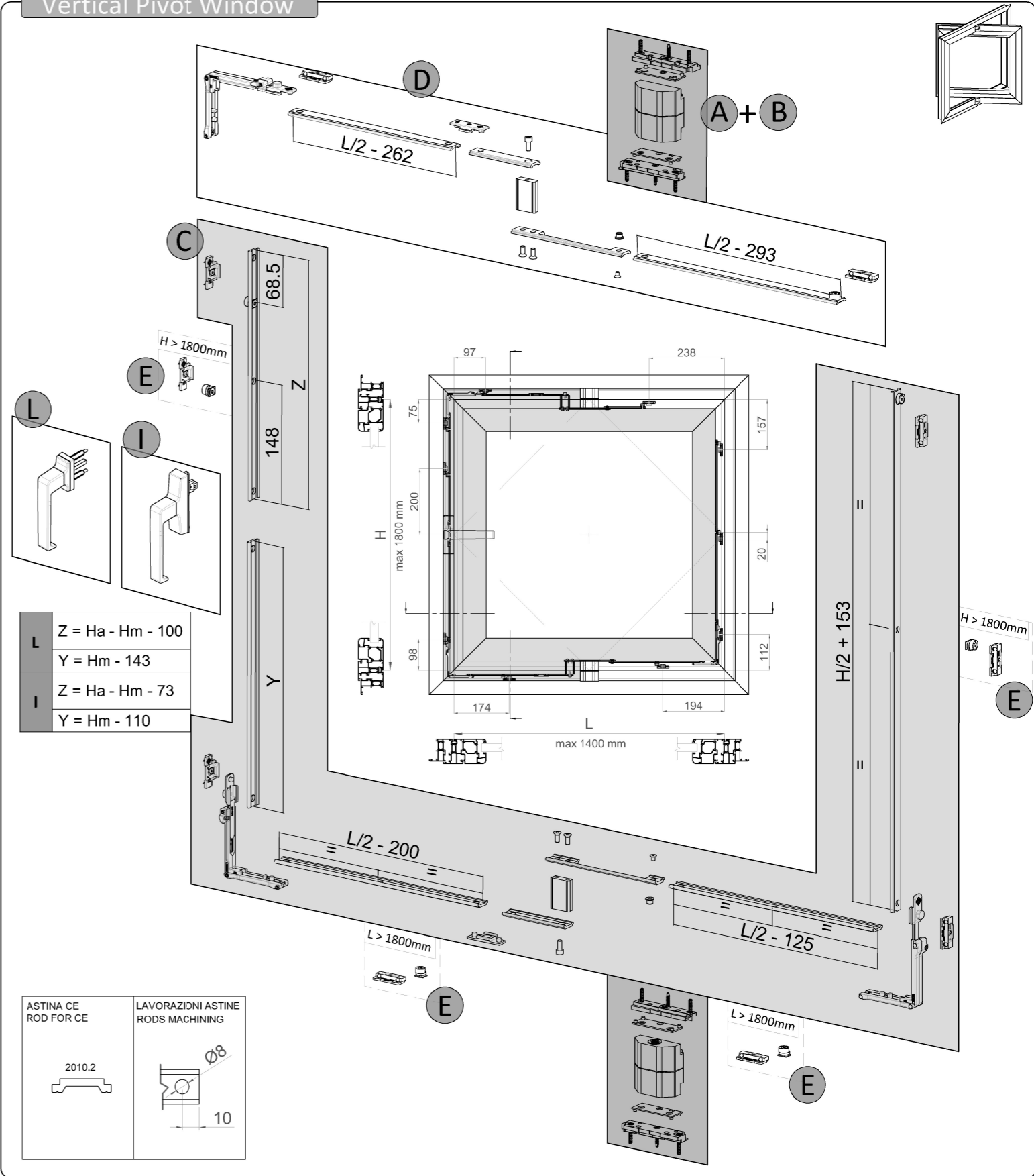
Distinta accessori / Accessories list

A	3700	1 cp	A	3700	1 cp
B	3710 / 3710.1	1 pz	B	3710 / 3710.1	1 pz
C	3710.10/11/12/13	1 pz	C	3710.10/11/12/13	1 pz
D	3710.20/21/22/23	1 pz	D	3710.20/21/22/13	1 pz
E	4207.11 + 4246	2 pz	E	4207.11 - 4246	4 pz

A	3700	1 cp	A	3700	1 cp
B	3710 / 3710.1	1 pz	B	3710 / 3710.1	1 pz
C	3710.10/11/12/13	1 pz	C	3710.10/11/12/13	1 pz
D	3710.20/21/22/23	1 pz	D	3710.20/21/22/23	1 pz



Vertical Pivot Window



Distinta accessori / Accessories list

A	3700.10	1 cp	A	3700.10	1 cp
B	3710 / 3710.1	1 pz	B	3710 / 3710.1	1 pz
C	3710.10/11/12/13	1 pz	C	3710.10/11/12/13	1 pz
D	3710.20/21/22/23	1 pz	D	3710.20/21/22/23	1 pz
E	4207.11 + 4246	2 pz	E	4207.11 + 4246	4 pz

A	3700.10	1 cp	A	3700.10	1 cp
B	3710 / 3710.1	1 pz	B	3710 / 3710.1	1 pz
C	3710.10/11/12	1 pz	C	3710.10/11/12/13	1 pz
D	3710.20/21/22/23	1 pz	D	3710.20/21/22/23	1 pz

