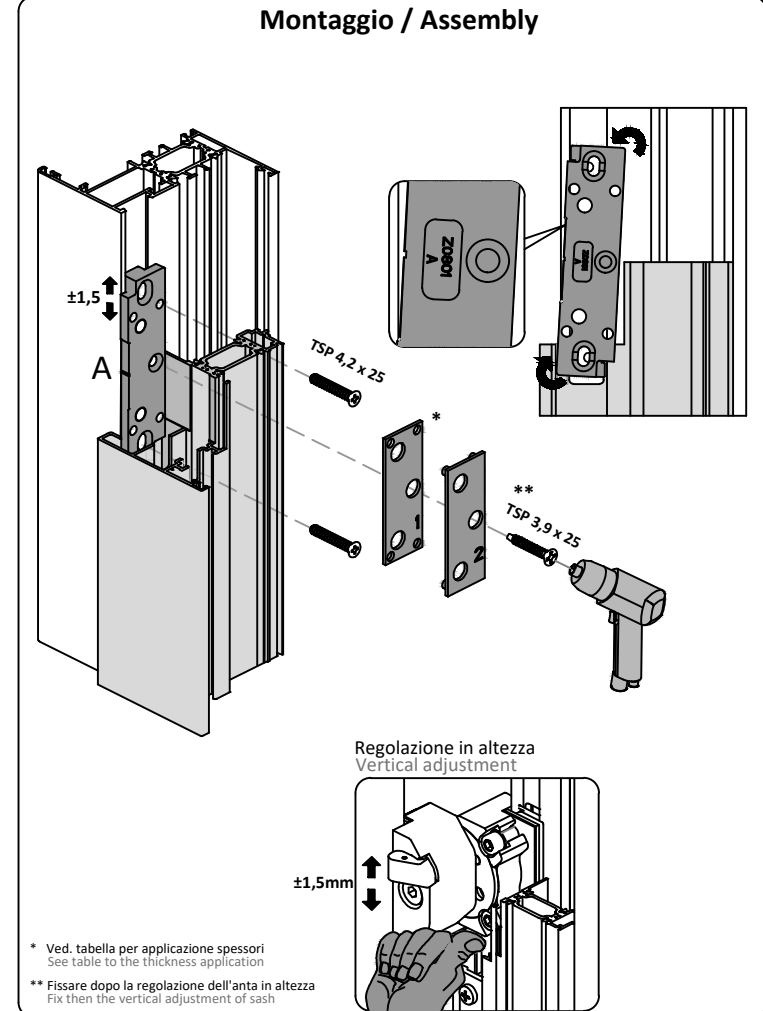
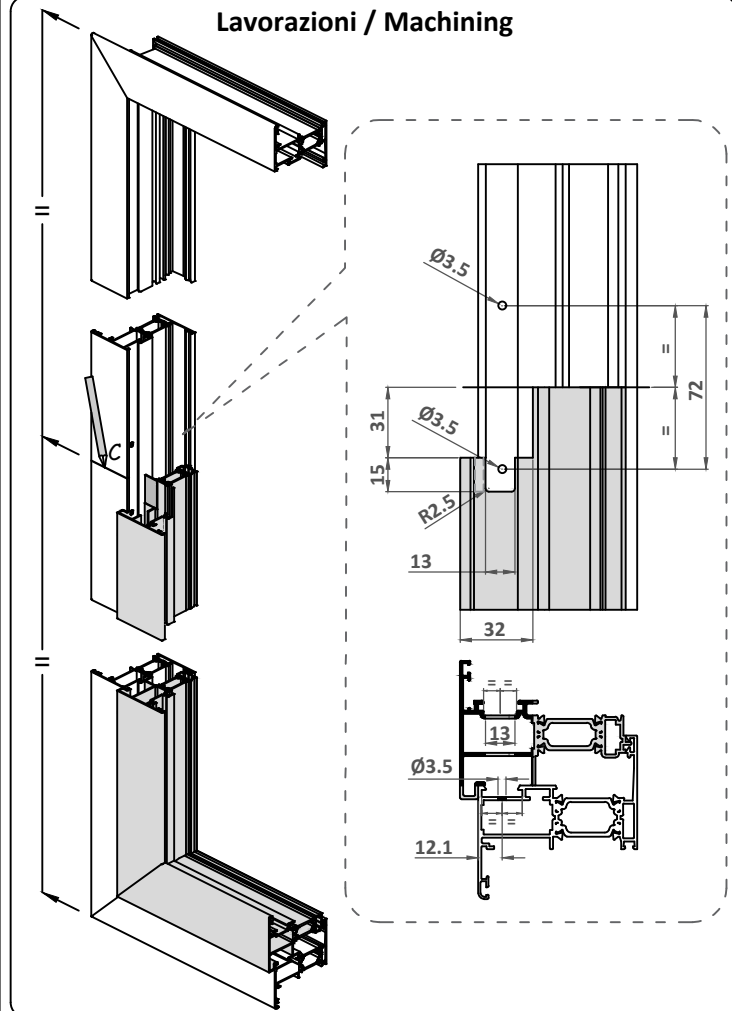


**Telaio - Frame**



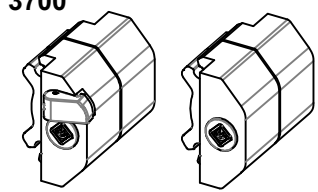
SCHEDA TECNICA DI MONTAGGIO

**EasyPivot**

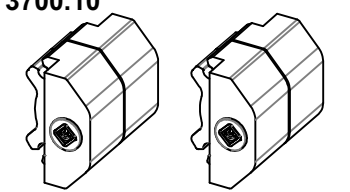
<http://www.masteritaly.com>

CERNIERA A FRIZIONE PER FINESTRE BILICO ORIZZONTALI E VERTICALI  
FRICTION HINGE FOR HORIZONTAL AND VERTICAL PIVOT WINDOWS  
Per Camera Europea - For CE groove

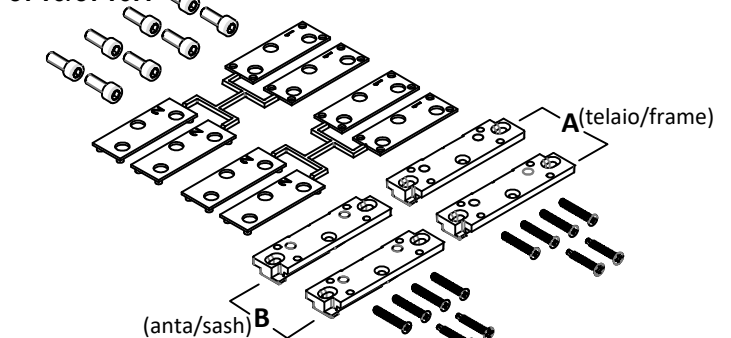
**Kit cerniere orizzontale con blocco**  
Hinges kit to horizontal with lock



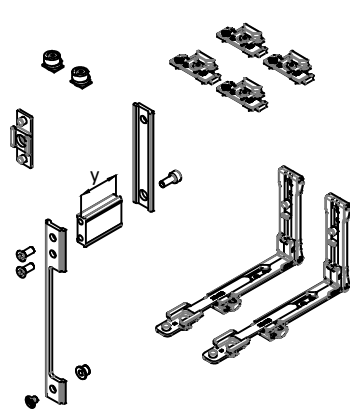
**Kit cerniere verticale senza blocco**  
Hinges kit to vertical without lock



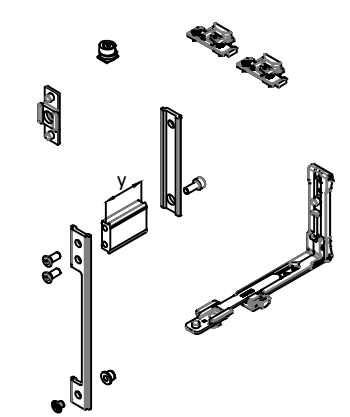
**Kit fissaggio cerniere**  
Hinges fixing kit



**Kit chiusura perimetrale**  
Multi-point locking kit  
**3710.11 / 3710.12 / 3710.13**

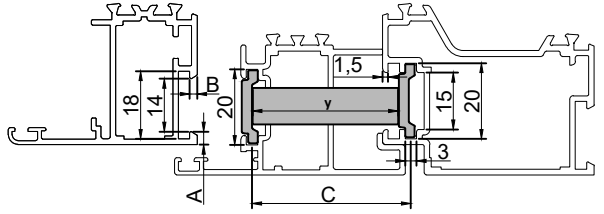


**Kit chiusura supplementare**  
Additional multi-point locking kit  
**3710.21 / 3710.22 / 3710.23**



Riferimento nodo Camera Europea  
Euro groove section referiment

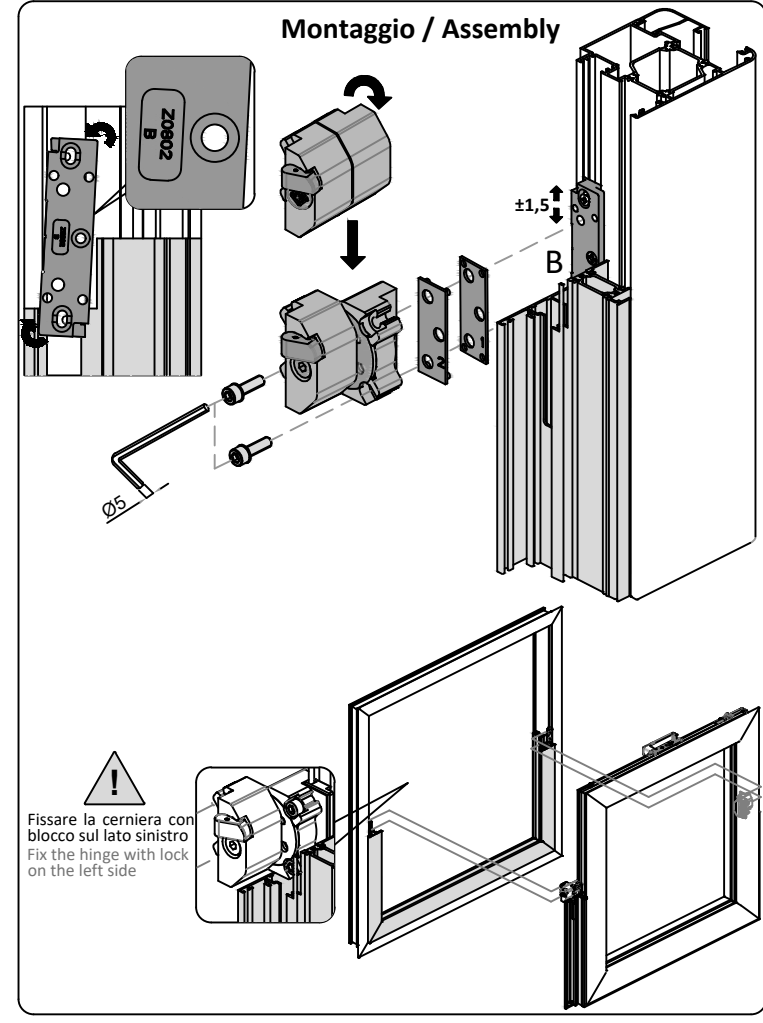
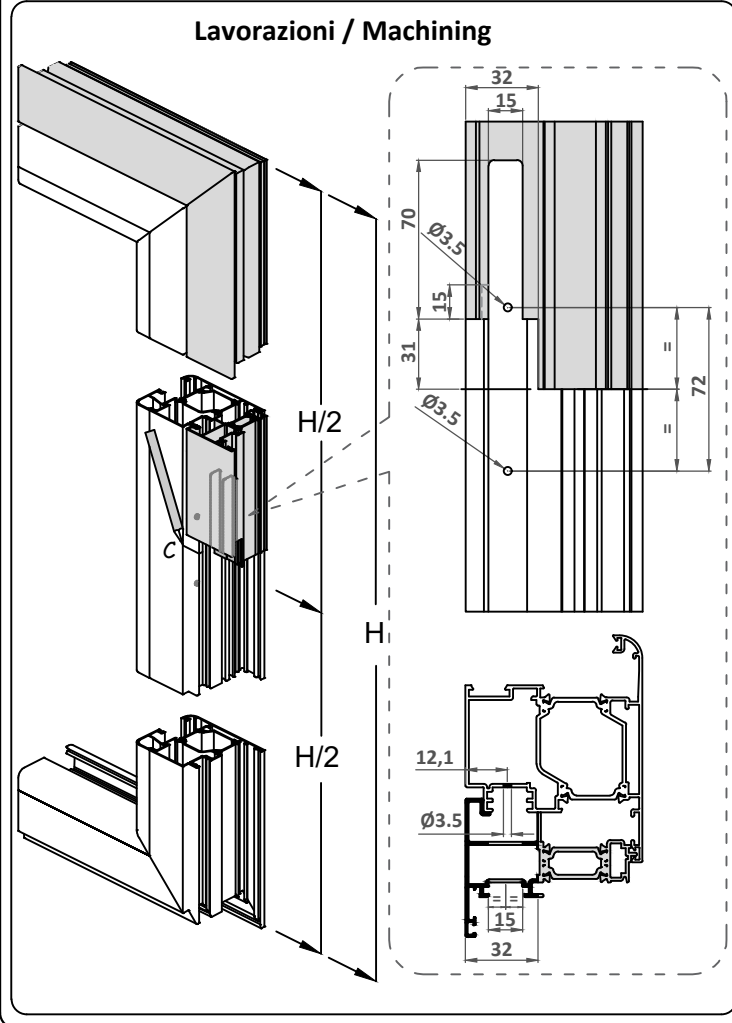
A	B	C	y	Kit chiusure
3.5	2	38 - 41	35.5	3710.11 - 3710.21
4	1.5 - 1.8 - 2	41.5 - 43	38.5	3710.10 - 3710.20
		43.5 - 46.5	41.5	3710.12 - 3710.22
		47 - 50	45.5	3710.13 - 3710.23



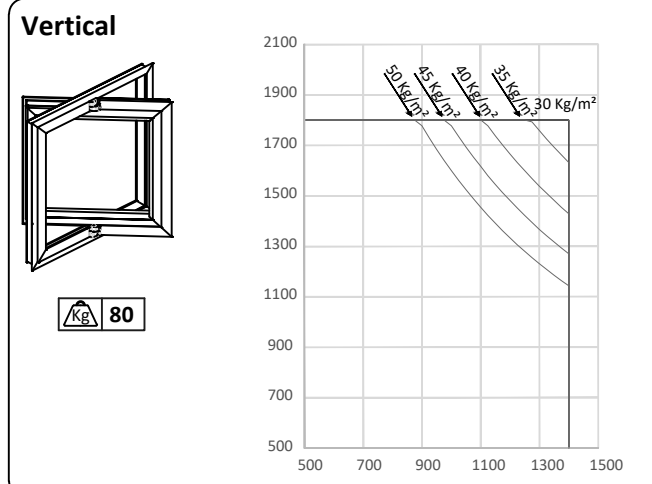
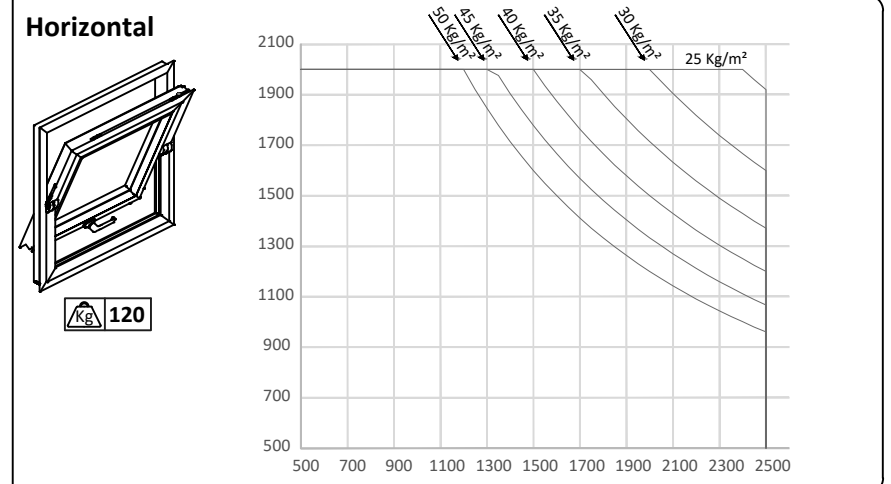
Norma di riferimento Europea UNI EN 13126-1:2006 / 13126-9:2006  
Certified according to European Standard UNI EN 13126-1:2006 / 13126-9:2006

Hor.	5	120	0	1	4	-	9/1	1400x1400
Ver.	5	80	0	1	4	-	9/3	1400x1400
Categoria d'uso	Durabilità	Massa	Resistenza fuoco	Sicurezza di utilizzo	Resistenza alla corrosione	Resistenza effrazione	Applicazione	Dimensione di prova
Category of use	Durability	Mass	Fire resistance	Safety in use	Corrosion resistance	Security	Applicable part	Test size

**Anta - Sash**

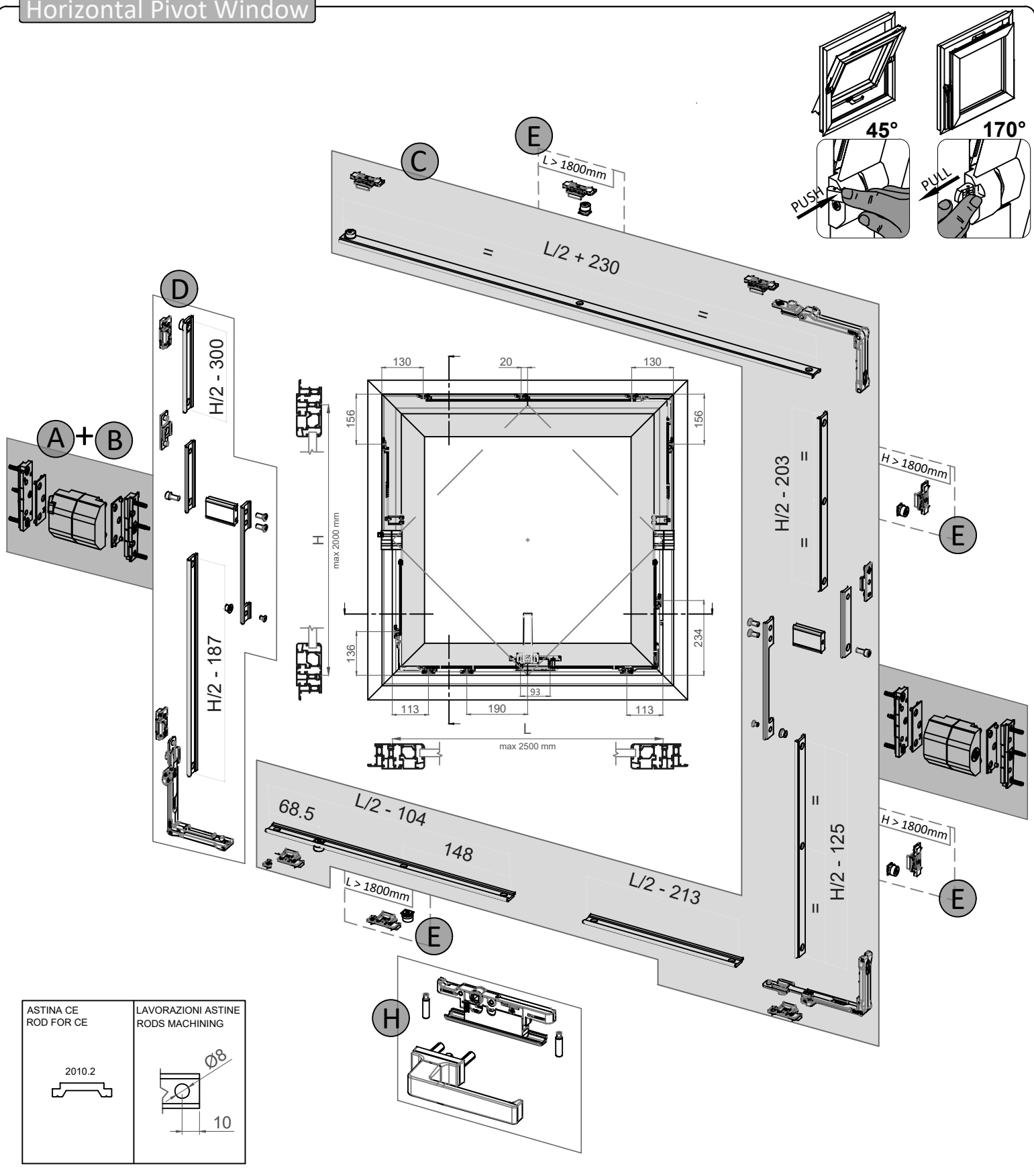


**Diagramma di carico - Application range**



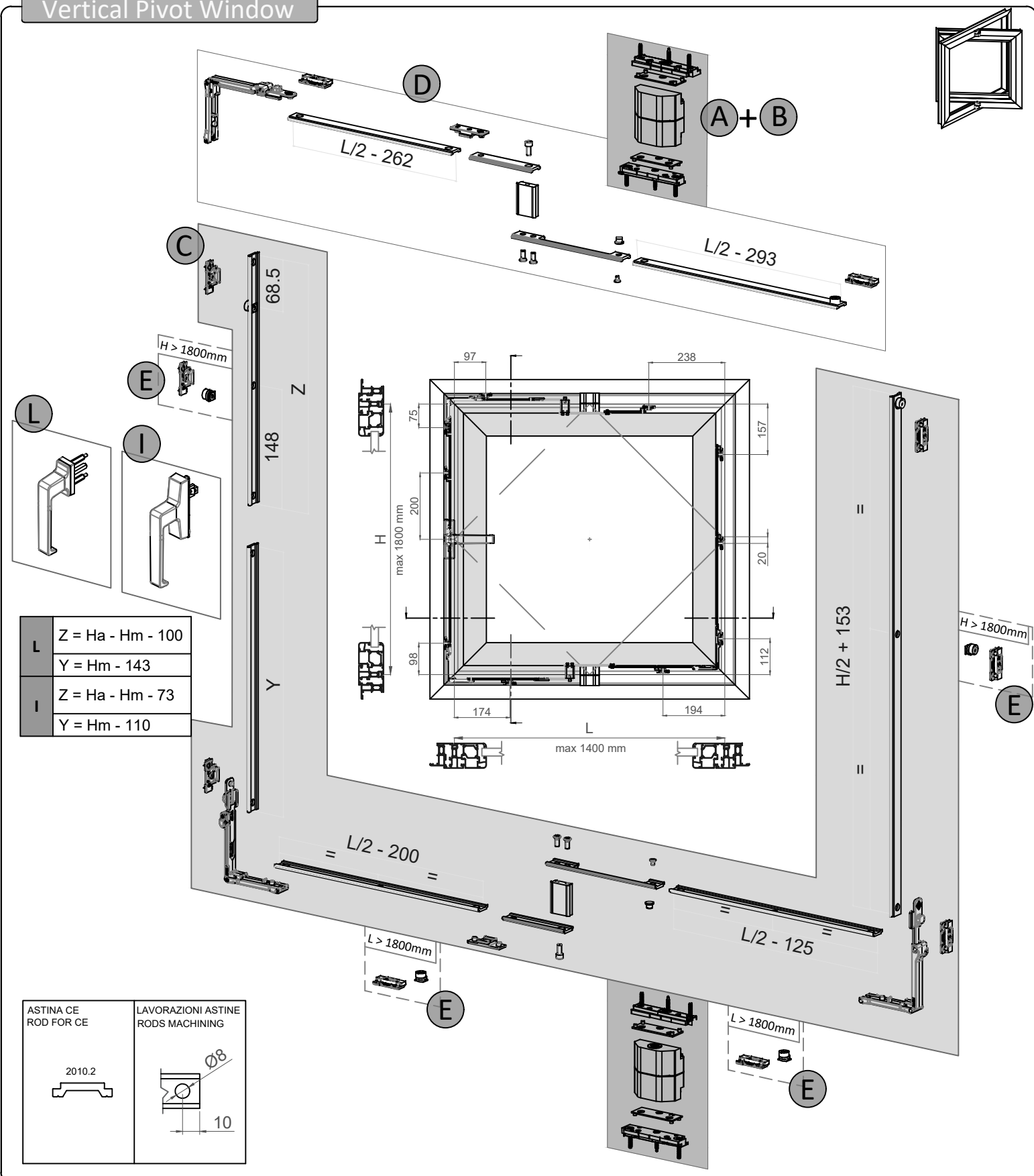
ESTRUSORE EXTRUDER	SERIE PROFILES MATCHING	SPESSORE 1 THICKNESS 1	SPESSORE 2 THICKNESS 2	KIT BASE BASIC KIT	KIT SUPPLEMENTARE SUPPLEMENTARY KIT
ALL.CO	EXPORT 50T - 45 - 45TT - 50 - 50TT - 51TT - 68TT			A3710.10	A3710.20
ALL.CO	ALL.COTEC 72	■	■	A3710.12	A3710.22
ALSISTEM	PLANET 45 - 50 - 62 - 72 PLUS		■	A3710.10	A3710.20
ALU-K	50 - 63 IW		■	A3710.10	A3710.20
COLMA	MA 68TT - 72HP - 77HTI		■	A3710.10	A3710.20
DFV	ECOWIN TH 62 - 72		■	A3710.10	A3710.20
HYDRO	DOMAL TB 65 - 75		■	A3710.12	A3710.22
HYDRO	DOMAL BREAK 52 - 63 - PA70 - PA70S		■	A3710.10	A3710.20
HYDRO	DOMAL BRIGHT PA 70S		■	A3710.12	A3710.22
ETA	ROAD 520TT - 600TT - START 410 - 560TT		■	A3710.10	A3710.20
IBLEA COLOR GROUP	VUERRE 53 TT		■	A3710.10	A3710.20
IBLEA COLOR GROUP	VUERRE 56TT	■	■	A3710.10	A3710.20
INDINVEST	GOLD 400 - 450 - 500 - DOGMA		■	A3710.10	A3710.20
INDINVEST	PLATHINA 69 - 75		■	A3710.12	A3710.22
PONZIO	WS 45 - 45TT - 55TT - 65TH		■	A3710.10	A3710.20
PROFILATI	EKU 40 - 45 - 53 - 62TT - 66TT HP - 78TT		■	A3710.10	A3710.20
TOMA	TIERRE 450TH - 550TH - 590TH - 600TH - 640TH		■	A3710.12	A3710.22
TWIN SYSTEMS	CX450 - 550 - 600 - 650 - 700 - 850		■	A3710.10	A3710.20
AYUSO	ENERGY PIVOT		■	A3710.13	A3710.23

# Horizontal Pivot Window



ASTINA CE ROD FOR CE	LAVORAZIONI ASTINE RODS MACHINING
2010.2	2010.2
	10

# Vertical Pivot Window



ASTINA CE ROD FOR CE	LAVORAZIONI ASTINE RODS MACHINING
2010.2	2010.2
	10

## Distinta accessori / Accessories list

<b>A</b>	3700	1 cp	<b>A</b>	3700	1 cp
<b>B</b>	3710 / 3710.1	1 pz	<b>B</b>	3710 / 3710.1	1 pz
<b>C</b>	3710.10/11/12/13	1 pz	<b>C</b>	3710.10/11/12/13	1 pz
<b>D</b>	3710.20/21/22/23	1 pz	<b>D</b>	3710.20/21/22/23	1 pz
<b>E</b>	4207.11 + 4246	2 pz	<b>E</b>	4207.11 + 4246	4 pz

<b>A</b>	3700	1 cp	<b>A</b>	3700	1 cp
<b>B</b>	3710 / 3710.1	1 pz	<b>B</b>	3710 / 3710.1	1 pz
<b>C</b>	3710.10/11/12/13	1 pz	<b>C</b>	3710.10/11/12/13	1 pz
<b>D</b>	3710.20/21/22/23	1 pz	<b>D</b>	3710.20/21/22/23	1 pz

**Maniglie**  
Handles

<b>3070</b>	<b>3072</b>	<b>3100 - 3100.1</b>

**F** Altri accessori  
Other accessories

<b>3626.2</b>	<b>6420E.XX</b>

**E** **4207.11 + 4246**

## Distinta accessori / Accessories list

<b>A</b>	3700.10	1 cp	<b>A</b>	3700.10	1 cp
<b>B</b>	3710 / 3710.1	1 pz	<b>B</b>	3710 / 3710.1	1 pz
<b>C</b>	3710.10/11/12/13	1 pz	<b>C</b>	3710.10/11/12/13	1 pz
<b>D</b>	3710.20/21/22/23	1 pz	<b>D</b>	3710.20/21/22/23	1 pz
<b>E</b>	4207.11 + 4246	2 pz	<b>E</b>	4207.11 + 4246	4 pz

<b>A</b>	3700.10	1 cp	<b>A</b>	3700.10	1 cp
<b>B</b>	3710 / 3710.1	1 pz	<b>B</b>	3710 / 3710.1	1 pz
<b>C</b>	3710.10/11/12	1 pz	<b>C</b>	3710.10/11/12/13	1 pz
<b>D</b>	3710.20/21/22/23	1 pz	<b>D</b>	3710.20/21/22/23	1 pz

**Maniglie**  
Handles

<b>3070</b>	<b>3072</b>	<b>3100 - 3100.1</b>	<b>Altri accessori</b> Other accessories
			<b>3627 - 3627.2</b>
<b>L</b>	<b>6015 - 6011.10</b>	<b>6061</b>	<b>6018</b>
<b>I</b>	<b>6111.15</b>		

**E** **4207.11 + 4246**