



3420.24

160kg

3400.50

14.9

3.3

Ø3.5

⚠

① OBBLIGATORIO PER PESI > 100kg

② MANDATORY FOR WEIGHT > 100kg

③ OBLIGATOIRE POUR LES POIDS > 100 kg

④ OBLIGATORIO DE PESO > 100kg

①

Utensili utilizzati ALLEN n°3

Tools used

Coppia / Torque MAX 3.5Nm

3400.24

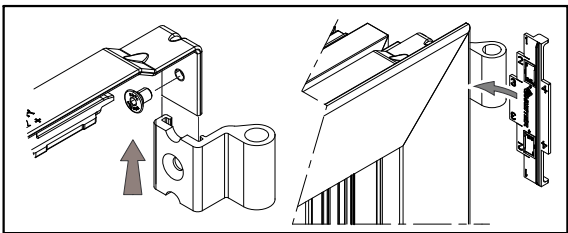
100kg

①

Utensili utilizzati ALLEN n°3

Tools used

Coppia / Torque MAX 3.5Nm



**\* Perno microventilazione integrata**  
**Da abbinare a 3400.39**

*Built-in microventilation pin*  
*In combination with 3400.39*

⚠

PER L>500 E APERTURA IMPEDITA A 180°

BRACCIO LIMITATORE CONSIGLIATO

IT IS RECOMMENDED TO USE A LIMITER ARM

FOR WINDOWS WIDTH >500 AND FOR WINDOWS WITH 180° RESTRICTED OPENING

10"

1203A.10

>390mm <1701mm

Telato - Frame

Anta - Sash

255

MANOVRA LOGICA - TBT

3550L.30 + 3400L.22

L - 692

ANTA RIBALTA - T&T

3550.30 + 3400.22

L-965

1200 mm < L ≤ 1700 mm

\* 3400.22 3400L.22

L - 543

651 mm < L ≤ 1200 mm

\* 3400.21 3400L.21

L - 356

451 mm < L ≤ 650 mm

3400.20 3400L.20

L - 340

370 mm < L ≤ 450 mm

Z

Hm

Y

L

30

15

83

100

105

15

3400F.1 / 3420F.1 / 3420F.158 / 3400F.401 / 3420F.401 / 3420F.150 / 3400F.151 / 3420F.151 / 3400L.F.1 / 3420L.F.1

Z - 166

Y - 132

Z - 246

3400F.32

3627 / 3627.2

Y - 163

(a)

(b)

Z-249

3400F.32

3630 / 3630.20

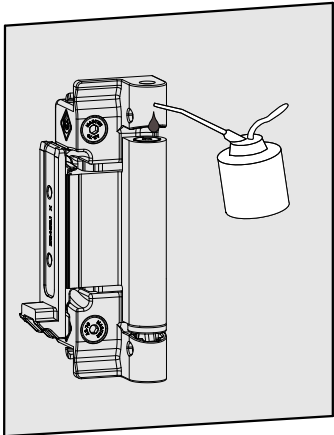
Y - 166

(c)

3400.24

3420.24

LOGICA DOPPIA ANTA TBT DOUBLE SASH	
(a)	Y - 140
(b)	Y - 171
(c)	Y - 174



H/2 - 166

H > 1400 mm

3420F.31

H/2 - 400

3420F.31

L/2 - 132

+

3400.35

L > 1200 mm

H > 2200 mm

3400F.32