



HARDWARE FOR WINDOWS AND DOORS

<http://www.masteritaly.com>



Karma Martelline Minimali Universali

<http://www.masteritaly.com>

SCHEDA TECNICA DI MONTAGGIO

ART.	DESCRIZIONE	Y
A3091.A	Martellina Handle	26mm
A3091.1A		32mm
A3091.2A		38mm
A3091.AS	Martellina SX Handle SX	26mm
A3091.1AS		32mm
A3091.2AS		38mm
A3091.AD	Martellina DX Handle DX	26mm
A3091.1AD		32mm
A3091.2AD		38mm
A3091.60	Martellina ovale Oval handle	26mm
A3091.61		32mm
A3091.62		38mm
A3091.40	Martellina chiave a cifratura mista Handle with mixed encryption key	26mm
A3091.40K		26mm
A3091.41K		32mm
A3091.42K		38mm

ARTICOLO	B
A3627.xx	54mm
A3628.xx	60mm
A3630.xx	60mm
A3631.xx	60mm

CE apertura interna

ART.	X	Y
A3630.60	8-10mm	26mm

R40 apertura interna

ART.	X	Y
A3630.61	8mm	26mm

A3630.6x

Chlave TORX10
Coppia Max 1,5 Nm

A3627.xx/A3628.xx

L'esperto Consiglia:

* Per x diverse o per apertura esterna contattare il nostro Uff. Tecnico tel. 080.4959823

Cava 16

ASSE 9	Y	X	ASSE 13	Y
A3630.70	26mm	7-9mm	A3630.72	26mm
A3630.71		9-11mm	A3630.73	
A3630.72		11-13mm	A3630.74	
A3630.73	32mm	13-15mm	A3630.75	32mm
A3630.74		15-17mm	A3630.76	
A3630.75		17-19mm	A3630.77	
A3630.76		19-21mm	A3630.78	

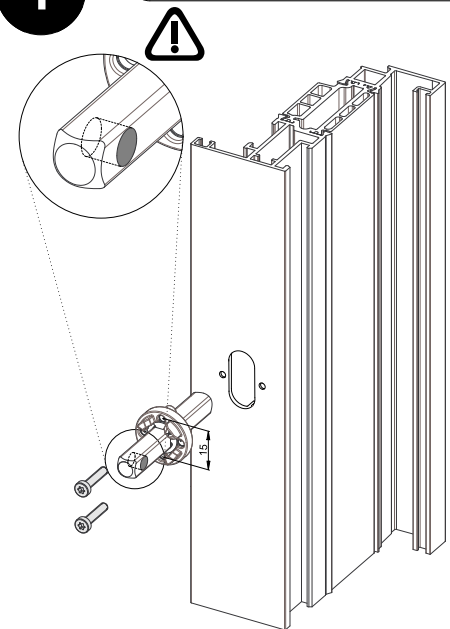
Scorrevole

ART.	A	Y
A3630.70	32-36mm	26mm
A3630.71	36-40mm	
A3630.72	40-44mm	
A3630.73	44-48mm	
A3630.74	48-52mm	26mm

ART.	A	Y
A3630.60	32-36mm	26mm
A3630.62	36-40mm	
A3630.61	40-44mm	
A3630.63	44-48mm	
A3630.64	48-52mm	26mm

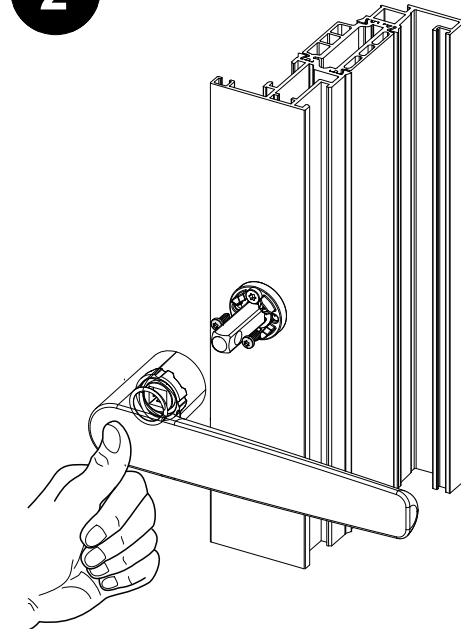
1

Posizionare sede grano lato apertura maniglia
Place socket set screw on the handle opening side



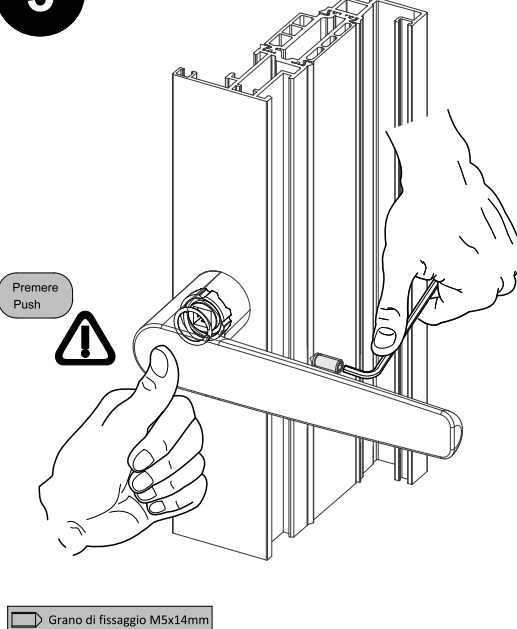
Per Viti di fissaggio
Chiave TORX T10

2



Per Viti di fissaggio
Chiave TORX T10

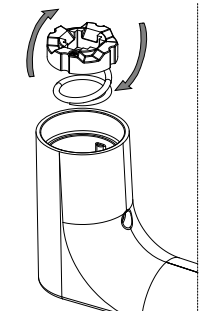
3



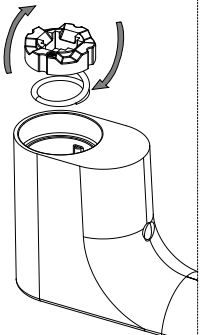
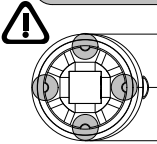
Grano di fissaggio M5x14mm

Per Grano di fissaggio
Chiave ALLEN esagonale n°2.5

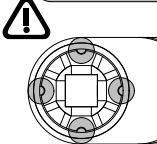
Grezzo
Mill finish



Verificare il corretto posizionamento
Check the correct positioning

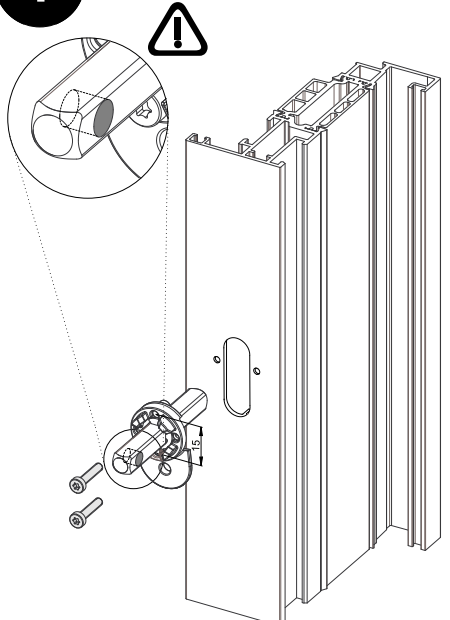


Verificare il corretto posizionamento
Check the correct positioning



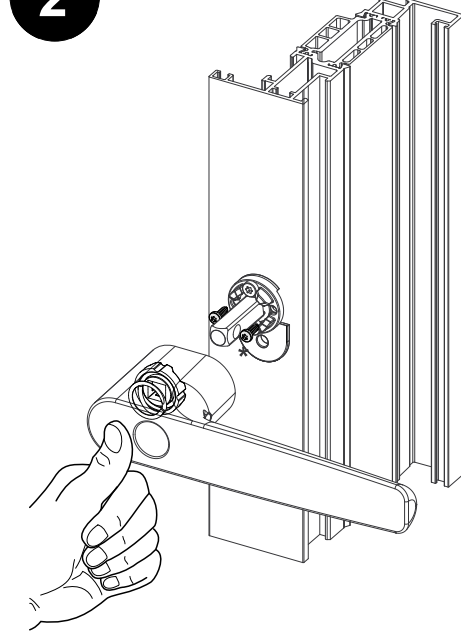
1

Posizionare sede grano lato apertura maniglia
Place socket set screw on the handle opening side



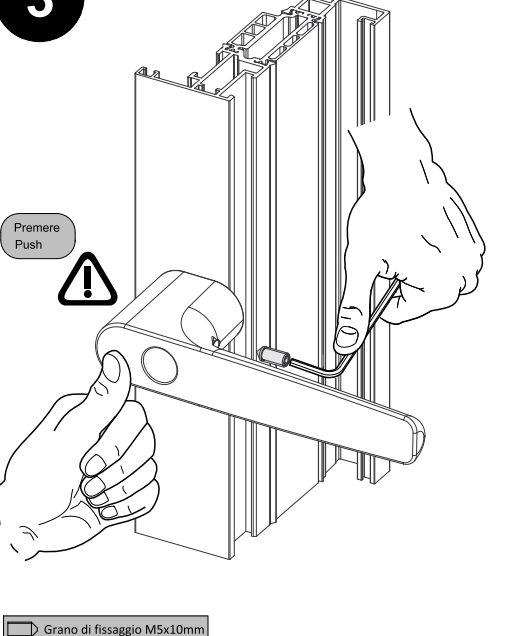
Per Viti di fissaggio
Chiave TORX T10

2



Per Viti di fissaggio
Chiave TORX T10

3

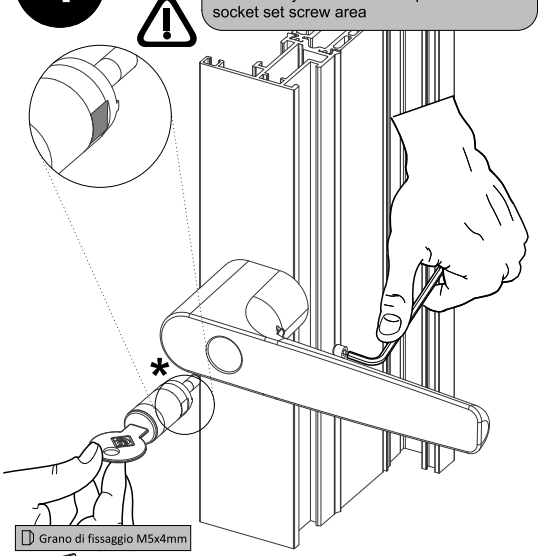


Grano di fissaggio M5x10mm

Per Grano di fissaggio
Chiave ALLEN esagonale n°2.5

4

Posizionare il cilindro con la zona squadrata
in corrispondenza del grano di fissaggio
Place the cylinder with the square area
in the socket set screw area



Grano di fissaggio M5x4mm

Per Grano di fissaggio
Chiave ALLEN esagonale n°2.5
Coppia massima di serraggio di 3Nm
Maximum tightening torque of 3Nm

* Verificare che la serratura sia aperta (13,5mm)
Check that the lock is open (13.5mm)

