

130Kg - 180°

Obbligatorio 3310.51 con soglie ribassate
Mandatory 3310.51 with low threshold

Consigliato 3310.51 per portate >80Kg e altezze >2100 mm
Recommended 3310.51 with weights >80Kg and height >2100 mm

2500	35	33	28	24	21	18	17	15	14	16	15	14	
2400	37	35	29	25	22	19	17	16	14	17	15	14	
2300	38	36	30	26	23	20	18	16	19	17	16	15	
2200	40	38	32	27	24	21	19	17	20	18	17	16	
2100	42	40	33	28	25	22	20	23	21	19	18	17	
2000	44	42	35	30	26	23	21	24	22	20	19	17	
1900	47	44	36	31	27	24	22	25	23	21	20	18	
1800	49	46	39	33	29	26	24	26	24	22	21	19	
1700	50	49	41	35	31	28	25	27	25	23	22	20	
1600	50	50	43	37	33	30	27	28	26	24	23	21	
1500	50	50	46	40	36	33	30	29	27	25	24	22	
1400	50	50	50	46	41	37	34	31	29	27	25	23	
1300	50	50	50	50	44	40	36	33	31	29	27	25	
1200	50	50	50	50	48	43	39	36	33	31	29	27	
1100	50	50	50	50	50	47	43	39	36	33	31	29	
1000	50	50	50	50	50	50	47	43	39	36	33	31	
900	50	50	50	50	50	50	50	47	29	18	X	X	
800	50	50	50	50	50	50	50	35	X	X	X	X	
700	50	50	50	50	50	50	50	30	X	X	X	X	
600	50	50	50	50	50	X	X	X	X	X	X	X	
550	50	50	50	50	18	X	X	X	X	X	X	X	
H	L	470	500	600	700	800	900	1000	1100	1200	1300	1400	1500

150Kg - 180°

Obbligatorio 3310.51
Mandatory 3310.51

Max 150 Kg
Min 60 Kg

2700	38	36	30	25	22	20	18	16	15	14	16	15	
2600	39	37	31	26	23	21	18	17	15	14	16	15	
2500	41	38	32	27	24	21	19	17	16	18	17	16	
2400	43	40	33	29	25	22	20	18	17	19	18	17	
2300	44	42	35	30	26	23	21	19	22	20	19	17	
2200	46	44	36	31	27	24	22	20	23	21	19	18	
2100	49	46	38	33	29	25	23	26	24	22	20	19	
2000	50	48	40	34	30	27	24	27	25	23	21	20	
1900	50	50	42	36	32	28	25	29	26	24	23	21	
1800	50	50	44	38	33	30	28	30	28	26	24	22	
1700	50	50	47	40	35	32	29	31	29	27	25	24	
1600	50	50	50	43	38	34	31	32	30	28	27	25	
1500	50	50	50	46	40	36	33	33	31	29	27	25	
1400	50	50	50	49	43	39	36	33	31	29	27	25	
1300	50	50	50	50	46	42	38	36	33	31	29	27	
1200	50	50	50	50	50	45	42	38	32	30	28	26	
1100	50	50	50	50	50	50	45	38	35	33	31	29	
1000	50	50	50	50	50	50	50	45	42	26	X	X	
900	50	50	50	50	50	50	50	50	33	21	X	X	
800	50	50	50	50	50	50	41	X	X	X	X	X	
700	50	50	50	50	50	34	X	X	X	X	X	X	
600	50	50	50	50	50	X	X	X	X	X	X	X	
550	50	50	50	50	18	X	X	X	X	X	X	X	
H	L	470	500	600	700	800	900	1000	1100	1200	1300	1400	1500

Kit anta ribalta a scomparsa
Hidden kit for tilt and turn

Per sistemi Camera Europea
For Euro Groove system

ITA
Scansiona il QR Code e guarda il video montaggio

Riferimento nodo Camera Europea
Euro groove section referment

	3304A	3303A
	A01	A03
A	14	13.5
B	4	3
C	18	16.8

180Kg - 90°

Obbligatorio 3310.50
Mandatory 3310.50

Max 180 Kg
Min 60 Kg

3000	41	38	32	27	24	21	19	17	18	
2900	42	40	33	28	25	22	20	18	19	
2800	44	41	34	29	26	23	21	21	19	
2700	45	43	36	30	27	24	21	22	20	
2600	47	44	37	32	28	25	22	23	21	
2500	49	46	38	33	29	26	24	24	22	
2400	50	48	40	34	30	27	25	25	23	
2300	50	50	42	36	31	28	26	26	23	
2200	50	50	44	37	33	33	29	27	25	
2100	50	50	46	39	34	34	31	28	26	
2000	50	50	48	41	41	36	32	29	27	
1900	50	50	50	43	43	38	34	31	28	
1800	50	50	50	46	45	40	36	33	30	
1700	50	50	50	48	42	38	35	32	32	
1600	50	50	50	50	45	41	37	34	34	
1500	50	50	50	50	50	48	43	39	36	
1400	50	50	50	50	50	46	42	39	36	
1300	50	50	50	50	50	50	45	42	39	
1200	50	50	50	50	50	50	50	49	45	
1100	50	50	50	50	50	50	50	50	49	
1000	50	50	50	50	50	50	50	50	50	
900	50	50	50	50	50	50	50	50	40	
800	50	50	50	50	50	50	50	49	X	
700	50	50	50	50	50	50	41	X	X	
600	50	50	50	50	50	X	X	X	X	
550	50	50	50	50	50	X	X	X	X	
H	L	470	500	600	700	800	900	1000	1100	1200

EN-13126-8:2017	H2	130	5	1550X1400
	H2	150	5	1550X1400
	H1	180	5	900X2300

Es. **20** IT Anta eseguibile con spessore vetro Max 20 mm
EN Sash size executable with Max glass thickness 20 mm

X IT Dimensione non eseguibile
EN Not feasible

Per apertura impedita a 180° è obbligatorio braccio limitatore
For windows with 180° restricted opening mandatory use a limiter arm

1211 (L>570)

LAVORAZIONI / MACHINING

NOTE: nel caso di utilizzo cerniere con interasse 98mm utilizzare l'art. 6015.3
NOTE: in case of cerniere-bolt with inter-axe 98mm use art. 6015.3

LAVORAZIONI ASTINE
RODS MACHINING

Maniglie
Handles

6018	6038 6038.20D/S	6015 - 6015.3 6011 - 6011.10	6036 - 6032.10 - 6036.3 6036.20 6036.23	6061	6063 6063.20
3072	3077.2 3077.25	3070	3070.2 3075.25	3100	3101 3101.25

MASTER S.r.l. - I691C - A3 FR - 21/05/2026

Regolazione | Adjustment

Posizionamento punti chiusura | Positioning locking points | Positionnement points de fermeture | Posicionamiento puntos de cierre

ANTA RIBALTA | TILT AND TURN

3320F.1

AFM •

Ribalta
Tilt

Apertura
Open

Chiusura
Locking

MANOVRA LOGICA TILT BEFORE TURN

3320LF.1

AFM •

Apertura
Open

Ribalta
Tilt

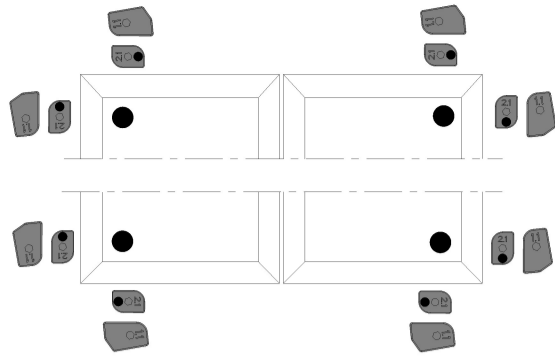
Chiusura
Locking

MONTAGGIO CERNIERE TELAIO
HINGE FRAME ASSEMBLY

Posizione iniziale delle camme
Correct starting cam position

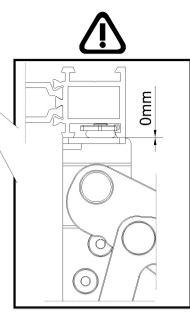
3303

3304

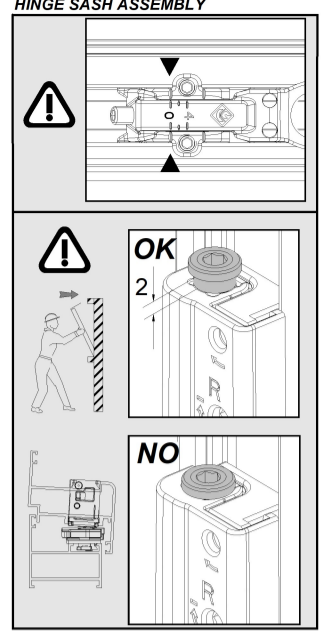


VITE SUPPLEMENTARE
ADDITIONAL SCREW

Allen - 3mm



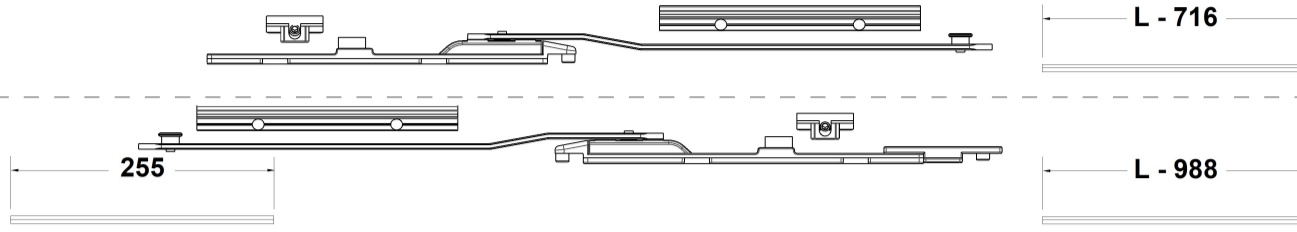
MONTAGGIO CERNIERA ANTA
HINGE SASH ASSEMBLY



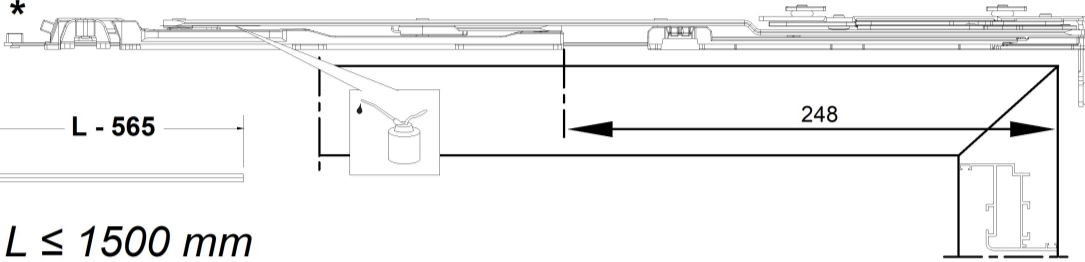
ANTA RIBALTA TILT AND TURN	
COD.	NODO
3520.30	A01 - A05
3400G.30	A03

$1200\text{ mm} < L \leq 1500\text{ mm}$

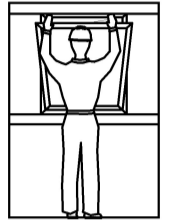
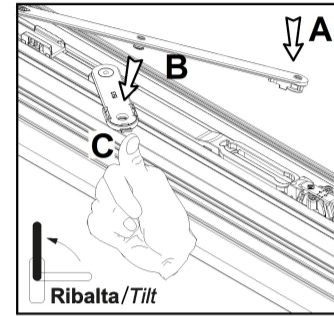
MANOVRA LOGICA TILT BEFORE TURN	
COD.	NODO
3550L.30	A01 - A05
3400LG.30	A03



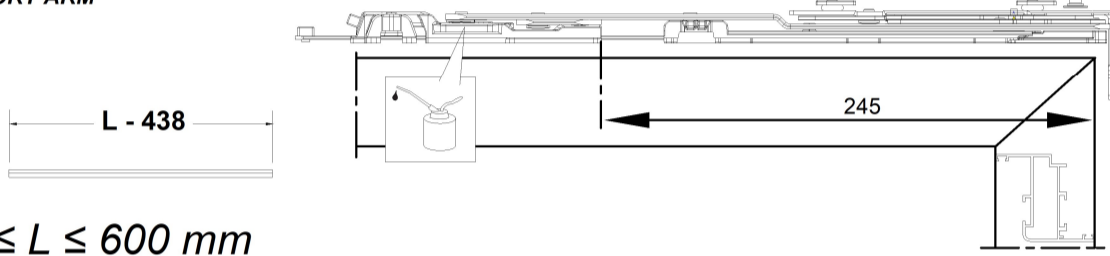
BRACCIO LUNGO STD/LOG
T&T and TBT LONG ARM



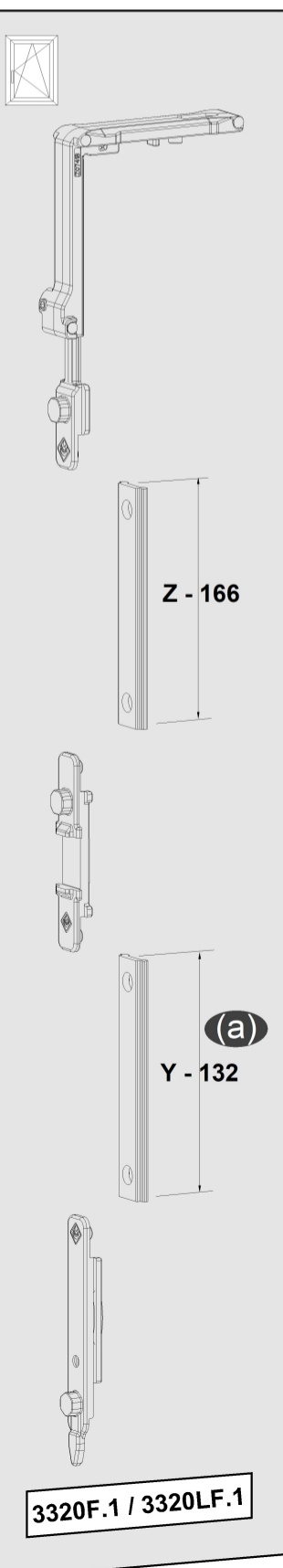
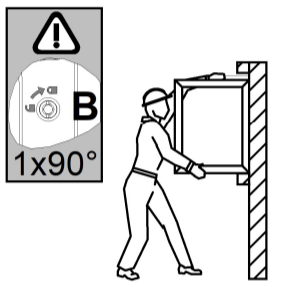
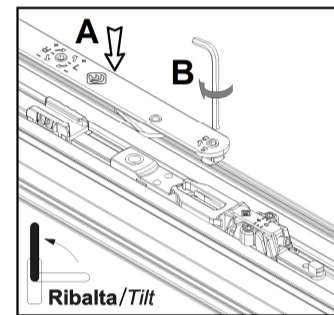
$600\text{ mm} < L \leq 1500\text{ mm}$



BRACCIO CORTO STD/LOG
T&T and TBT SHORT ARM



$470\text{ mm} \leq L \leq 600\text{ mm}$



con / with 3400F.32	Z-246	con / with 3400F.32	Z-249
senza / without 3400F.32	Z-193	senza / without 3400F.32	Z-196

3400F.32

3627 / 3627.2

3630 / 3630.20

**LOGICA
DOPPIA ANTA
DOUBLE SASH
TBT**

(a)	Y - 140
(b)	Y - 171
(c)	Y - 174

Y - 166

H < 1400 mm

COD.	DES.
330XA.10S/D	Kit cerniere brac. corto Kit hinge short arm
330XAL.10S/D	Kit cerniere brac. corto logica Kit hinge short arm logic
330XA.11S/D	Kit cerniere brac. lungo Kit hinge long arm
330XAL.11S/D	Kit cerniere brac. lungo logica Kit hinge long arm logic

H/2 - 166

H > 1400 mm

3420F.31

con / with 3310.50-51	H/2-450
senza / without 3310.50-51	H/2-400

3400.35

3400F.32

H > 2200 mm

L > 1200 mm

Da abbinare a 3520.39
* In combination with 3520.39
L min 670